

Due to a submission error, the article “Unilateral Facial Angiofibromas Without Other Evidence of Tuberous Sclerosis: Case Report and Review of the Literature” (*Cutis*. 2007;80:284-288) featured incorrect histopathologic photographs. Consequently, the correct photographs appear below.

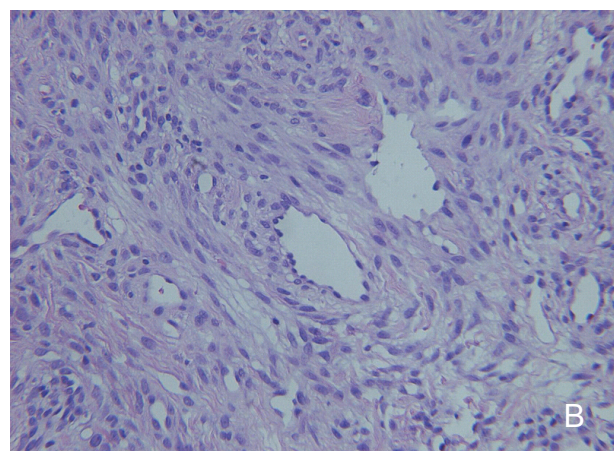
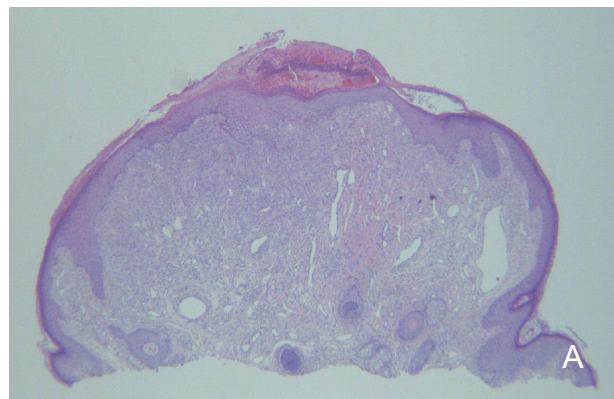


Figure 2. Pedunculated papule with prominent fibrous stroma and ectatic dermal blood vessels (H&E, original magnification $\times 10$)(A). Concentric fibrosis and thin-walled blood vessels (H&E, original magnification $\times 40$)(B).

Cutis[®] makes every possible effort to ensure accuracy in its articles and apologizes for the error.