

THE CLINICAL PICTURE

MOHAMMAD AFZALIMOGHADDAM, MD

Associate Professor of Emergency Medicine, Department of Emergency Medicine, Tehran University of Medical Sciences, Tehran, Iran

MARYAM EDALATIFARD, MD

Assistant Professor of Emergency Medicine, Department of Emergency Medicine, Tehran University of Medical Sciences, Tehran, Iran

SHERVIN FARAHMAND, MD

Associate Professor of Emergency Medicine, Department of Emergency Medicine, Tehran University of Medical Sciences, Tehran, Iran

SHAHRAM BAGHERI-HARIRI, MD

Assistant Professor of Emergency Medicine, Department of Emergency Medicine, Tehran University of Medical Sciences, Tehran, Iran

HADI MIRFAZALIAN, MD

Assistant Professor of Emergency Medicine, Department of Emergency Medicine, Tehran University of Medical Sciences, Tehran, Iran

Imaging suggestive, but symptoms atypical

A 66-YEAR-OLD MAN with chronic obstructive pulmonary disease (COPD) was brought to the emergency department with a 2-week history of progressive dyspnea followed by altered mental status. He had no history of diabetes mellitus, hypertension, or drug abuse.

On physical examination, he was stuporous. He had no fever or hypotension, but his pulse and breathing were rapid, and he had central cyanosis, bilateral conjunctival congestion, a puffy face, generalized wheezing, basilar crackles in both lungs, and leg edema.

Laboratory testing showed hypoxia and severe hypercarbia. His hematocrit was 65% (reference range 39–51) and his hemoglobin level was 21.5 g/dL (13–17).

The patient was diagnosed with an exacerbation of COPD. He was intubated, placed on mechanical ventilation, and admitted to the intensive care unit.

Computed tomography (CT) performed because of his decreased level of consciousness (**Figure 1**) showed increased attenuation in the ambient cistern and the lateral aspect of the lateral cerebral fissure, suggesting subarachnoid hemorrhage. The attenuation value in these areas was 89 Hounsfield units (typical values for brain tissue are in the 20s to 30s, and for blood in the 30s to 40s). To further evaluate for subarachnoid hemorrhage, lumbar puncture was performed, but analysis of the fluid sample showed normal protein and glucose levels and no cells.

Based on the results of cerebrospinal fluid evaluation and on the CT attenuation value, a diagnosis of pseudosubarachnoid hemorrhage due to polycythemia was made.

■ SUBARACHNOID VS PSEUDOSUBARACHNOID HEMORRHAGE

Subarachnoid hemorrhage typically begins with a “thunder-clap” headache (beginning suddenly and described by patients as “the worst headache ever.”) While not all

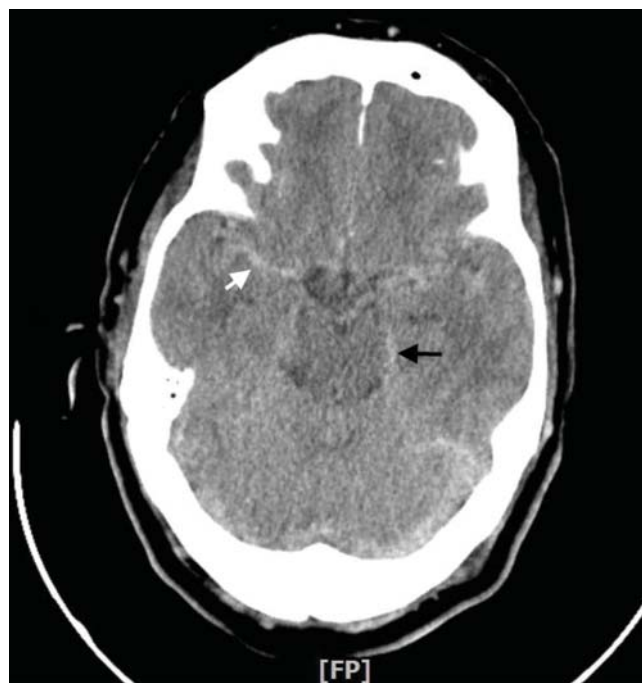


FIGURE 1. Computed tomography showed increased attenuation in the ambient cistern (black arrow) and cortical sulci (white arrow).

patients have this presentation, if imaging suggests subarachnoid hemorrhage but the patient has atypical signs and symptoms (eg, other than headache), then pseudosubarachnoid hemorrhage should be considered.

Brain CT is one of the most reliable tools for diagnosing subarachnoid hemorrhage in the emergency department. Done within 6 hours of symptom onset, it has a sensitivity of 98.7% and a specificity of 99.9%.¹ Magnetic resonance imaging can also visualize subarachnoid hemorrhage within the first 12 hours, typically as a hyperintensity in the subarachnoid space on fluid-attenuated inversion-recovery sequences² and on susceptibility-weighted sequences.

PSEUDOSUBARACHNOID HEMORRHAGE

Lumbar puncture is also an important diagnostic tool but carries a risk of brain herniation in patients with brain edema.

Pseudosubarachnoid hemorrhage is an artifact of CT imaging. It is rare, and its prevalence is unknown.³ However, it may be seen in up to 20% of patients after resuscitation, as a result of diffuse cerebral edema that lowers the attenuation of brain tissue on CT, making the vessels relatively conspicuous. It can also be seen in purulent meningitis (due to proteinaceous influx after blood-brain barrier disruption),⁴ in meningeal leukemia (due to increased cellularity in the leptomeninges), and in severe polycythemia (from a higher

concentration of blood and hemoglobin in the vessels).^{3,5-7}

Although the level of attenuation on CT may help distinguish subarachnoid from pseudosubarachnoid hemorrhage, its accuracy has not been defined. Inspecting the CT images may clarify whether areas with high attenuation look like blood vessels vs subarachnoid hemorrhage.

Our patient recovered and had an uneventful follow-up. The cause of his elevated hematocrit was likely chronic hypoxia from COPD.

ACKNOWLEDGMENT: We thank Dr. Saeide Khanbagi and Dr. Azade Nasr-lari for their cooperation.

REFERENCES

1. Dubosh NM, Bellolio MF, Rabinstein AA, Edlow JA. Sensitivity of early brain computed tomography to exclude aneurysmal subarachnoid hemorrhage: a systematic review and meta-analysis. *Stroke* 2016; 47:750-755.
2. Sohn CH, Baik SK, Lee HJ, et al. MR imaging of hyperacute subarachnoid and intraventricular hemorrhage at 3T: a preliminary report of gradient echo T2*-weighted sequences. *AJNR Am J Neuroradiol* 2005; 26:662-665.
3. Yuzawa H, Higano S, Mugikura S, et al. Pseudo-subarachnoid hemorrhage found in patients with postresuscitation encephalopathy: characteristics of CT findings and clinical importance. *AJNR Am J Neuroradiol* 2008; 29:1544-1549.
4. Given CA 2nd, Burdette JH, Elster AD, Williams DW 3rd. Pseudo-subarachnoid hemorrhage: a potential imaging pitfall associated with diffuse cerebral edema. *AJNR Am J Neuroradiol* 2003; 24:254-256.
5. Avrahami E, Katz R, Rabin A, Friedman V. CT diagnosis of non-traumatic subarachnoid haemorrhage in patients with brain edema. *Eur J Radiol* 1998; 28:222-225.
6. Ben Salem D, Osseby GV, Rezaizadeh-Bourdariat K, et al. Spontaneous hyperdense intracranial vessels seen on CT scan in polycythemia cases. *J Radiol* 2003; 84:605-608. French.
7. Hsieh SW, Khor GT, Chen CN, Huang P. Pseudo subarachnoid hemorrhage in meningeal leukemia. *J Emerg Med* 2012; 42:e109-e111.

ADDRESS: Mohammad Afzalimoghaddam, MD, Assistant Professor of Emergency Medicine, Tehran University of Medical Sciences, Keshavarz St., Tehran, 1568616813 Iran; mafzalimoghaddam@yahoo.com



The Cleveland Clinic Journal of

Medicine uses the AMA's database of physician names and addresses.

(All physicians are included in the AMA database, not just members of the AMA.) Only

the AMA can update this data, and the AMA will accept a change-of-address notice only from you.

Be sure your primary specialty and type of practice also are up-to-date on AMA records. This information is important in determining who receives the *Cleveland Clinic Journal of Medicine*.

If you have ever notified the AMA that you did not want to receive mail, you will not receive the *Cleveland Clinic Journal of Medicine*. You can reverse that directive by notifying the AMA. Please note that a change of address with the AMA will redirect all medically related mailings to the new location.

FOR FASTER SERVICE

■ PHONE 800-262-3211 ext. 5192

■ FAX 312-464-5843

■ E-MAIL nicole.neal@www.ama-assn.org

or send a recent mailing label along with new information to:

AMA
DEPARTMENT OF DATA SERVICES
515 North State Street
Chicago, IL 60654

NEW INFORMATION

NAME _____

STREET ADDRESS _____

CITY _____

STATE _____

ZIP _____

Please allow 6 to 8 weeks for change to take effect