

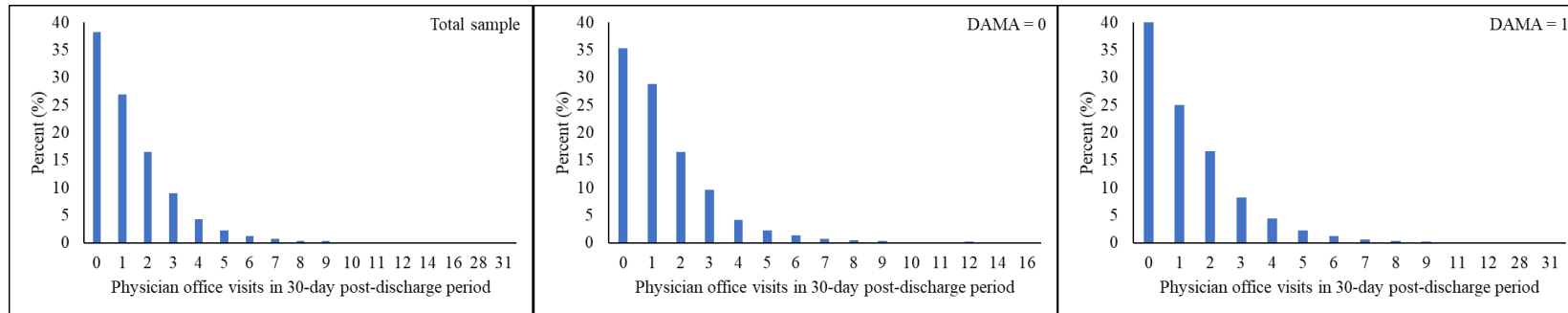
Appendix

Appendix Table 1: A comparison of standardized mean differences for baseline covariates between matched and unmatched samples

| | <i>Total Population (N = 4,490)</i> | <i>DAMA (N = 2,245)</i> | <i>Routine discharge (N = 2,245)</i> | <i>Std diff (Matched Sample)</i> | <i>Std diff (Unmatched Sample)</i> |
|--------------------------------------|---|-----------------------------|--|--|--|
| <i>Age category 1 (18-29)</i> | 1,080 (24.1) | 538 (24.0) | 542 (24.1) | 0.004 | 0.075 |
| <i>Age category 2 (30-39)</i> | 823 (18.3) | 414 (18.4) | 409 (18.2) | 0.006 | 0.152 |
| <i>Age category 3 (40-49)</i> | 994 (22.1) | 498 (22.2) | 496 (22.1) | 0.002 | 0.116 |
| <i>Age category 4 (50-64)</i> | 1,593 (35.5) | 795 (35.4) | 798 (35.6) | 0.003 | 0.031 |
| <i>Female</i> | 1,869 (41.6) | 934 (41.6) | 935 (41.7) | 0.001 | 0.526 |
| <i>Region 1 (East)</i> | 1,504 (33.5) | 754 (33.6) | 750 (33.4) | 0.004 | 0.362 |
| <i>Region 2 (Mid-West)</i> | 979 (21.8) | 489 (21.8) | 490 (21.8) | 0.001 | 0.229 |
| <i>Region 3 (South)</i> | 1,740 (38.7) | 869 (38.7) | 871 (38.8) | 0.002 | 0.077 |
| <i>Region 4 (West)</i> | 267 (6.0) | 133 (5.9) | 134 (6.0) | 0.002 | 0.069 |
| <i>Elixhauser score = 0</i> | 1,407 (31.3) | 703 (31.3) | 704 (31.3) | 0.001 | 0.325 |
| <i>Elixhauser score = 1</i> | 1,852 (41.3) | 923 (41.4) | 929 (41.1) | 0.005 | 0.122 |
| <i>Elixhauser score ≥ 2</i> | 1,231 (27.4) | 619 (27.6) | 612 (27.3) | 0.007 | 0.234 |
| <i>Timing of admission (Weekend)</i> | 995 (22.2) | 498 (22.2) | 497 (22.1) | 0.001 | 0.150 |
| <i>Admission year (2007-2009)</i> | 1,200 (26.7) | 598 (26.6) | 602 (26.8) | 0.004 | 0.082 |
| <i>Admission year (2010-2012)</i> | 1,503 (33.5) | 750 (33.4) | 753 (33.6) | 0.003 | 0.047 |
| <i>Admission year (2013-2015)</i> | 1,787 (39.8) | 897 (40.0) | 890 (39.6) | 0.006 | 0.124 |
| <i>Surgery during stay (Yes)</i> | 582 (13.0) | 290 (12.9) | 292 (13.0) | 0.003 | 1.100 |
| <i>Length of stay (Mean ± SD)</i> | 2.20 ± 3.29 | 2.21 ± 3.30 | 2.18 ± 3.27 | 0.011 | 0.202 |

DAMA: discharge against medical advice

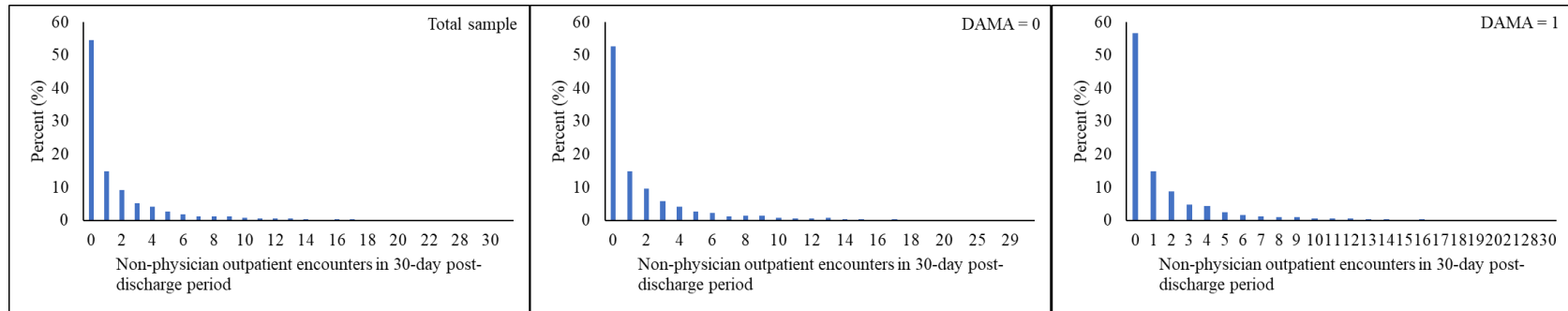
Appendix Figure 1: Histogram of 30-day physician office visit counts for the total sample and by DAMA status (matched sample)



Appendix Table 2: Information criteria comparisons with relative rankings for models (count of 30-day physician office visits)

| | -2LL | AIC | AICC | BIC | Pearson statistic |
|--|-------------|-------------|-------------|-------------|--------------------------|
| Poisson | 15787.8 (6) | 15791.8 (6) | 15791.8 (6) | 15804.6 (6) | 10271.8 (6) |
| Negative binomial | 14469.7 (3) | 14475.7 (3) | 14475.7 (3) | 14494.9 (3) | 5100.7 (3) |
| Poisson hurdle | 14857.4 (5) | 14875.4 (5) | 14875.4 (5) | 14933.1 (5) | 6707.3 (5) |
| <i>Negative binomial hurdle</i> | 14250.7 (1) | 14270.7 (1) | 14270.8 (1) | 14334.8 (1) | 4838.8 (1) |
| Zero-inflated Poisson | 14856.6 (4) | 14874.6 (4) | 14874.6 (4) | 14932.3 (4) | 6698.7 (4) |
| Zero-inflated negative binomial | 14311.4 (2) | 14331.4 (2) | 14331.5 (2) | 14395.5 (2) | 5072.2 (2) |

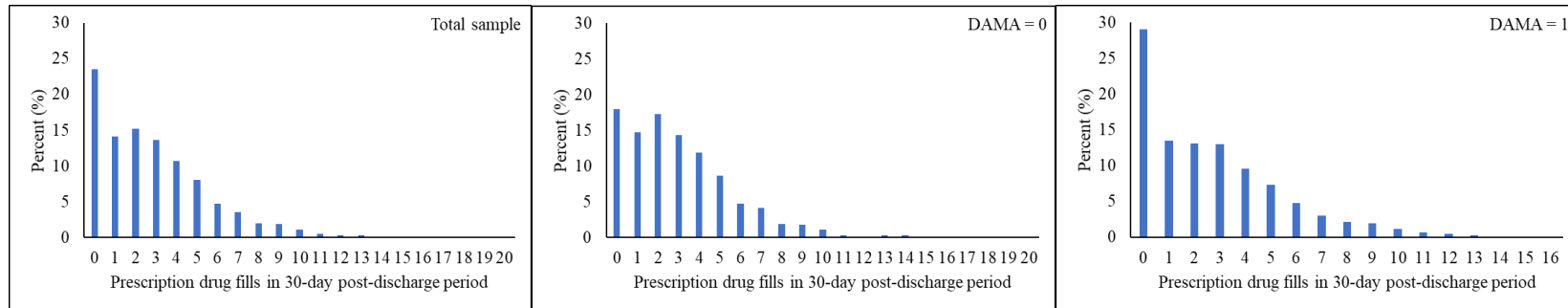
Appendix Figure 2: Histogram of 30-day non-physician outpatient encounter counts for the total sample and by DAMA status (matched sample)



Appendix Table 3: Information criteria comparisons with relative rankings for models (count of 30-day non-physician outpatient encounters)

| | -2LL | AIC | AICC | BIC | Pearson statistic |
|--|-------------|-------------|-------------|-------------|--------------------------|
| Poisson | 25303.4 (6) | 25307.4 (6) | 25307.4 (6) | 25320.2 (6) | 22095.7 (6) |
| Negative binomial | 18517.2 (3) | 18523.2 (3) | 18523.2 (3) | 18542.5 (3) | 5360.6 (3) |
| Poisson hurdle | 22407.7 (5) | 22425.7 (5) | 22425.8 (5) | 22483.4 (5) | 11276.4 (4) |
| Negative binomial hurdle | 18219.4 (1) | 18239.4 (1) | 18239.4 (1) | 18305.5 (1) | 4387.4 (1) |
| Zero-inflated Poisson | 22407.0 (4) | 22425.0 (4) | 22425.0 (4) | 22482.7 (4) | 11278.1 (5) |
| Zero-inflated negative binomial | 18423.8 (2) | 18443.8 (2) | 18443.8 (2) | 18507.9 (2) | 5325.6 (2) |

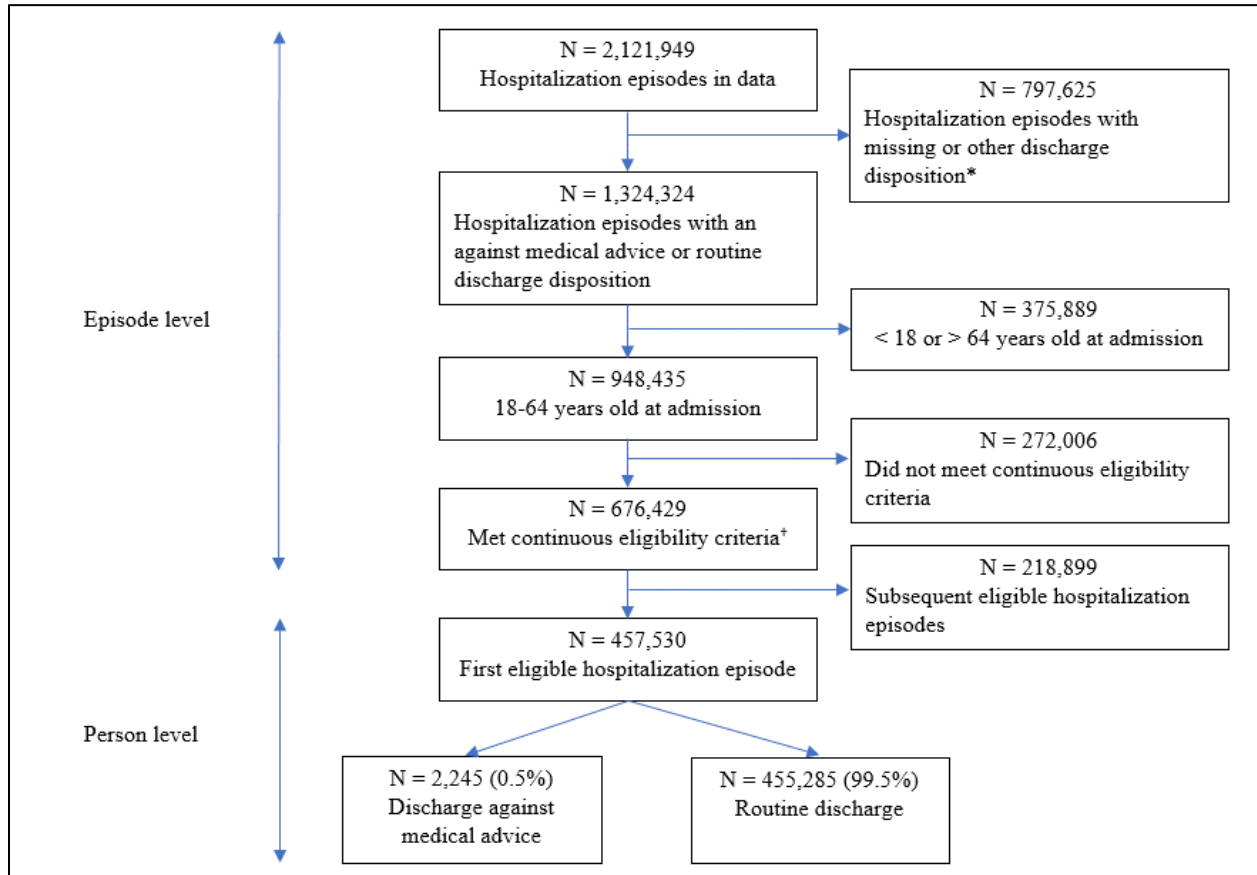
Appendix Figure 3: Histogram of 30-day prescription drug fill counts for the total sample and by DAMA status (matched sample)



Appendix Table 4: Information criteria comparisons with relative rankings for models (count of 30-day prescription drug fills)

| | -2LL | AIC | AICC | BIC | Pearson statistic |
|--|-------------|-------------|-------------|-------------|--------------------------|
| Poisson | 22502.7 (6) | 22506.7 (6) | 22506.7 (6) | 22519.5 (6) | 11784.5 (6) |
| Negative binomial | 19672.2 (3) | 19678.2 (3) | 19678.2 (3) | 19697.5 (3) | 4087.2 (1) |
| Poisson hurdle | 20131.0 (4) | 20149.0 (4) | 20149.1 (4) | 20206.7 (4) | 6524.3 (5) |
| <i>Negative binomial hurdle</i> | 19270.1 (1) | 19290.1 (1) | 19290.1 (1) | 19354.2 (1) | 4299.1 (2) |
| Zero-inflated Poisson | 20132.3 (5) | 20150.3 (5) | 20150.4 (5) | 20208.0 (5) | 6515.8 (4) |
| Zero-inflated negative binomial | 19283.9 (2) | 19303.9 (2) | 19304.0 (2) | 19368.0 (2) | 4342.5 (3) |

Appendix Figure 4: Consort diagram displaying study inclusion and exclusion criteria for the study sample



*Other hospitalizations include those that resulted in in-hospital deaths, discharge to a short-term hospital, skilled nursing facility, intermediate care facility or any other type of facility

†Continuous eligibility definition: 7 months of continuous medical and prescription drug insurance enrollment (6 months prior through 1 month post index hospitalization)