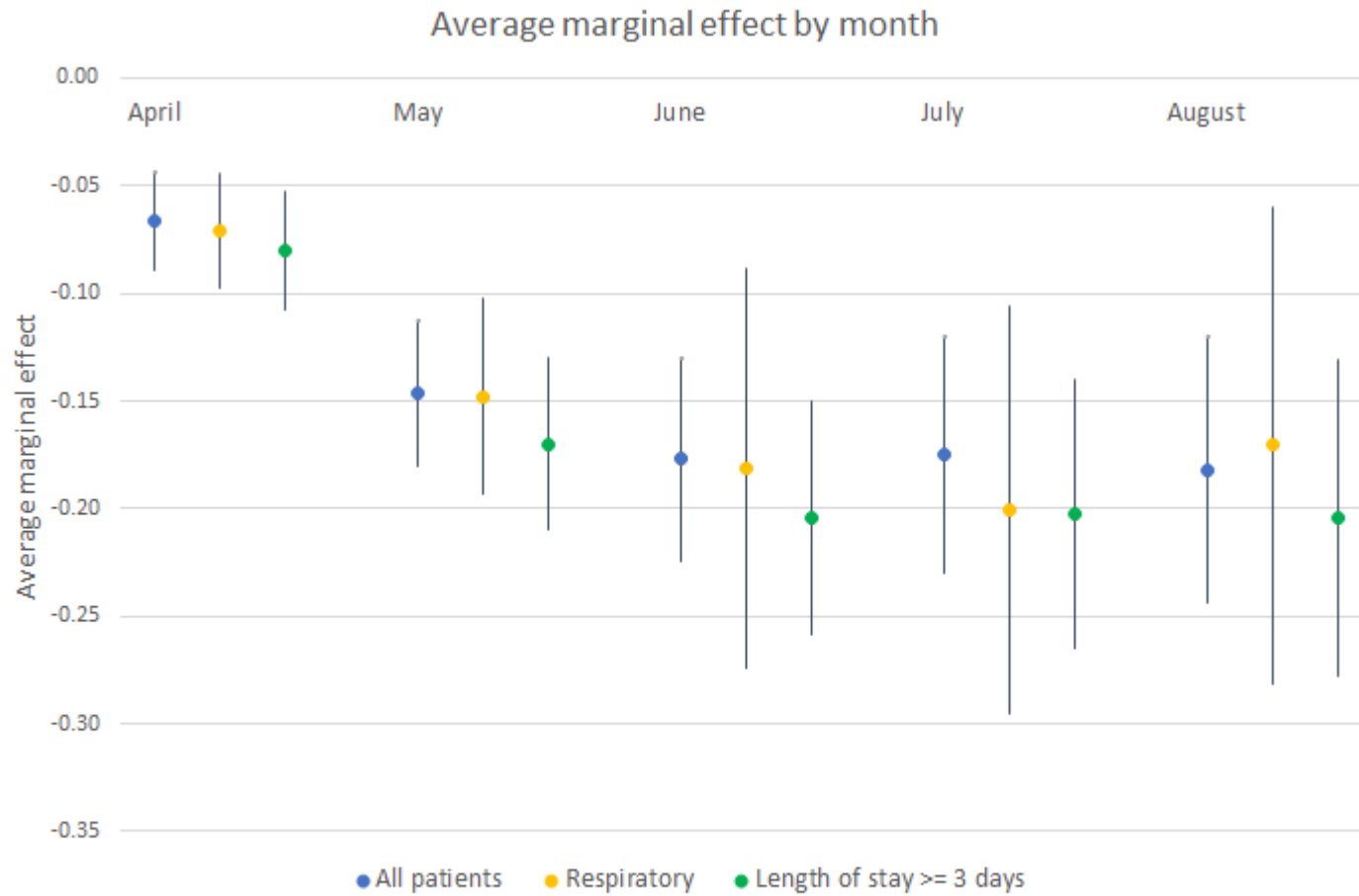


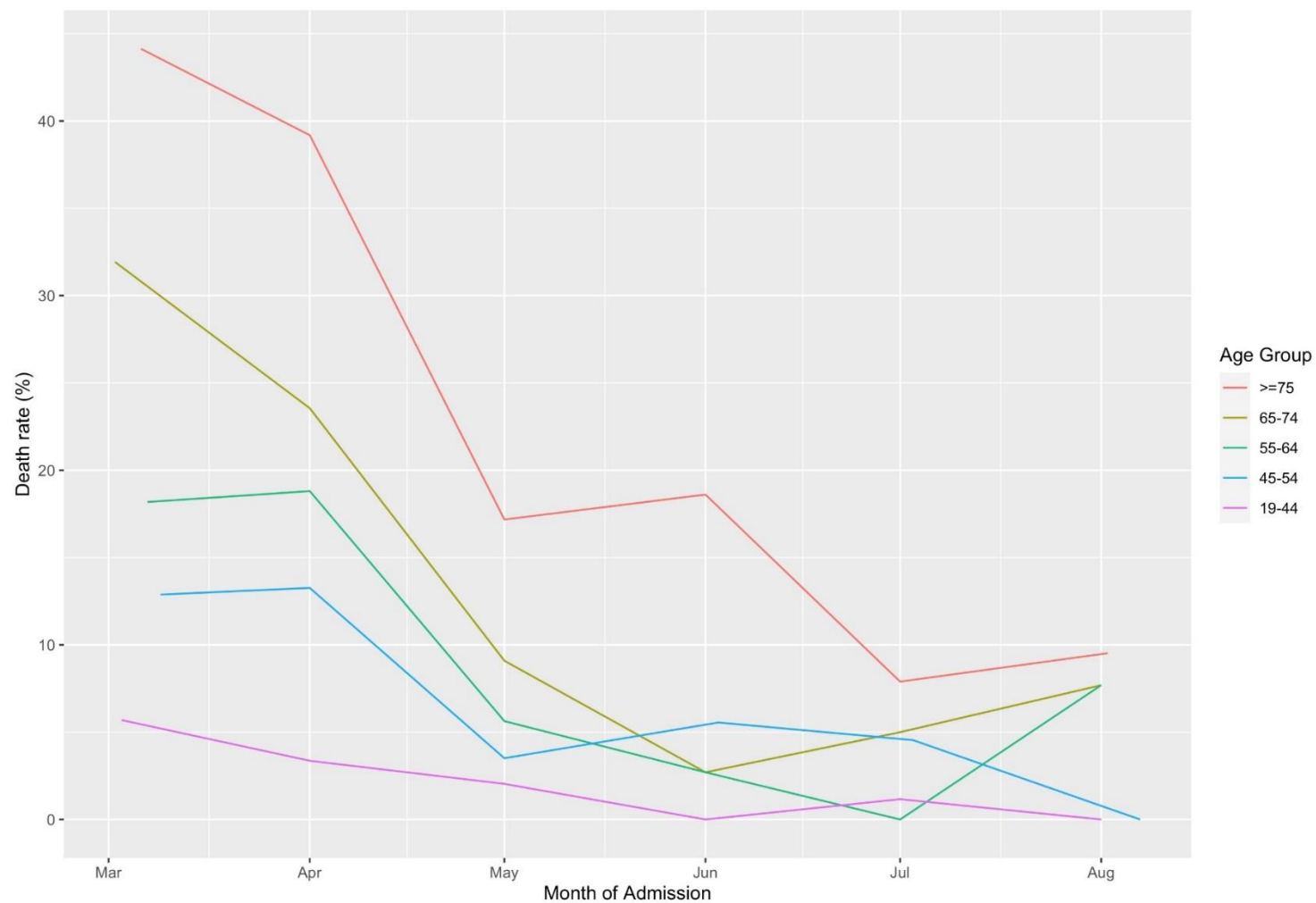
**Appendix A: Codes used to define principal diagnosis of COVID-19, sepsis, or respiratory disease**

<b>ICD-10 code</b>	<b>Description</b>	<b>N</b>
J21.9	'Acute bronchiolitis, unspecified'	1
J80	'Acute respiratory distress syndrome'	2
J96.01	'Acute respiratory failure with hypoxia'	15
J06.9	'Acute upper respiratory infection, unspecified'	7
U07.1	'COVID-19'	1998
J44.1	'Chronic obstructive pulmonary disease with (acute) exacerbation'	1
R05	'Cough'	1
O99.52	'Diseases of the respiratory system complicating childbirth'	3
O99.512	'Diseases of the respiratory system complicating pregnancy, second trimester'	1
J45.41	'Moderate persistent asthma with (acute) exacerbation'	2
B97.29	'Other coronavirus as the cause of diseases classified elsewhere'	33
J98.8	'Other specified respiratory disorders'	16
A41.89	'Other specified sepsis'	1547
J12.89	'Other viral pneumonia'	222
J12.81	'Pneumonia due to SARS-associated coronavirus'	2
J18.9	'Pneumonia, unspecified organism'	8
R09.2	'Respiratory arrest'	1
J96.91	'Respiratory failure, unspecified with hypoxia'	1
A41.9	'Sepsis, unspecified organism'	155
R06.02	'Shortness of breath'	1
J22	'Unspecified acute lower respiratory infection'	4
J12.9	'Viral pneumonia, unspecified'	6

## Appendix B: Average marginal effect by month, main analysis and sensitivity analyses



### Appendix C: Unadjusted mortality rate over time, by age group



**Appendix D: Results restricted to COVID-19, sepsis, or respiratory disease**

Month	N	Age, median (IQR)	Male, N (%)	Any chronic condition, N (%)	Mortality, N (%)	Adjusted mortality (95% Poisson limits)	Standardized mortality ratio (95% CI)	Average marginal effect (95% CI)
Overall	4027	66 (54, 78)	2416 (60.0)	3396 (84.3)	990 (24.6)	N/A	1.0	N/A
March	1575	64 (52, 75)	1009 (64.1)	1286 (81.7)	415 (26.3)	31.4 (28.5, 34.6)	1.28 (1.16, 1.41)	REF
April	2060	67 (56, 79)	1204 (58.5)	1760 (85.4)	523 (25.4)	24.0 (21.9, 26.1)	0.97 (0.89, 1.06)	-7.1 (-9.8, -4.4)
May	259	71 (57, 84)	134 (51.7)	234 (90.4)	40 (15.4)	17.0 (12.1, 23.1)	0.69 (0.49, 0.94)	-14.8 (-19.3, -10.3)
June	47	64 (54, 79)	27 (57.5)	43 (91.5)	5 (10.6)	13.8 (4.5, 32.3)	0.56 (0.18, 1.31)	-18.1 (-27.4, -8.8)
July	52	68 (57.5, 79.5)	24 (46.2)	44 (84.6)	3 (5.8)	10.1 (2.1, 29.5)	0.41 (0.08, 1.20)	-20.1 (-29.5, -10.6)
August	34	68.5 (50, 74)	18 (52.9)	29 (85.3)	4 (11.8)	14.4 (3.9, 36.9)	0.59 (0.16, 1.50)	-17.0 (-28.1, -6.0)

IQR: interquartile range; CI: confidence interval; N/A: not applicable; REF: reference level

**Appendix E: Results restricted to length of stay  $\geq 3$  days**

Month	N	Age, median (IQR)	Male, N (%)	Any chronic condition, N (%)	Mortality, N (%)	Adjusted mortality (95% Poisson limits)	Standardized mortality ratio (95% CI)	Average marginal effect (95% CI)
Overall	4106	65 (53, 77)	2406 (58.6)	3428 (83.5)	901 (21.9)		N/A	N/A
March	1449	64 (52, 74)	916 (63.2)	1181 (81.5)	382 (26.4)	28.2 (25.4, 31.2)	1.29 (1.16, 1.42)	REF
April	1912	67 (56, 78.5)	1122 (58.7)	1629 (85.2)	463 (24.2)	20.4 (18.6, 22.4)	0.93 (0.85, 1.02)	-8.0 (-10.7, -5.3)
May	362	67 (52, 82)	180 (49.7)	313 (86.5)	37 (10.2)	12.3 (8.7, 17.0)	0.56 (0.39, 0.77)	-17.0 (-21.0, -13.0)
June	152	63 (46, 75)	77 (50.7)	124 (81.6)	9 (5.9)	8.9 (4.1, 16.9)	0.41 (0.19, 0.77)	-20.4 (-25.8, -15.0)
July	146	63 (45, 73)	75 (51.4)	113 (77.4)	6 (4.1)	8.4 (3.1, 18.4)	0.39 (0.14, 0.84)	-20.3 (-26.5, -14.0)
August	85	59 (42, 74)	36 (42.4)	68 (80.0)	4 (4.7)	8.4 (2.3, 21.5)	0.38 (0.10, 0.98)	-20.4 (-27.8, -13.0)

IQR: interquartile range; CI: confidence interval; N/A: not applicable; REF: reference level