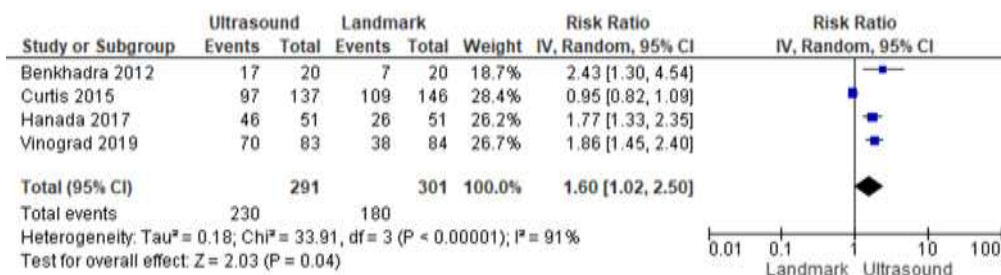
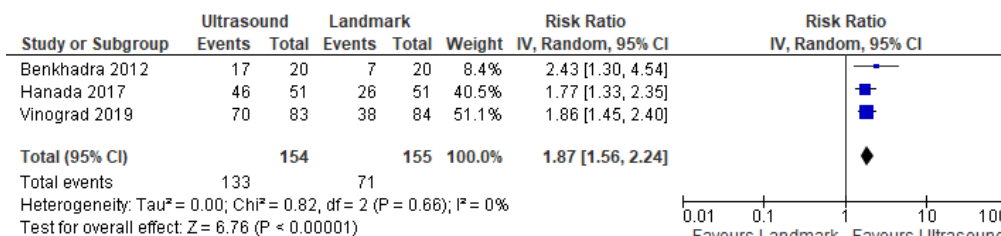


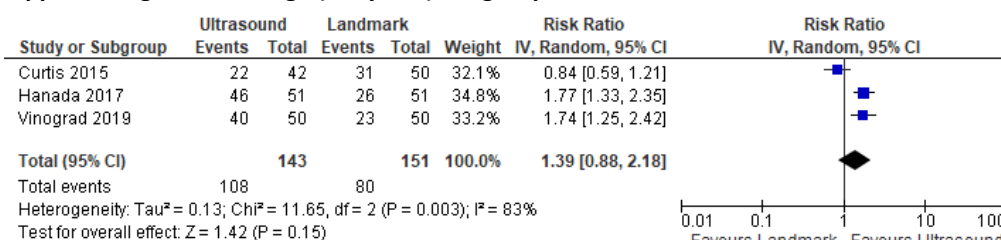
Appendix Figure 2.1 - Landmark v Ultrasound - First time insertion success



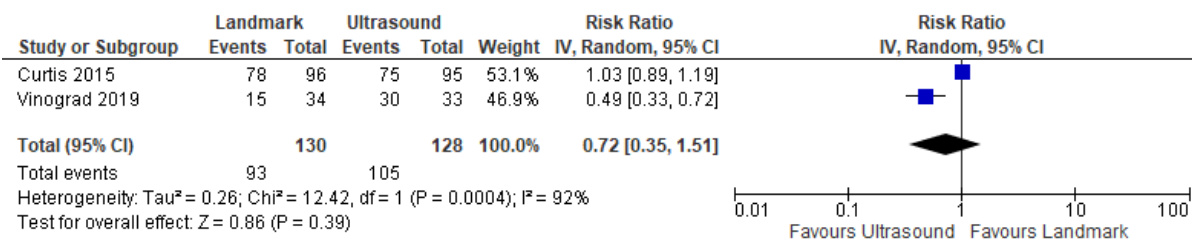
Appendix Figure 2.1a – DIVA Subgroup - Landmark v Ultrasound – First time insertion success



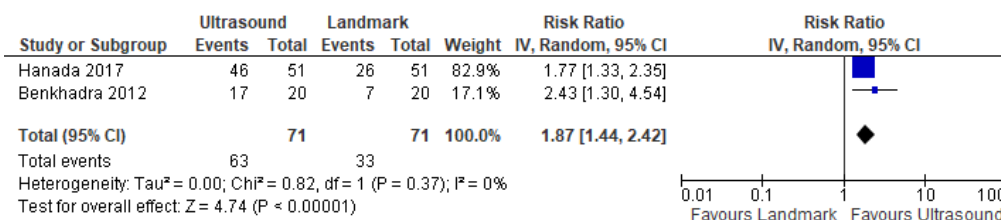
Appendix Figure 2.1b – Age (0-3 years) Subgroup - Landmark v Ultrasound – First time insertion success



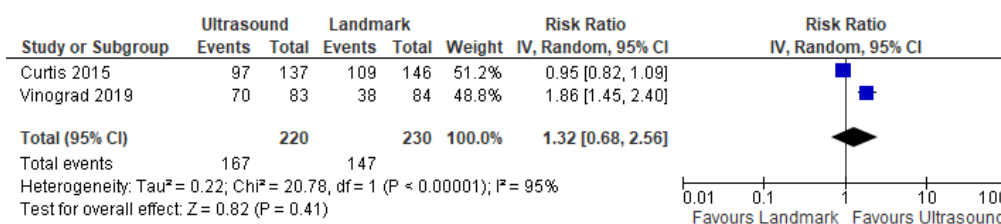
Appendix Figure 2.1c – Age (>3 years) Subgroup - Landmark v Ultrasound – First time insertion success



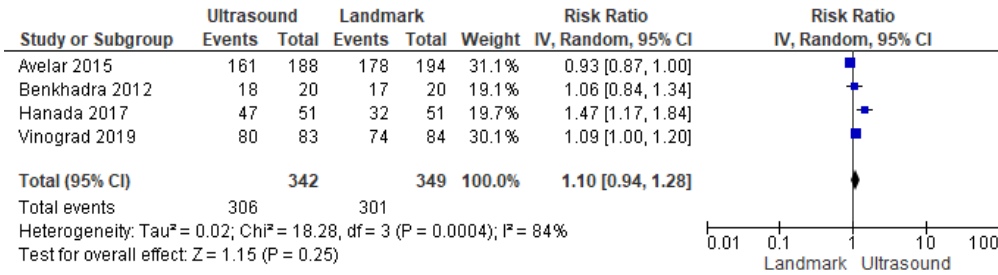
Appendix Figure 2.1d – Specialty inserting Subgroup (Anaesthetists) Landmark v ultrasound First time insertion success



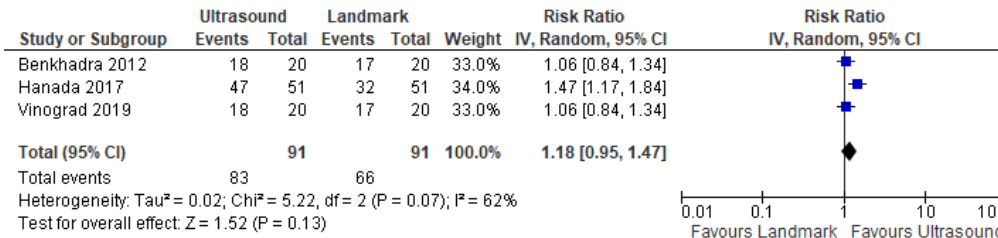
Appendix Figure 2.1e – Department subgroup (Emergency) Landmark v ultrasound First time insertion Success



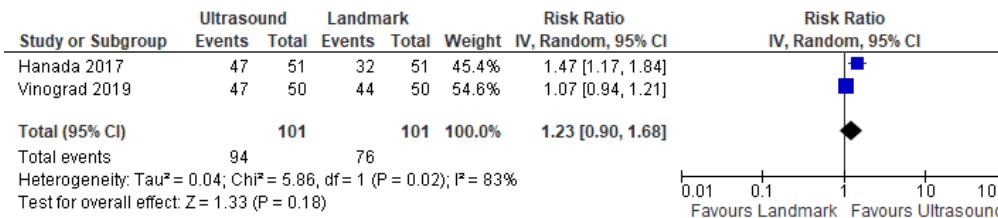
Appendix Figure 2.2 - Landmark v Ultrasound - Overall insertion success



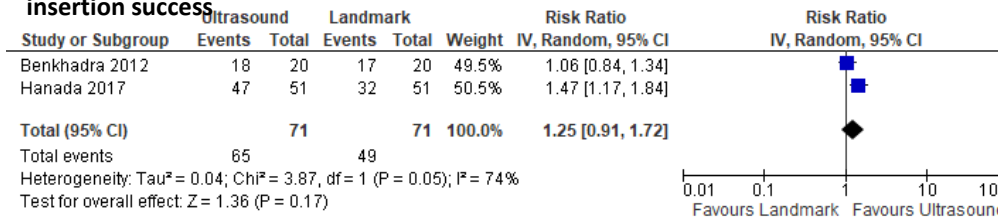
Appendix Figure 2.2a – DIVA Subgroup - Landmark v Ultrasound - Overall insertion success



Appendix Figure 2.2b – Age (0-3 years) Subgroup - Landmark v Ultrasound - Overall insertion success



Appendix Figure 2.2c – Specialty Subgroup (Anaesthetists) Landmark v ultrasound Overall insertion success



Appendix Figure 2. Meta-analysis - Ultrasound guided PIVC insertion compared to landmark technique