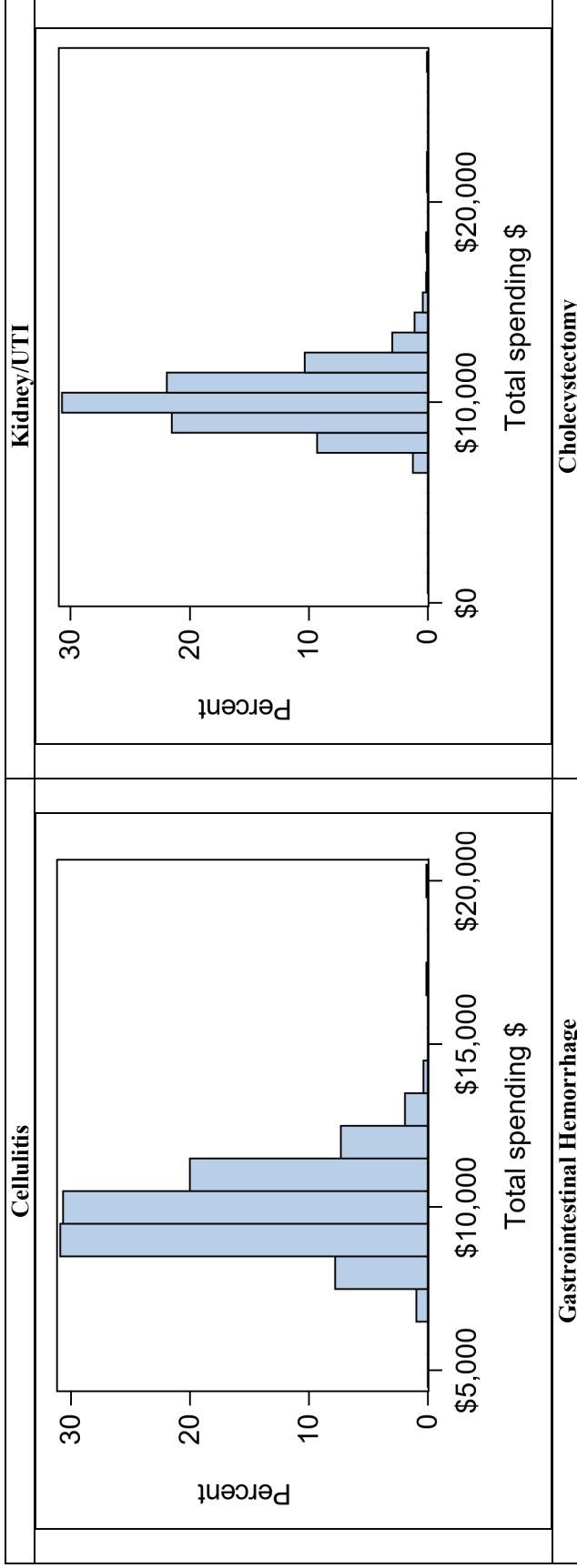
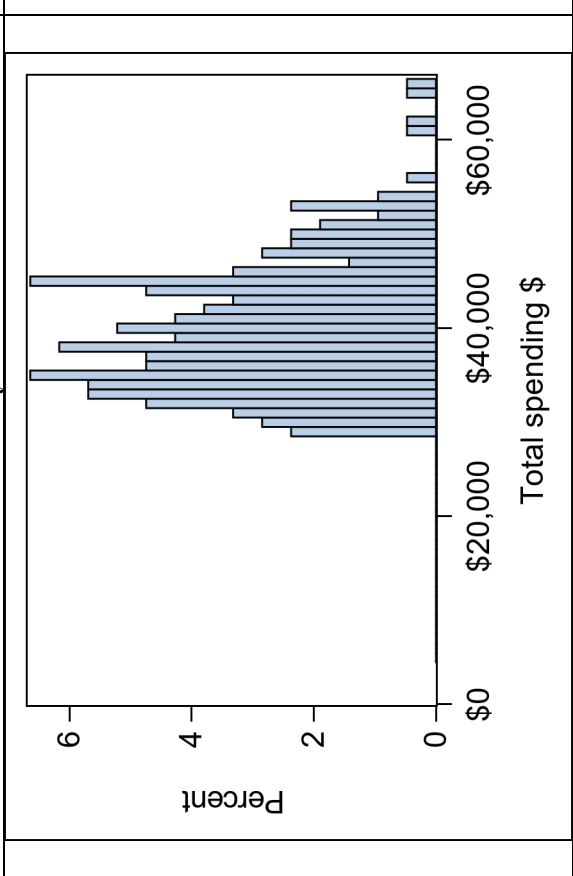
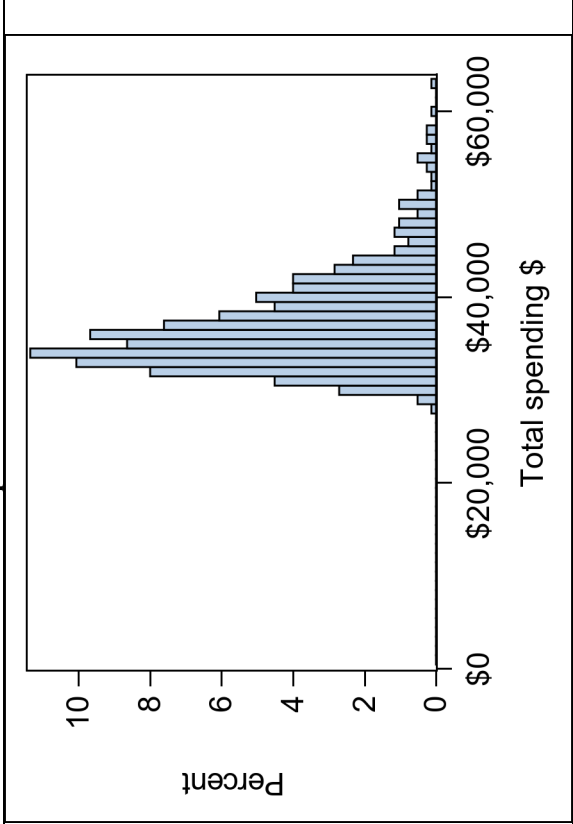
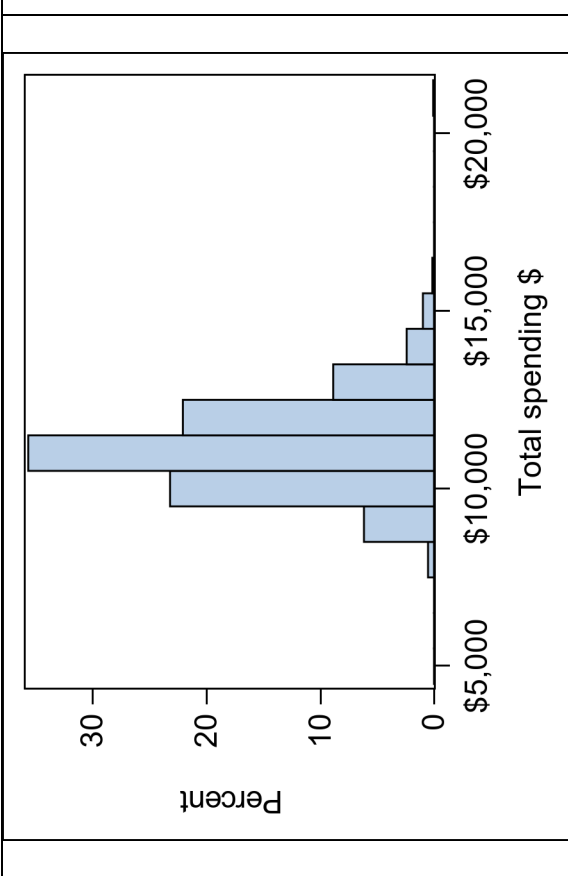
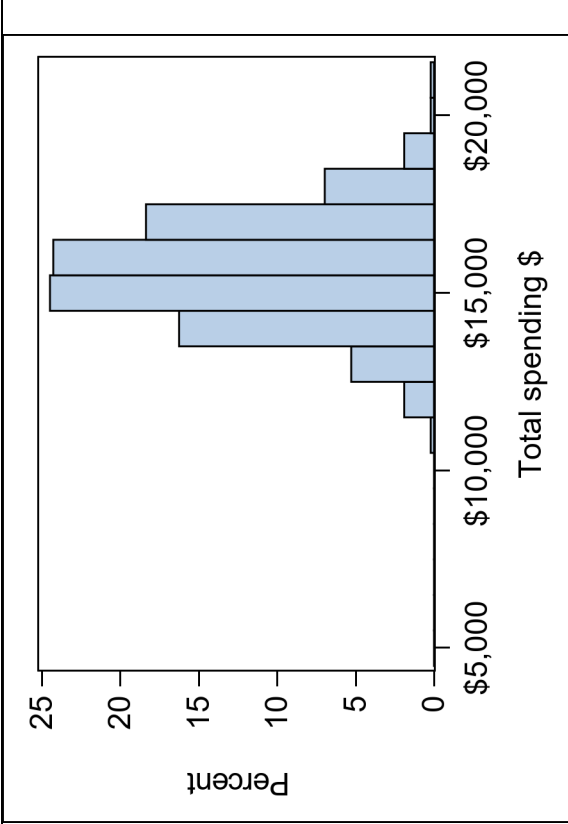


**Appendix for  
“Nationwide Hospital Performance on Publicly Reported Episode Spending Measures”**

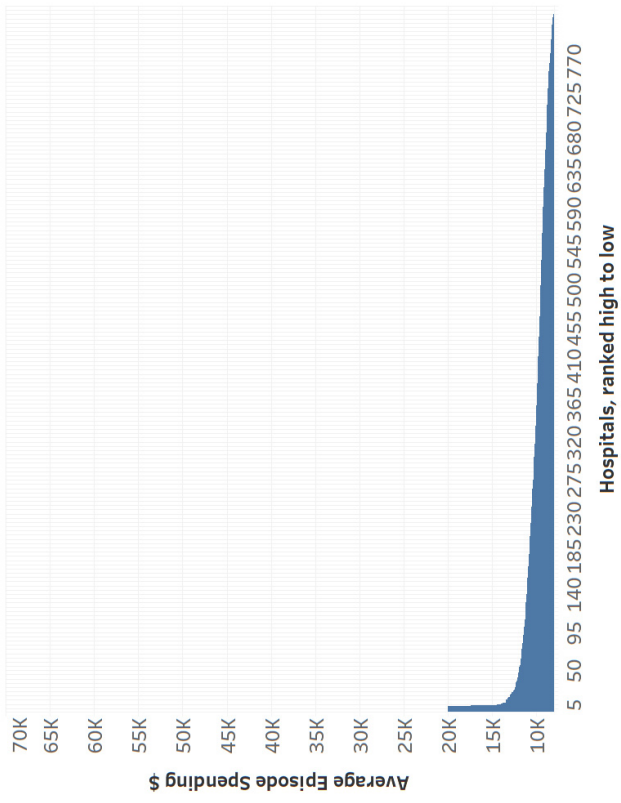
**Appendix Figure 1. Distribution of Average Episode Spending, by Episode Type**





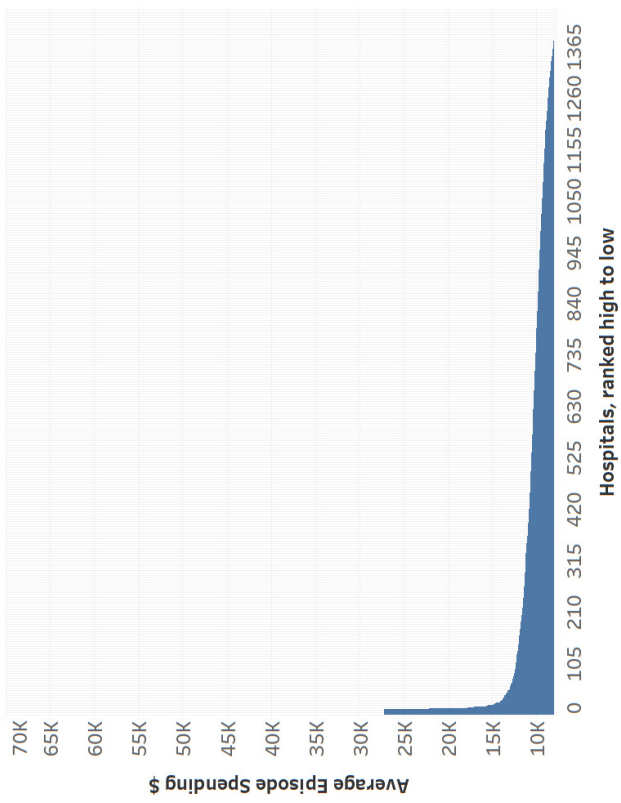
Appendix Figure 2. Average Episode Spending Across Eligible Hospitals, by Episode Type

**Cellulitis**

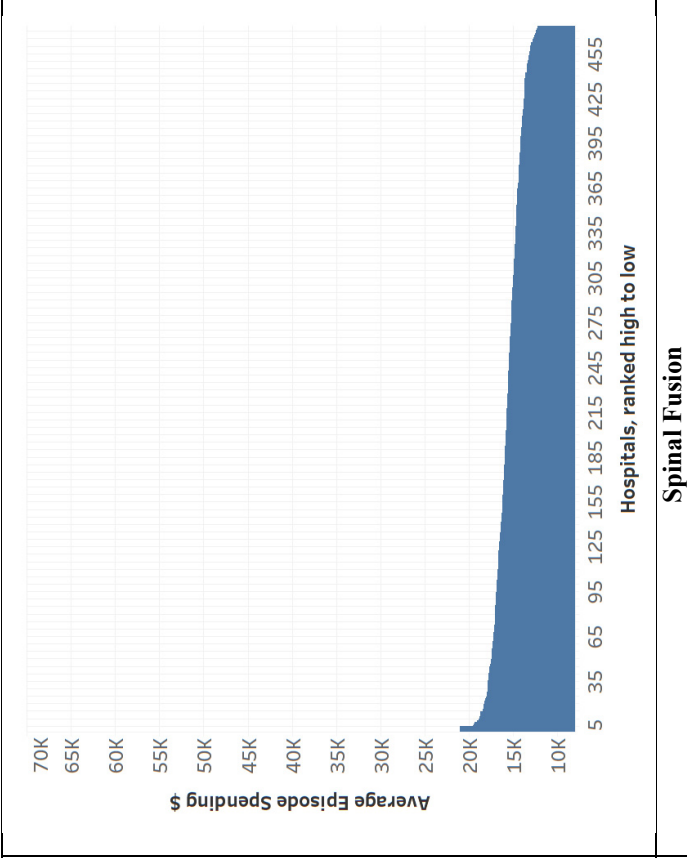
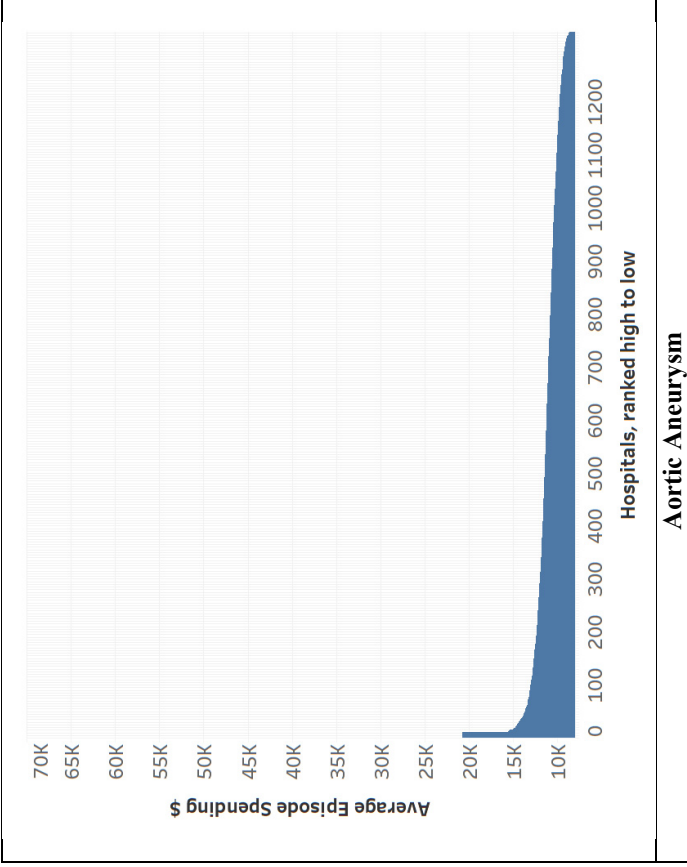


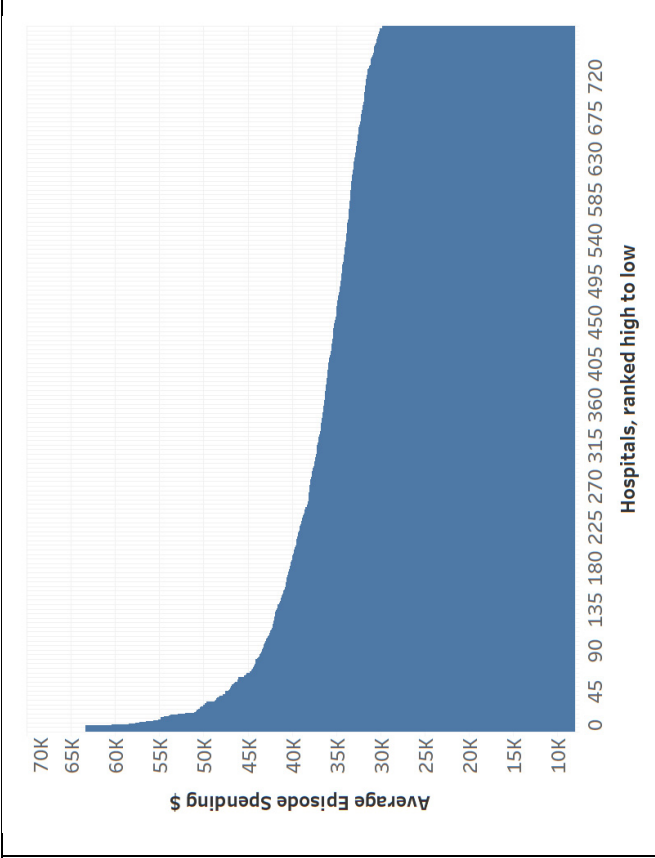
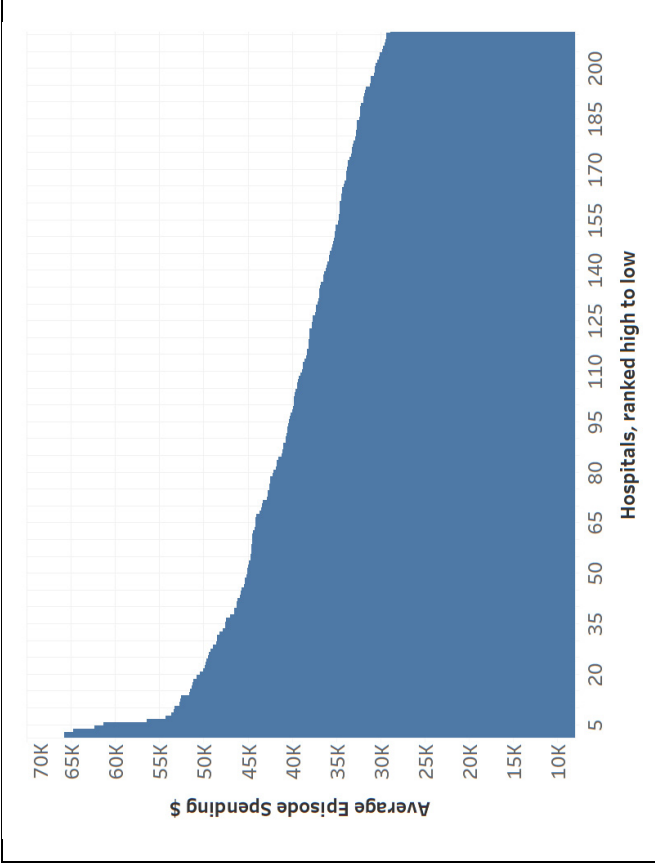
**Gastrointestinal Hemorrhage**

**Kidney/UTI**

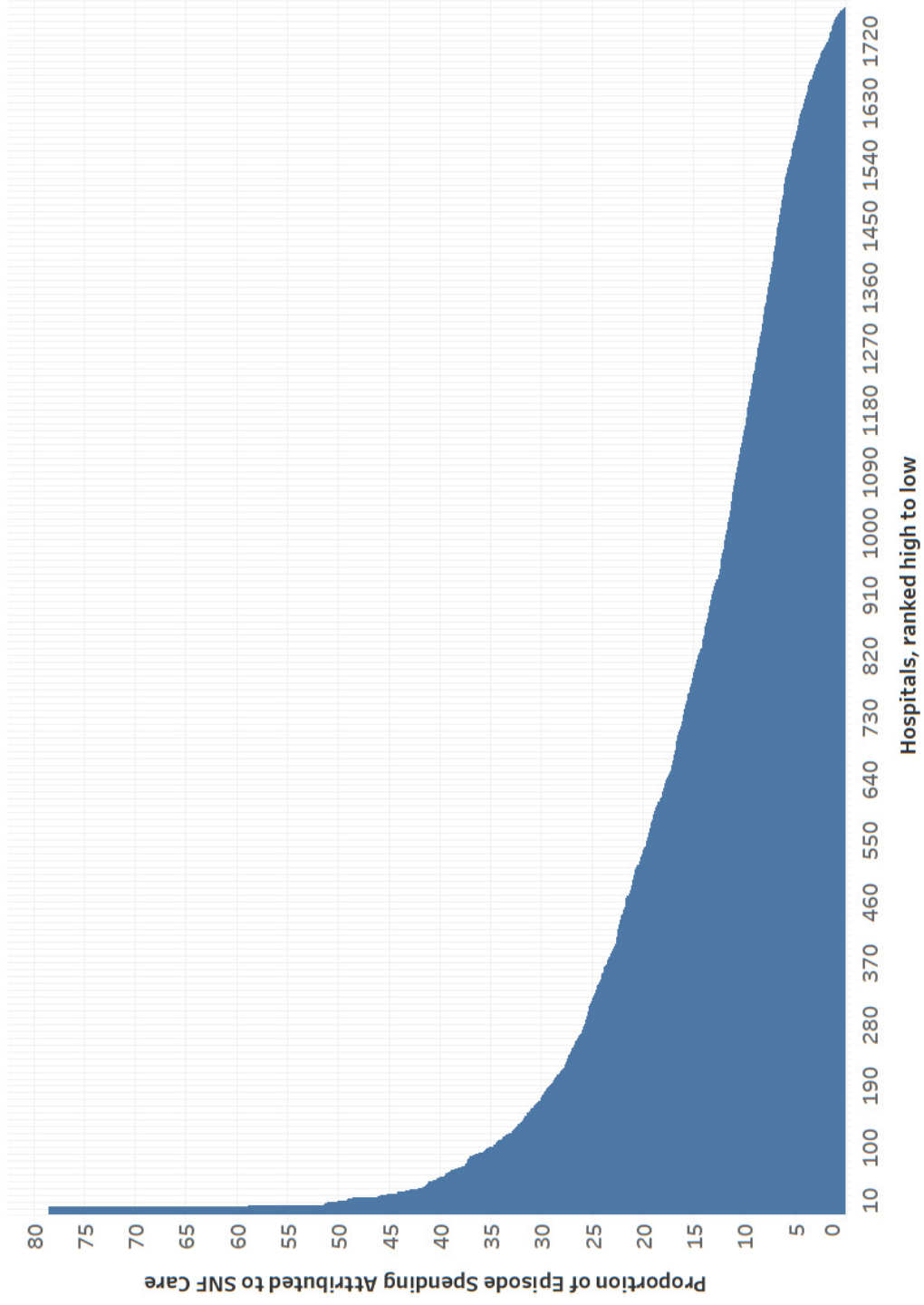


**Cholecystectomy**





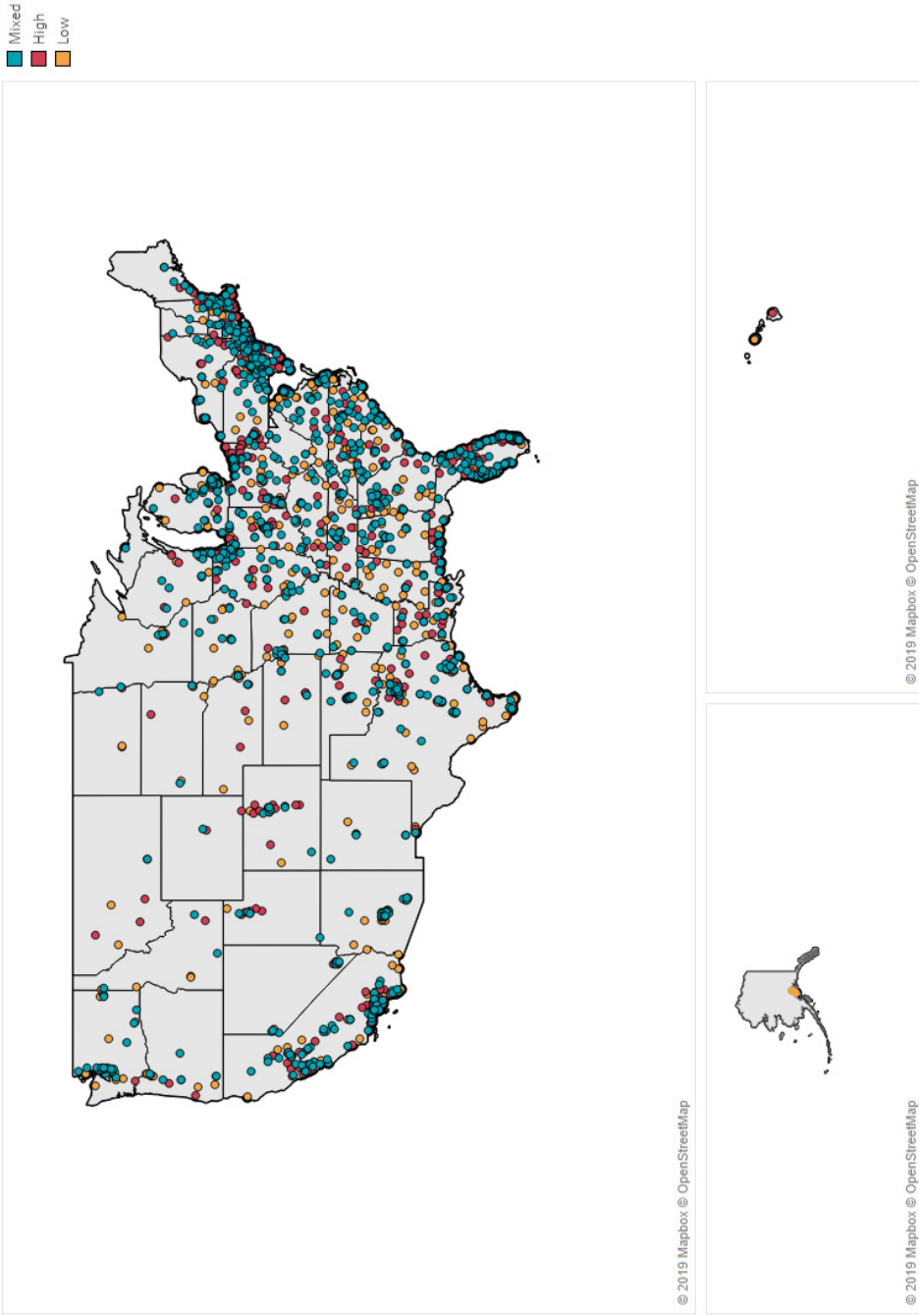
**Appendix Figure 3. Proportion of Episode Spending Attributed to SNF Care, All Episode Types**



**Appendix Table 1. Within-Hospital Correlation Between CEBP measures**

	<b>Cellulitis</b>	<b>Kidney/UTI</b>	<b>Gastrointestinal Hemorrhage</b>	<b>Aortic Aneurysm</b>	<b>Cholecystectomy</b>	<b>Spinal Fusion</b>
<b>Cellulitis</b>	1	0.42	0.33	-0.0012	0.13	0.057
<b>Kidney/UTI</b>	0.42	1	0.36	-0.079	0.14	0.040
<b>Gastrointestinal Hemorrhage</b>	0.33	0.36	1	-0.042	0.26	0.13
<b>Aortic Aneurysm</b>	-0.0012	-0.079	-0.042	1	0.037	0.28
<b>Cholecystectomy</b>	0.13	0.14	0.26	0.037	1	0.041
<b>Spinal Fusion</b>	0.057	0.040	0.13	0.28	0.041	1

Appendix Figure 4. Geographic Distribution of Hospitals by Cost Group (All Episode Types)





**Appendix Table 2. Sensitivity Analysis of Episode Spending by Components**

All Episodes				
	Episode Component, %	Low SNF Cost (n=1,333)	High SNF Cost (n=445)	p-value
	Hospitalization	82.2	63.6	<0.001
	SNF	9.7	28.4	
	Other	8.1	8.0	
Individual Episode Types				
Episode Type	Episode Component, \$	Other Spending (n=159)	High Spending (n=52)	p-value
Aortic Aneurysm	Hospitalization	34,094	45,762	<0.001
	SNF	611	2,033	
	Other	1,783	3,806	
Cellulitis		Other Spending (n=628)	High Spending (n=208)	<0.001
	Hospitalization	6,651	7,303	
	SNF	1,509	3,293	
	Other	1,007	1,699	
Cholecystectomy		Other Spending (n=356)	High Spending (n=118)	<0.001
	Hospitalization	12,975	14,591	
	SNF	619	1,891	

	Other	1,000	2,015	
		<b>Other Spending (n=1,000)</b>	<b>High Spending (n=333)</b>	
<b>Gastrointestinal Hemorrhage</b>	Hospitalization	8,293	9,355	<0.001
	SNF	1,078	2,442	
	Other	968	1,826	
		<b>Other Spending (n=1,085)</b>	<b>High Spending (n=358)</b>	
<b>Kidney/UTI</b>	Hospitalization	6,194	6,772	<0.001
	SNF	2,590	4,881	
	Other	601	1,021	
		<b>Other Spending (n=582)</b>	<b>High Spending (n=194)</b>	
<b>Spinal Fusion</b>	Hospitalization	30,913	39,674	<0.001
	SNF	872	2,861	
	Other	2,079	4,291	

**Appendix Table 3. Correlation Between CEBP and Medicare Spending Per Beneficiary**

	Medicare Spending Per Beneficiary
<b>Aggregated CEBP</b>	0.42
<b>Individual CEBP Measures</b>	
Cellulitis	0.31
Kidney/UTI	0.36
Gastrointestinal Hemorrhage	0.32
Aortic Aneurysm	0.14
Cholecystectomy	0.26
Spinal Fusion	0.26