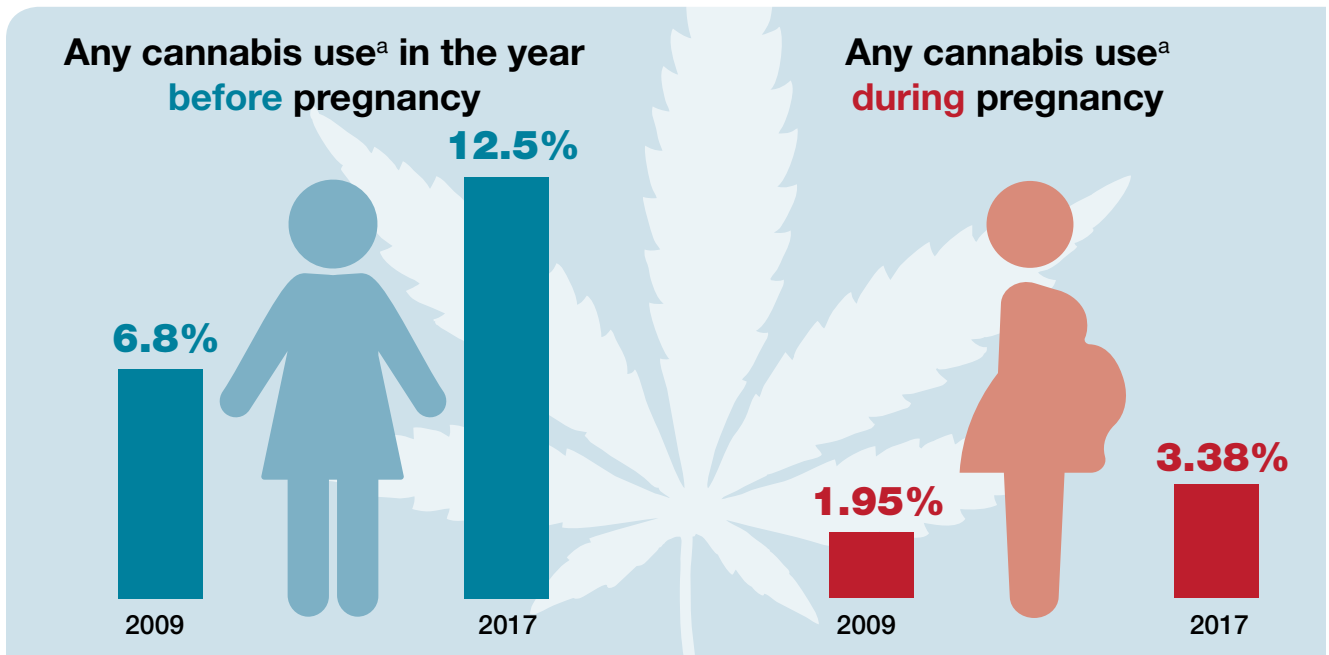


# Cannabis use before and during pregnancy is on the rise



## Highest self-reported cannabis use during pregnancy

	Monthly or less	Weekly	Daily
<b>Age group: 11-17</b>	6.1%	2.1%	1.5%
<b>Race/ethnicity: African American</b>	4.2%	2.4%	2.1%
<b>Median household income: &lt;\$51,583</b>	2.0%	1.0%	0.9%

<sup>a</sup>Self-reported cannabis use among 276,991 women universally screened at approximately 8 weeks' gestation during standard prenatal care for 367,403 pregnancies at Kaiser Permanente Northern California. Adjusted prevalence estimates were estimated from Poisson regression models controlling for age group, race/ethnicity, and median neighborhood household income.

Source: Young-Wolff KC, Sarovar V, Tucker L, et al. Self-reported daily, weekly, and monthly cannabis use among women before and during pregnancy. *JAMA Network Open*. 2019;2:e196471.