

Outcomes After Prolonged ICU Stays in Postoperative Cardiac Surgery Patients

Thomas F. Curran, MD, MBA^{a,b}; Bipin Sunkara, MD^c; Aleda Leis^a; Adrian Lim, MD, PharmD^d; Jonathan Haft, MD^{a,b}; Milo Engoren, MD^a

Background: Prolonged postoperative intensive care unit (ICU) stays are common after cardiac surgery and are associated with poor outcomes. There are few studies evaluating how risk factors associated with mortality may change during prolonged ICU stays or how mortality may vary with length of stay. We evaluated operative and long-term mortality in post-cardiac surgery patients after prolonged ICU stays at 7, 14, 21, and 28 days and factors associated with mortality.

Methods: We included University of Michigan Medical Center cardiac surgery patients with ≥ 7 postoperative days in the ICU. We determined factors associated with hospital mortality at 7, 14, 21, and 28 days of ICU stay using logistic regression, and among hospital survivors, we determined the factors associated with long-term mortality using Cox regression.

Results: Of 8309 ICU admissions from cardiac surgery, 1174 (14%) had ICU stays > 7 days. Operative mortality was 11%, 18%, 22%, and 35% for the 7-, 14-, 21-, and 28-day groups, respectively. Mechanical ventilation on the day of assessment was associated with increased odds ratios of operative mortality in all models. Of the 1049 (89%) hospital survivors, 420 (40%) died by late follow-up. Median (IQR) Cox model survival was 10.7 (0.7) years. Longer ICU stays, postoperative pneumonia, and elevated discharge blood urea nitrogen were associated with increased hazard of dying; whereas higher discharge platelet count and cardiac transplant were protective.

Conclusions: Both operative and late mortality increased as the duration of a ICU stay increased after cardiac surgery.

Author affiliations can be found at the end of this article.

Correspondence:

Thomas Curran
(thcurran@med.umich.edu)

Fed Pract. 2022;39(suppl 5).
Published online November 15.
doi:10.12788/fp.0300

Prolonged intensive care unit (ICU) stays, variably defined as > 48 h to > 14 days, are a known complication of cardiac surgery.¹⁻⁸ Prolonged stays are associated with higher resource utilization and higher mortality.^{2,3,9-12} Although there are several cardiac surgery risk models that can be used preoperatively to identify patients at risk for prolonged ICU stay, factors that influence outcomes for patients who experience prolonged ICU stays are poorly understood.^{2,13-19} Little information is available to inform discussions between health care practitioners (HCPs) and patients throughout a prolonged ICU stay, especially those ≥ 7 days.

As cardiac surgical complexity, patient age, and preexisting comorbidities have increased over time, so has the need to provide patients and HCPs with data to inform decision making, enhance prognostication, and set realistic expectations at varying time intervals during prolonged ICU stay. The purpose of this study was to evaluate short- and long-term outcomes in cardiac surgery patients after prolonged ICU stays at relevant time intervals (7, 14, 21, and 28 days) and to determine factors that may predict a patient's outcome after a prolonged ICU stay.

METHODS

The University of Michigan Health System Institutional Review Board approved this study and waived informed consent. We merged the University of Michigan Medical Center Society of

Thoracic Surgeons (STS) database, which is updated periodically with late mortality, with elements of the electronic health record (EHR). Adult patients were included if they had cardiac surgery at the University of Michigan between January 2, 2001, and December 31, 2011. Late mortality was updated through December 1, 2014. Data are presented as frequency (%), mean (SD), and median (IQR) as appropriate. Bivariate comparisons between survivors and nonsurvivors were done with χ^2 or Fisher exact test for categorical data, Student *t* test for continuous normally distributed data, and Wilcoxon rank sum test for continuous not normally distributed data. To determine factors associated with operative mortality (death within 30 days of surgery or hospital discharge, whichever occurred later), we used logistic regression with forward selection. All available factors were initially entered in the models.

Separate logistic models were created based on all data available at days 7, 14, 21, and 28. Final models consisted of factors with statistically significant *P* values ($< .05$) and adjusted odds ratios (AORs) with 95% CIs that excluded 1. To determine factors associated with late mortality, we used a Cox proportional hazard model, which used data available at discharge and STS complications. As these complications did not include their timing, they could only be used in models created at discharge and not for days 7, 14, 21, and 28 models. Final models consisted of factors with *P* values $< .05$ and

95% CIs of the AORs or the hazard ratios (HRs) that excluded 1. As the EHR did not start recording data until January 2, 2004, and its capture of data remained incomplete for several years, rather than imputing these missing data or excluding these patients, we chose to create an extra categorical level for each factor to represent missing data. For continuous factors with missing data, we first converted the continuous data to terciles and the missing data became the fourth level.^{20,21}

The discrimination of the logistic models were determined by the c-statistic and for the Cox proportional hazards model with the Harrell concordance index (C index). Time trends were assessed with the Cochran-Armitage trend test. $P < .05$ was deemed statistically significant. Statistics were calculated with SPSS versions 21-23 or SAS 9.4.

RESULTS

Of 8309 admissions to the ICU after cardiac surgery, 1174 (14%) had ICU stays ≥ 7 days, 386 (5%) ≥ 14 days, 201 (2%) ≥ 21 days, and 80 (0.9%) ≥ 28 days. The prolonged ICU study population was mostly male, White race, with a mean (SD) age of 62 (14) years. Patients had a variety of comorbidities, most notably 61% had hypertension and half had heart failure. Valve surgery (55%) was the most common procedure ($n = 651$). Twenty-nine percent required > 1 procedure (eAppendix 1, available at doi:10.12788/fp.0300).

The operative mortality for the entire prolonged ICU stay group was 11%, with progressive increases in mortality as ICU stay increased 18%, 22%, and 35% for the ≥ 14 , ≥ 21 , and ≥ 28 day groups, respectively (Table 1). Univariate analysis demonstrated that survivors were younger and less likely to have comorbidities. Survivors also were less likely to have had valve surgery, require vasopressors, ventilator support, or renal replacement therapy on day 7 (Table 2). At day 14, survivors were more likely to be male, to have ventricular-assist device surgery, and were less likely to have valve surgery (eAppendix 2, available at doi:10.12788/fp.0300). At day 21, survivors were more likely to have presented with cardiogenic shock or heart failure; however, they were also more likely to receive a ventricular-assist device (eAppendix 3, available at doi:10.12788/fp.0300). Similarly, at day 28 operative survivors were more likely to have received a ventricular assist device (eAppendix 4, available at doi:10.12788/fp.0300).

FIGURE 1 Odds Ratio (95% CI) for Operative Mortality for Patients Receiving Mechanical Ventilation on Day of Analysis

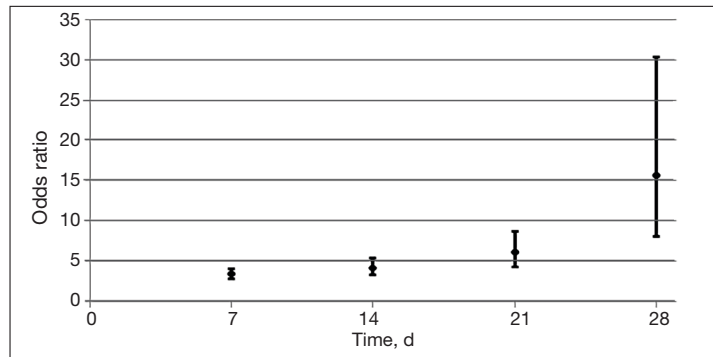
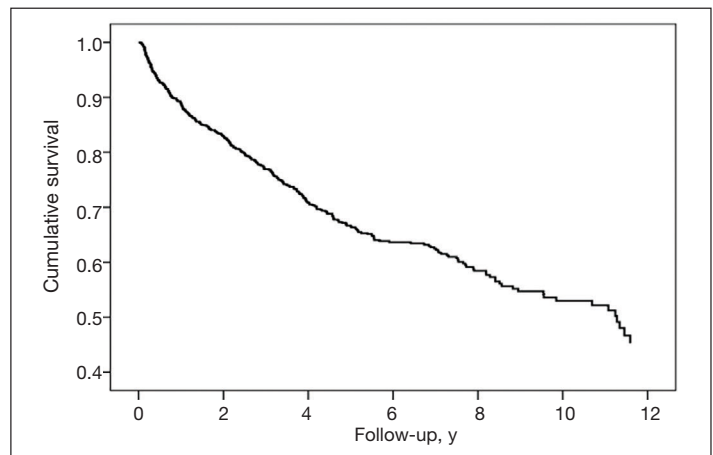
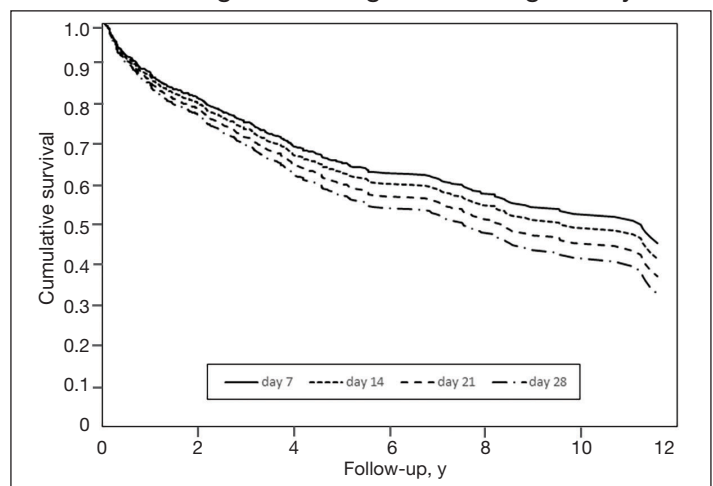


FIGURE 2 Cox Regression for Long-Term Survival in All Patients With Prolonged ICU Surviving to Discharge



Abbreviation: ICU, intensive care unit.

FIGURE 3 Cox Regression for Long-Term Survival in ICU Patients Surviving to Discharge for Prolonged Stays



Abbreviation: ICU, intensive care unit.

TABLE 1 Mortality for Patients With Prolonged ICU Stay After Cardiac Surgery

Length of stay, d	Patients, No.	Operative mortality, No. (%)	Total mortality, No. (%)
≥ 7	1174	125 (11)	420 (36)
≥ 14	386	70 (18)	158 (41)
≥ 21	201	44 (22)	96 (48)
≥ 28	80	28 (35)	41 (51)

Abbreviation: ICU, intensive care unit.

TABLE 2 Univariate Analysis of Significant Preoperative Factors Associated With Mortality for Patients With Intensive Care Unit Stays ≥ 7 Days^a

Variables	At discharge			At follow-up		
	Survived (n = 1049)	Deceased (n = 125)	P value	Survived (n = 754)	Deceased (n = 420)	P value
Preoperative						
Smoker, No. (%)				261 (35)	211 (50)	< .001
Diabetes mellitus, No. (%)				190 (25)	141 (34)	.003
Renal failure, No. (%)	268 (26)	44 (35)	.02			
Dialysis, No. (%)	58 (6)	15 (12)	.01			
Hypertension, No. (%)				478 (63)	292 (70)	.04
Infectious endocarditis, No. (%)	88 (9)	19 (15)	.02			
Peripheral vascular disease, No. (%)	120 (11)	23 (18)	.03	73 (10)	70 (17)	.001
Age, mean (SD), y	61 (14)	64 (12)	.02	59 (14)	65 (13)	<.001
Weight, mean (SD), kg,				86 (23)	82 (22)	<.001
Body mass index, mean (SD)				27.8 (7.1)	26.3 (6.7)	<.001
Creatinine, mean (SD), mg/dL				1.46 (1.26)	1.71 (1.58)	.04
Hemoglobin, mean (SD), g/dL				12.0 (2.3)	11.5 (2.2)	.004
Hematocrit, mean (SD), %				35.5 (6.7)	34.1 (6.5)	.01
Operative						
Coronary artery bypass grafting, No. (%)				148 (20)	111 (26)	.008
Valve procedure, No. (%)	566 (54)	85 (68)	.003			
Ventricular-assist device procedure, No. (%)	200 (19)	13 (10)	.02			
Transplant procedure, No. (%)				72 (10)	20 (5)	.003
Perfusion time, mean (SD), min	160 (88)	180 (105)	.046			
Intraoperative cryoprecipitate transfusion, median (IQR)	0 (0-0)	0 (0-0)	.02			
Postoperative day 7						
Vasopressor, No. (%)	99 (16)	27 (33)	< .001			
Ventilator support, No. (%)	234 (22)	60 (48)	< .001			
Renal replacement therapy, No. (%)	65 (6)	19 (15)	.001			
Postoperative pneumonia, No. (%)				118 (18)	117 (29)	< .001
Hematocrit, mean (SD), %	29.9 (4.6)	29.8 (4.5)	.91	29.5 (4.4)	30.7 (4.8)	.001
Bilirubin, mean (SD), mg/dL	1.7 (2.5)	4.3 (7.3)	.01			
Alanine transaminase, mean (SD), U/L	125 (4.3)	248 (423)	.03			
White blood cells, mean (SD), 10 ³ /μL	12.1 (5.0)	16.5 (9.6)	< .001			

^aData not available for all variables for all patients; for continuous variables with data missing, available data used from total number of patients for survival at discharge, mortality at discharge, survival at follow-up, mortality at follow-up: age, weight, body mass index (1049, 125, 754, 420, respectively); creatinine, hemoglobin, hematocrit (625, 82, 478, 229, respectively); perfusion time (1006, 118, 724, 400, respectively); day 7 creatinine, sodium, chloride, white blood cells (624, 81, 476, 229, respectively); d 7 hemoglobin (622, 80, 474, 228, respectively), d 7 hematocrit (622, 81, 223, 61, respectively), d 7 bilirubin, alanine transaminase, alkaline phosphatase (481, 64, 376, 169, respectively).

Using multivariable logistic regression to adjust for factors associated with mortality, we found that receiving mechanical ventilation on the day of analysis was associated with increased operative mortality with AOR increasing from 3.35 (95% CI, 2.82-3.98) for day 7, to 4.19 (95% CI, 3.25-5.41) for day 14, to 6.06 (95% CI, 4.25-8.62) for day 21, to 15.68 (95% CI, 8.11-30.13) for day 28; all *P* values

< .001 (Figure 1). Use of vasopressors was associated with an increased operative mortality only for the day 7 group, AOR 2.15 (95% CI, 1.17-2.70), *P* < .001. For days 7, 14, and 28, severe or moderate chronic lung disease was associated with increased AOR of operative mortality: 2.19 (95% CI, 1.52-3.14; *P* < .001) for day 7, 2.73 (95% CI, 1.99-3.75; *P* < .001) for day 14, and 37.02 (95% CI, 13.57-100.99;

$P < .001$) for day 28 (Table 3). Of the 1049 (89%) hospital survivors, 420 (40%) died by late follow-up (Figure 2). Median (IQR) Cox model survival was 10.7 (0.7) years for all hospital survivors; however, long-term survival varied by ICU length of stay (Figure 3). Longer ICU stays were associated with higher late mortality: 36% for ≥ 7 days, 41% for ≥ 14 days, 48% for 21 days, and 51% for ≥ 28 days ($P < .001$). Univariate analysis demonstrated that survivors were less likely to have comorbidities or to be ever smokers. Survivors were younger and less likely to have a coronary artery bypass graft and more likely to have transplant surgery compared with patients who died.

After multivariable Cox regression to adjust for confounders, we found that each postoperative week was associated with a 7% higher hazard of dying (HR, 1.07; 95% CI, 1.07-1.07; $P < .001$). Postoperative pneumonia was also associated with increased hazard of dying (HR, 1.59; 95% CI, 1.27-1.99; $P < .001$), as was elevated blood urea nitrogen. In contrast higher discharge platelet count and cardiac transplant were protective factors (Table 4).

DISCUSSION

We found that operative mortality increased the longer the patient stayed in the ICU, ranging from 11% for ≥ 7 days to 35% for ≥ 28 days. We further found that in ICU survivors, median (IQR) survival was 10.7 (0.7) years. While previous studies have evaluated prolonged ICU stays, they have been limited by studying limited subpopulations, such as patients who are dependent on dialysis or octogenarians, or used a single cutoff to define prolonged ICU stays, variably defined from > 48 hours to > 14 days.^{2-7,9-12,22} Our study is similar to others that used ≥ 2 cutoffs.^{1,8} However, our study was novel by providing 4 cutoffs to improve temporal prediction of hospital outcomes. Unlike a study by Ryan and colleagues, which found no increase in mortality with longer stay (43.5% for ≥ 14 days and 45% for ≥ 28 days), our study findings are similar to those of Yu and colleagues (11.1% mortality for prolonged ICU stays of 1 to 2 weeks, 26.6% for 2 to 4 weeks, and 31% for > 4 weeks) and others (8%, 3 to 14 days; 40%, >14 days; 10%, 1 to 2 weeks; 25.7% > 2 weeks) in finding a progressively increased hospital mortality with longer ICU stays.^{1,4,5,8} These differences may be related to

TABLE 3 Multivariate Analyses for Significant Factors Associated With Operative Mortality in Prolonged Intensive Care Unit Stays^a

Prolonged ICU	Odds ratio (95% CI)	P value
Day 7		
Prior stroke	1.41 (1.10-1.80)	.006
Chronic lung disease, mild	0.72 (0.57-0.92)	.009
Chronic lung disease, moderate or severe	2.19 (1.52-3.14)	$< .001$
Hypothermic circulatory arrest	0.47 (0.36-0.61)	$< .001$
Vasopressor use	2.15 (1.71-2.70)	$< .001$
Mechanical ventilation	3.35 (2.82-3.98)	$< .001$
White blood cell count $> 13,100/\mu\text{L}$	2.47 (1.92-3.18)	$< .001$
White blood cell count missing	1.43 (1.11-1.85)	.006
Day 14		
Valve surgery	1.45 (1.09-1.92)	.01
Ventricular-assist device surgery	0.36 (0.24-0.56)	$< .001$
Prior stroke	1.66 (1.20-2.29)	.002
Chronic lung disease, mild	1.23 (1.04-2.24)	.03
Chronic lung disease, moderate or severe	2.73 (1.99-3.75)	$< .001$
Mechanical ventilation	4.19 (3.25-5.41)	$< .001$
Hemoglobin ≥ 9.2 g/dL	0.28 (0.14-0.57)	$< .001$
Alkaline phosphatase 90-138 U/L	3.57 (2.25-5.66)	$< .001$
Day 21		
Mechanical ventilation	6.06 (4.25-8.62)	$< .001$
Sodium > 139 mEq/L	0.21 (0.13-0.36)	$< .001$
Bilirubin 0.7-1.2 mg/dL	7.29 (3.86-13.76)	$< .001$
Bilirubin missing	0.50 (0.26-0.97)	.04
Day 28		
Infectious endocarditis	27.85 (9.54-81.33)	$< .001$
Mechanical ventilation	15.68 (8.11-30.31)	$< .001$
Sodium 137-139 mEq/L	.004 (0.001-0.02)	$< .001$
Sodium > 139 mEq/L	0.11 (0.04-0.33)	$< .001$
Sodium missing	0.07 (0.02-0.27)	$< .001$
Hemoglobin 9-10.1 g/dL	4.00 (1.21-13.21)	.02
Chronic lung disease, mild	2.72 (1.13-6.56)	.03
Chronic lung disease, moderate or severe	37.02 (13.57-100.99)	$< .001$

Abbreviation: ICU, intensive care unit.

^aLogistic regression showing factors associated with operative mortality in patients with ≥ 7 ICU d mortality was 125 of 1174 (11%), c-statistic (SEM) = 0.722 (0.010); ≥ 14 ICU d mortality was 70 of 386 (18%), c-statistic (SEM) = 0.750 (0.014); ≥ 21 ICU d mortality was 44 of 201 (22%), c-statistic (SEM) = 0.742 (0.020); ≥ 28 ICU d, mortality was 28 of 80 (35%), c-statistic (SEM) = 0.889 (0.017).

different ICU populations or to improvements in care since Ryan and colleagues study was conducted.

Fewer studies have evaluated factors associated with mortality in cardiac surgery prolonged ICU stay patients. Our study is similar to other studies that evaluated risk factors by finding associations between a variety of comorbidities and process of care associated with both operative and long-term mortality; however, comparison between these studies is limited by the varying factors analyzed.^{1,3,5,6,8,9,11} We found that mechanical ventilation on days 7, 14, 21, and 28 was strongly associated

TABLE 4 Cox Regression Showing Factors Associated With Late Mortality in Patients Who Survived to Hospital Discharge

Factors	Odds ratio (95% CI)	P value
Transplant surgery	0.32 (0.19-0.54)	< .001
Smoke	1.34 (1.09-1.66)	.005
Body mass index	1.00 (0.99-1.00)	.002
Chronic lung disease		
Mild	1.39 (1.04-1.85)	.02
Moderate	1.59 (1.10-2.29)	.01
Severe	1.64 (1.05-2.58)	.03
Postoperative pneumonia	1.59 (1.27-1.99)	< .001
Postoperative ICU, length of stay/wk	1.07 (1.07-1.07)	< .001
Discharge day levels		
Alanine transaminase > 57 U/L	0.52 (0.35-0.77)	.001
Urea nitrogen > 35 mg/dL	2.15 (1.50-3.07)	< .001
Chloride 101-104 mmol/L	0.63 (0.49-0.89)	.01
Chloride >104 mmol/L	0.66 (0.48-0.92)	.01
Platelet > 321×103/μL	0.41 (0.28-0.59)	< .001

Abbreviation: ICU, intensive care unit.

*Mortality: 420 of 1049 (40%); Harrell c-statistic (SEM) = 0.757 (0.030).

with operative mortality, similar to noncardiac surgery patients and cardiac surgery patients.^{6,23,24} While we found several processes of care, such as catecholamine use and transfusions to be associated with mortality, which is similar to other studies, notably, we did not find an association between renal replacement therapy and mortality.^{1,25} While there is an association between renal replacement therapy and mortality in ICU patients, its status in cardiac surgery patients with prolonged ICU stays is less clear.²⁶ While Ryan and colleagues found an association between renal replacement therapy and hospital mortality in patients staying ≥ 14 days, they did not find it in patients staying ≥ 28 days.¹ Other studies of prolonged ICU stays for cardiac surgery patients have also failed to find an association between renal replacement therapy and mortality.^{5,6,9} Importantly, practice that expedites liberation from mechanical ventilation, such as fast tracking, daily spontaneous breathing trials, extubation to noninvasive respiratory support, and pulmonary rehabilitation may all have potential to limit mechanical ventilation duration and improve hospital survival and deserve further study.²⁷⁻²⁹

Median (IQR) survival in hospital survivors was 10.7 (0.7) years, which is generally better than previously reported, but similar to that re-

ported by Silberman and colleagues.^{2,4,6,8,11,12} Differences between these studies may relate to different patient populations within the cardiac surgery ICUs, definitions of prolonged ICU stays, or eras of care. Further study is needed to clarify these discrepancies. We found that cardiac transplantation and obesity were associated with the least risk of dying, while smoking, lung disease, and postoperative pneumonia were independently associated with increased hazard of dying. The obesity paradox, where obesity is protective, has been previously observed in cardiac surgery patients.³⁰

Strengths and Limitations

There are several limitations of this study. This is a single center study, and our patient population and processes of care may differ from other centers, limiting its generalizability. Notably, we do fewer coronary bypass operations and more aortic reconstructions and ventricular assist device insertions than do many other centers. Second, we did not have laboratory values for about one-third of patients (preceded EHR implementation). However, we were able to compensate for this by binning values and including missing data as an extra bin.^{20,21}

The main strength of this study is that we were able to combine disparate records to assess a large number of potential factors associated with both operative and long-term mortality. This produced models that had good to very good discrimination. By producing models at 7, 14, 21, and 28 days to predict operative mortality and a model at discharge, it may help to provide objective data to facilitate conversations with patients and their families. However, further studies to externally validate these models should be conducted.

CONCLUSIONS

We found that longer prolonged ICU stays are associated with both operative and late mortality. Receiving mechanical ventilation on days 7, 14, 21, or 28 was strongly associated with operative mortality.

Author affiliations

^aUniversity of Michigan, Ann Arbor, Michigan

^bVeterans Affairs Ann Arbor Healthcare System, Ann Arbor, Michigan

^cMedical College of Wisconsin, Wauwatosa, Wisconsin

^dPromedica Toledo Hospital, Toledo, Ohio

Author disclosures

The authors report no actual or potential conflicts of interest or outside sources of funding with regard to this article.

Disclaimer

The opinions expressed herein are those of the authors and do not necessarily reflect those of *Federal Practitioner*, Frontline Medical Communications Inc., the US Government, or any of its agencies.

Ethics and consent

This study was approved by the University of Michigan Health System Institutional Review Board (HUM00086820 5/20/2014), which waived informed consent.

References

- Ryan TA, Rady MY, Bashour A, Leventhal M, Lytle B, Starr NJ. Predictors of outcome in cardiac surgical patients with prolonged intensive care stay. *Chest*. 1997;112(4):1035-1042. doi:10.1378/chest.112.4.1035
- Hein OV, Birnbaum J, Wernecke K, England M, Konertz W, Spies C. Prolonged intensive care unit stay in cardiac surgery: risk factors and long-term-survival. *Ann Thorac Surg*. 2006;81(3):880-885. doi:10.1016/j.athoracsur.2005.09.077
- Mahesh B, Choong CK, Goldsmith K, Gerrard C, Nashef SA, Vuylsteke A. Prolonged stay in intensive care unit is a powerful predictor of adverse outcomes after cardiac operations. *Ann Thoracic Surg*. 2012;94(1):109-116. doi:10.1016/j.athoracsur.2012.02.010
- Silberman S, Bitran D, Fink D, Tauber R, Merin O. Very prolonged stay in the intensive care unit after cardiac operations: early results and late survival. *Ann Thorac Surg*. 2013;96(1):15-21. doi:10.1016/j.athoracsur.2013.01.103
- Lapar DJ, Gillen JR, Crosby IK, et al. Predictors of operative mortality in cardiac surgical patients with prolonged intensive care unit duration. *J Am Coll Surg*. 2013;216(6):1116-1123. doi:10.1016/j.jamcollsurg.2013.02.028
- Manji RA, Arora RC, Singal RK, et al. Long-term outcome and predictors of noninstitutionalized survival subsequent to prolonged intensive care unit stay after cardiac surgical procedures. *Ann Thorac Surg*. 2016;101(1):56-63. doi:10.1016/j.athoracsur.2015.07.004
- Augustin P, Tanaka S, Chhor V, et al. Prognosis of prolonged intensive care unit stay after aortic valve replacement for severe aortic stenosis in octogenarians. *J Cardiothorac Vasc Anesth*. 2016;30(6):1555-1561. doi:10.1053/j.jvca.2016.07.029
- Yu PJ, Cassiere HA, Fishbein J, Esposito RA, Hartman AR. Outcomes of patients with prolonged intensive care unit stay after cardiac surgery. *J Cardiothorac Vasc Anesth*. 2016;30(6):1550-1554. doi:10.1053/j.jvca.2016.03.145
- Bashour CA, Yared JP, Ryan TA, et al. Long-term survival and functional capacity in cardiac surgery patients after prolonged intensive care. *Crit Care Med*. 2000;28(12):3847-3853. doi:10.1097/00003246-200012000-00018
- Isgro F, Skuras JA, Kiessling AH, Lehmann A, Saggau W. Survival and quality of life after a long-term intensive care stay. *Thorac Cardiovasc Surg*. 2002;50(2):95-99. doi:10.1055/s-2002-26693
- Williams MR, Wellner RB, Hartnett EA, Hartnett EA, Thornton B, Kavarana MN, Mahapatra R, Oz MC, Sladen R. Long-term survival and quality of life in cardiac surgical patients with prolonged intensive care unit length of stay. *Ann Thorac Surg*. 2002;73(5):1472-1478.
- Lagercrantz E, Lindblom D, Sartipy U. Survival and quality of life in cardiac surgery patients with prolonged intensive care. *Ann Thorac Surg*. 2010;89:490-495. doi:10.1016/s0003-4975(02)03464-1
- Edwards FH, Clark RE, Schwartz M. Coronary artery bypass grafting: the Society of Thoracic Surgeons National Database experience. *Ann Thorac Surg*. 1994;57(1):12-19. doi:10.1016/0003-4975(94)90358-1
- Lawrence DR, Valencia O, Smith EE, Murday A, Treasure T. Parsonnet score is a good predictor of the duration of intensive care unit stay following cardiac surgery. *Heart*. 2000;83(4):429-432. doi:10.1136/heart.83.4.429
- Janssen DP, Noyez L, Wouters C, Brouwer RM. Preoperative prediction of prolonged stay in the intensive care unit for coronary bypass surgery. *Eur J Cardiothorac Surg*. 2004;25(2):203-207. doi:10.1016/j.ejcts.2003.11.005
- Nilsson J, Algotsson L, Högglund P, Luhrs C, Brandt J. EuroSCORE predicts intensive care unit stay and costs of open heart surgery. *Ann Thorac Surg*. 2004;78(5):1528-1534. doi:10.1016/j.athoracsur.2004.04.060
- Ghotkar SV, Grayson AD, Fabri BM, Dihmis WC, Pullan DM. Preoperative calculation of risk for prolonged intensive care unit stay following coronary artery bypass grafting. *J Cardiothorac Surg*. 2006;1:14. doi:10.1186/1749-8090-1-14
- Messaoudi N, Decocker J, Stockman BA, Bossaert LL, Rodrigus IE. Is EuroSCORE useful in the prediction of extended intensive care unit stay after cardiac surgery? *Eur J Cardiothoracic Surg*. 2009;36(1):35-39. doi:10.1016/j.ejcts.2009.02.007
- Ettema RG, Peelen LM, Schuurmans MJ, Nierich AP, Kalkman CJ, Moons KG. Prediction models for prolonged intensive care unit stay after cardiac surgery: systematic review and validation study. *Circulation*. 2010;122(7):682-689. doi:10.1161/CIRCULATIONAHA.109.926808
- Engoren M. Does erythrocyte blood transfusion prevent acute kidney injury? Propensity-matched case control analysis. *Anesthesiology*. 2010;113(5):1126-1133. doi:10.1097/ALN.0b013e3181f70f56
- UK National Centre for Research Methods. Minimising the effect of missing data. Revised July 22, 2011. Accessed June 28, 2022. www.restore.ac.uk/srme/www/fac/soc/wie/research-new/srme/modules/mod3/9/index.html.
- Leontyev S, Davierwala PM, Gaube LM, et al. Outcomes of dialysis-dependent patients after cardiac operations in a single-center experience of 483 patients. *Ann Thorac Surg*. 2017;103(4):1270-1276. doi:10.1016/j.athoracsur.2016.07.052
- Freundlich RE, Maile MD, Sferra JJ, Jewell ES, Khetarpal S, Engoren M. Complications associated with mortality in the National Surgical Quality Improvement Program Database. *Anesth Analg*. 2018;127(1):55-62. doi:10.1213/ANE.00000000000002799
- Freundlich RE, Maile MD, Hajjar MM, et al. Years of life lost after complications of coronary artery bypass operations. *Ann Thorac Surg*. 2017;103(6):1893-1899. doi:10.1016/j.athoracsur.2016.09.048
- Koch CG, Li L, Sessler DI, et al. Duration of red-cell storage and complications after cardiac surgery. *N Engl J Med*. 2008;358(12):1229-1239. doi:10.1056/NEJMoa070403
- Truche AS, Ragey SP, Souweine B, et al. ICU survival and need of renal replacement therapy with respect to AKI duration in critically ill patients. *Ann Intensive Care*. 2018;8(1):127. doi:10.1186/s13613-018-0467-6
- Kollef MH, Shapiro SD, Silver P, et al. A randomized, controlled trial of protocol-directed versus physician-directed weaning from mechanical ventilation. *Crit Care Med*. 1997;25(4):567-574. doi:10.1097/00003246-199704000-00004
- McWilliams D, Weblin J, Atkins G, et al. Enhancing rehabilitation of mechanically ventilated patients in the intensive care unit: a quality improvement project. *J Crit Care*. 2015;30(1):13-18. doi:10.1016/j.jcrc.2014.09.018
- Hernandez G, Vaquero C, Gonzalez P, et al. Effect of postextubation high-flow nasal cannula vs conventional oxygen therapy on reintubation in low-risk patients: a randomized clinical trial. *JAMA*. 2016;315(13):1354-1361. doi:10.1001/jama.2016.2711
- Schwann TA, Ramira PS, Engoren MC, et al. Evidence and temporality of the obesity paradox in coronary bypass surgery: an analysis of cause-specific mortality. *Eur J Cardiothorac Surg*. 2018;54(5):896-903. doi:10.1093/ejcts/eyz207

eAPPENDIX 1 Univariate Analysis of Factors Associated With Mortality for Patients With Intensive Care Unit Length of Stay ≥ 7 Days^a

Variables	At discharge			At follow-up		
	Survived (n = 1049)	Deceased (n = 125)	P value	Survived (n = 754)	Deceased (n = 420)	P value
Preoperative	No. (%)	No. (%)		No. (%)	No. (%)	
Sex, male	654 (62)	69 (55)	.14	470 (62)	253 (60)	.49
Race, White	889 (85)	102 (82)	.36	632 (84)	359 (86)	.50
Smoker	416 (40)	56 (45)	.29	261 (35)	211 (50)	< .001
Diabetes mellitus	287 (27)	44 (35)	.07	190 (25)	141 (34)	.003
Renal failure	268 (26)	44 (35)	.02	188 (25)	124 (30)	.01
Dialysis	58 (6)	15 (12)	.01	41(5)	32 (8)	.17
Hypertension	689 (66)	81 (65)	.84	478 (63)	292 (70)	.04
Cerebrovascular accident	93 (9)	17 (13)	.10	65 (9)	45 (11)	.25
Cerebrovascular disease	159 (15)	31 (25)	.01	115 (15)	75 (18)	.25
Infectious endocarditis	88 (9)	19 (15)	.02	62 (8)	45 (11)	.17
Chronic lung disease			.01			.07
Mild	130 (12)	18 (14)		86 (11)	62 (15)	
Moderate or severe	120 (11)	25 (20)		86 (11)	59 (14)	
Peripheral vascular disease	120 (11)	23 (18)	.03	73 (10)	70 (17)	.001
Myocardial infarction	321 (31)	38 (30)	.99	212 (28)	147 (35)	.02
Congestive heart failure	530 (51)	64 (51)	.93	365 (48)	229 (55)	.05
Cardiogenic shock	129 (12)	15 (12)	.99	100 (13)	44 (11)	.19
Resuscitation	8 (1)	2 (2)	.29	7 (1)	3 (1)	.99
Preoperative	Mean (SD)	Mean (SD)		Mean (SD)	Mean (SD)	
Age, y	61 (14)	64 (12)	.02	59 (14)	65 (13)	< .001
Weight, kg	85.1 (22.9)	85.2 (22.1)	.93	86.2 (23.0)	81.9 (22.1)	< .001
Body mass index	27.3 (6.9)	27.5 (7.2)	.74	27.8 (7.1)	26.3 (6.7)	< .001
Ejection fraction	41 (21)	43 (19)	.25	41 (21)	41 (21)	.77
Creatinine, mg/dL	1.50 (1.31)	1.85 (1.77)	.09	1.46 (1.26)	1.71 (1.58)	.04
Bilirubin, mg/dL	0.8 (1.1)	1.7 (4.7)	.09	0.9 (2.0)	0.9 (1.6)	.68
Hemoglobin, g/dL	11.8 (2.3)	11.4 (2.5)	.08	12.0 (2.3)	11.5 (2.2)	.004
Hematocrit, %	35.1 (6.6)	34.2 (7.0)	.23	35.5 (6.7)	34.1 (6.5)	.01
White blood cells, 10 ³ /μL	9.1 (4.7)	10.4 (9.5)	.23	9.4 (5.8)	9.0 (4.8)	.37
Operative	No. (%)	No. (%)		No. (%)	No. (%)	
Procedures						
Coronary artery bypass grafting	233 (22)	26 (21)	.82	148 (20)	111 (26)	.008
Valve	566 (54)	85 (68)	.003	408 (54)	243 (58)	.22
Aortic	310 (30)	29 (23)	.15	230 (31)	109 (26)	.11
Ventricular-assist device	200 (19)	13 (10)	.02	136 (18)	77 (18)	.94
Transplant	87 (8)	5 (4)	.11	72 (10)	20 (5)	.003
Other	30 (3)	8 (6)	.05	29 (4)	9 (2)	.12
Hypothermic circulatory arrest	174 (17)	12 (10)	.05	126 (17)	60 (14)	.32
No. procedures			.80			.71
1	710 (68)	87 (70)		510 (68)	287 (68)	
2	303 (29)	35 (28)		221 (29)	117 (28)	
3	36 (3)	3 (2)		23 (3)	16 (4)	
Return to operating room	20 (2)	0 (0)	.26	12 (2)	8 (2)	.82
Operative	Mean (SD)	Mean (SD)		Mean (SD)	Mean (SD)	
Cross-clamp, min	127 (71)	140 (87)	.19	130 (71)	127 (77)	.67
Perfusion, min	160 (88)	180 (105)	.046	163 (89)	160 (92)	.62
Operative	Median (IQR)	Median (IQR)		Median (IQR)	Median (IQR)	
Transfusion						
Red cell	4 (2-7)	5 (2-8)	.13	4 (2-7)	4 (2-8)	.12
Plasma	3 (0-7)	4 (0-7)	.33	4 (0-7)	3 (0-7)	.97
Platelet	2 (2-5)	2 (2-6)	.56	2 (2-5)	2 (2-5)	.33
Cryoprecipitate	0 (0-0)	0 (0-1)	.02	0 (0-1)	0 (0-1)	.78
Postoperative day 7	No. (%)	No. (%)		No. (%)	No. (%)	
Vasopressor	99 (16)	27 (33)	< .001	84 (18)	42 (18)	.83
Ventilator support	234 (22)	60 (48)	< .001	187 (25)	107 (26)	.83
Renal replacement therapy	65 (6%)	19 (15)	.001	51 (7)	33 (8)	.48
Transfusion						
Red cell	132 (21)	24 (29)	.12	105 (22)	51 (22)	.92
Plasma	62 (10)	10 (12)	.56	46 (10)	26 (11)	.51
Platelet	52 (8)	10 (12)	.27	38 (8)	24 (11)	.26
Cryoprecipitate transfusion	5 (1)	1 (1)	.52	5 (1)	1 (< 1)	.67
Pneumonia				118 (18)	117 (29)	< .001
Postoperative day 7	Mean (SD)	Mean (SD)		Mean (SD)	Mean (SD)	
Creatinine, mg/dL	1.68 (1.26)	1.94 (1.10)	.08	1.65 (1.18)	1.82 (1.36)	.10
Sodium, mmol/L	140 (5.9)	140 (6.6)	.83	140 (6)	140 (6)	.59
Chloride, mmol/L	105 (6.9)	104 (6.7)	.33	104 (7)	104 (7)	.85
Hemoglobin, g/dL	10.3 (2.2)	10.8 (4.0)	.11	10.3 (2.8)	10.6 (1.6)	.15
Hematocrit, %	29.9 (4.6)	29.8 (4.5)	.91	29.5 (4.4)	30.7 (4.8)	.001
Bilirubin, mg/dL	1.7 (2.5)	4.3 (7.3)	.01	2.0 (3.7)	2.0 (3.2)	.93
Alanine transaminase, U/L	125 (403)	248 (423)	.03	167 (478)	86 (144)	.004
Alkaline phosphatase, U/L	93 (57)	105 (90)	.14	96 (66)	92 (53)	.53
White blood cells, 10 ³ /μL	12.1 (5.0)	16.5 (9.6)	< .001	12.8 (6.1)	12.1 (5.5)	.16

^aData not available for all variables for all patients; for continuous variables with data missing, available data used from total no. patients for survival at discharge, mortality at discharge, survival at follow-up, mortality at follow-up: age, weight, body mass index (1049, 125, 754, 420, respectively); ejection fraction (989, 120, 705, 410, respectively); preop creatinine, bilirubin, hemoglobin, hematocrit, white blood cells (625, 82, 478, 229, respectively); cross-clamp time (753, 88, 557, 284, respectively); perfusion time (1006, 118, 724, 400, respectively); day 7 creatinine, sodium, chloride, white blood cells (624, 81, 476, 229, respectively); day 7 hemoglobin (622, 80, 474, 228, respectively); day 7 hematocrit (622, 81, 223, 61, respectively), day 7 bilirubin, alanine transaminase, alkaline phosphatase (481, 64, 376, 169, respectively).

eAPPENDIX 2 Univariate Analysis of Factors Associated With Operative and Late Mortality for Patients With Intensive Care Unit Length of Stay ≥ 14 Days^a

	At discharge			At follow-up		
Variables	Survived (n = 1049)	Deceased (n = 125)	P value	Deceased (n = 420)	Deceased (n = 420)	P value
Preoperative	No. (%)	No. (%)		No. (%)	No. (%)	
Sex, male	205 (65)	35 (50)	.03	142 (62)	98 (62)	.99
Race, White	258 (82)	57 (81)	.99	180 (79)	135 (85)	.11
Smoker	139 (44)	33 (47)	.69	96 (42)	76 (48)	.25
Diabetes mellitus	88 (28)	26 (37)	.15	57 (25)	57 (36)	.02
Renal failure	106 (34)	26 (37)	.58	80 (35)	52 (33)	.66
Dialysis	16 (5)	8 (11)	.06	14 (6)	10 (6)	.99
Hypertension	203 (64)	44 (63)	.89	138 (61)	109 (69)	.11
Cerebrovascular accident	34 (11)	12 (17)	.15	30 (13)	16 (10)	.43
Cerebrovascular disease	57 (18)	21 (30)	.03	44 (19)	34 (21)	.61
Infectious endocarditis	26 (8)	11 (16)	.07	18 (8)	19 (12)	.22
Chronic lung disease			.06			.98
Mild	39 (12)	9 (13)		28 (12)	20 (13)	
Moderate or severe	35 (11)	15 (21)		29 (13)	21 (13)	
Peripheral vascular disease	39 (12)	10 (14)	.69	19 (8)	30 (19)	.003
Myocardial infarction	110 (35)	20 (29)	.33	75 (33)	55 (35)	.74
Congestive heart failure	184 (58)	38 (54)	.59	126 (55)	96 (61)	.30
Cardiogenic shock	66 (21)	10 (14)	.28	53 (23)	23 (15)	.04
Resuscitation	6 (2)	2 (3)	.64	5 (2)	3 (2)	.99
Preoperative	Mean (SD)	Mean (SD)		Mean (SD)	Mean (SD)	
Age, y	62 (15)	63 (13)	.62	59 (15)	67 (12)	< .001
Weight, kg	84.0 (24.5)	86.0 (22.9)	.53	86.1 (24.2)	82.0 (24.1)	.10
Body mass index	26.6 (6.8)	28.4 (7.6)	.06	27.5 (7.1)	26.1 (6.6)	.08
Ejection fraction	38 (22)	43 (21)	.10	38 (22)	41 (21)	.30
Creatinine, mg/dL	1.55 (1.33)	2.13 (1.97)	.37	1.59 (1.30)	1.80 (1.78)	.34
Bilirubin, mg/dL	0.9 (1.0)	1.1 (1.2)	.14	0.8 (0.7)	1.0 (1.4)	.20
Hemoglobin, mg/dL	11.7 (2.6)	11.2 (2.3)	.25	11.9 (2.6)	11.1 (2.4)	.04
Hematocrit, %	34.5 (7.7)	33.5 (6.6)	.45	35.2 (7.6)	32.9 (7.0)	.04
White blood cells, 10 ³ /μL	10.1 (6.5)	11.0 (11.4)	.52	11.0 (8.3)	9.1 (6.5)	.09
Operative	No. (%)	No. (%)		No. (%)	No. (%)	
Procedure						
Coronary artery bypass grafting	62 (20)	13 (19)	.99	43 (19)	32 (20)	.79
Valve	154 (49)	45 (64)	.02	114 (50)	85 (48)	.47
Aortic	100 (32)	18 (26)	.39	69 (30)	49 (31)	.91
Ventricular-assist device	86 (27)	7 (10)	.002	56 (25)	38 (23)	.81
Transplant	22 (7)	4 (6)	.99	17 (8)	9 (6)	.54
Other	9 (3)	5 (7)	.15	12 (5)	2 (1)	.05
Hypothermic circulatory arrest	53 (17)	9 (13)	.48	36 (16)	26 (17)	.89
No. procedures			.78			.98
1	212 (67)	50 (71)		155 (68)	107 (68)	
2	93 (29)	18 (26)		65 (29)	46 (29)	
3	11 (4)	2 (3)		8 (4)	5 (3)	
Return to operating room	17 (5)	0 (0)	.05	10 (4)	7 (4)	.99
Operative	Mean (SD)	Mean (SD)		Mean (SD)	Mean (SD)	
Cross-clamp, min	134 (73)	148 (89)	.26	133 (73)	144 (80)	.28
Perfusion, min	188 (96)	168 (101)	.15	171 (101)	173 (99)	.81
Operative	Median (IQR)	Median (IQR)		Median (IQR)	Median (IQR)	
Transfusion						
Red cell	6 (3-8)	5.5 (2-9)	.91	5 (2-8)	6 (3-9)	.10
Plasma	4 (1-8)	4.5 (1-7)	.94	4 (0-8)	4 (2-8)	.30
Platelet	3 (0-6)	4 (1-6)	.36	3 (0-5)	4 (1-7)	.15
Cryoprecipitate	0 (0-1)	0 (0-2)	.19	0 (0-1)	0 (0-2)	.08
Postoperative day 14	No. (%)	No. (%)		No. (%)	No. (%)	
Vasopressor	32 (20)	14 (34)	.06	29 (23)	17 (23)	.99
Ventilator support	51 (16)	29 (41)	< .001	52 (23)	28 (18)	.25
Renal replacement therapy	41 (13)	14 (20)	.13	36 (16)	19 (12)	.37
Transfusion						
Red cell	51 (32)	15 (37)	.58	43 (34)	23 (31)	.76
Plasma	28 (18)	7 (17)	.99	23 (18)	12 (16)	.85
Platelet	21 (13)	6 (15)	.80	17 (14)	10 (14)	.99
Cryoprecipitate	4 (3)	1 (2)	.99	4 (3)	1 (1)	.65
Postoperative pneumonia				55 (32)	59 (41)	.13
Postoperative day 14	Mean (SD)	Mean (SD)		Mean (SD)	Mean (SD)	
Creatinine, mg/dL	1.89 (1.29)	2.03 (1.38)	.54	1.93 (1.38)	1.91 (1.17)	.94
Sodium, mmol/L	141 (6)	140 (6)	.16	141 (6)	141 (6)	.78
Chloride, mmol/L	107 (7)	103 (7)	.004	106 (7)	106 (8)	.76
Hemoglobin, g/dL	10.1 (1.5)	9.7 (1.3)	.20	9.9 (1.4)	10.2 (1.6)	.09
Hematocrit, %	29.3 (4.4)	28.3 (4.3)	.19	28.6 (4.3)	29.9 (4.5)	.05
Bilirubin, mg/dL	2.0 (2.3)	4.5 (6.2)	.03	2.6 (3.8)	2.4 (3.4)	.74
Alanine transaminase, U/L	106 (257)	283 (613)	.12	159 (370)	115 (376)	.50
Alkaline phosphatase (U/L)	147 (92)	126 (49)	.10	145 (86)	136 (83)	.56
White blood cells, 10 ³ /μL	15.2 (7.0)	23.6 (17.0)	.004	18.2 (11.9)	14.6 (6.4)	.007

^aData not available for all variables for all patients; for continuous variables with data missing, available data used from total no. patients for survival at discharge, mortality at discharge, survival at follow-up, mortality at follow-up: age, weight, body mass index (316, 70, 228, 158, respectively); ejection fraction (291, 67, 208, 150, respectively); preop creatinine, bilirubin, hemoglobin, hematocrit, white blood cells (159, 41, 126, 74, respectively); cross-clamp time (203, 51, 154, 150, respectively); perfusion time (299, 65, 213, 151, respectively); day 14 creatinine, sodium, chloride (155, 40, 124, 71, respectively), day 14 hemoglobin, white blood cells (155, 39, 124, 70, respectively); day 14 hematocrit (40, 15, 35, 19, respectively); day 14 bilirubin, alanine transaminase, alkaline phosphatase (113, 32, 97, 48, respectively).

eAPPENDIX 3 Univariate Analysis of Factors Associated With Operative and Late Mortality for Patients With Intensive Care Unit Length of Stay ≥ 21 Days^a

Variables	At discharge			At follow-up		
	Survived (n = 1049)	Deceased (n = 125)	P value	Survived (n = 754)	Deceased (n = 420)	P value
Preoperative	No. (%)	No. (%)		No. (%)	No. (%)	
Sex, male	103 (66)	23 (52)	.11	66 (63)	60 (63)	.99
Race, White	131 (83)	40 (91)	.34	89 (85)	82 (85)	.99
Smoker	69 (44)	22 (50)	.50	43 (41)	48 (50)	.21
Diabetes mellitus	46 (29)	15 (34)	.58	29 (28)	32 (33)	.44
Renal failure	56 (36)	14 (32)	.72	35 (33)	35 (37)	.66
Dialysis	12 (8)	4 (9)	.76	7 (7)	9 (9)	.60
Hypertension	98 (62)	28 (64)	.99	56 (53)	70 (73)	.005
Cerebrovascular accident	19 (12)	9 (21)	.22	17 (16)	11 (12)	.42
Cerebrovascular disease	32 (20)	15 (34)	.07	23 (22)	24 (25)	.62
Infectious endocarditis	12 (8)	8 (18)	.049	7 (7)	13 (14)	.16
Chronic lung disease			.09			.51
Mild	22 (14)	8 (18)		17 (16)	13 (14)	
Moderate or severe	15 (10)	9 (21)		10 (10)	14 (15)	
Peripheral vascular disease	13 (8)	7 (16)	.16	8 (8)	12 (13)	.35
Myocardial infarction	51 (33)	12 (27)	.58	31 (30)	32 (33)	.74
Congestive heart failure	99 (63)	20 (46)	.04	59 (56)	60 (63)	.39
Cardiogenic shock	35 (22)	3 (7)	.03	26 (25)	12 (13)	.03
Resuscitation	4 (3)	1 (2)	.99	3 (3)	2 (2)	.99
Preoperative	Mean (SD)	Mean (SD)		Mean (SD)	Mean (SD)	
Age, y	62 (15)	63 (12)	.73	59 (16)	67 (12)	
Weight, kg	84.4 (26.6)	86.9 (21.0)	.56	87.9 (25.0)	81.7 (25.6)	.08
Body mass index	26.2 (6.5)	28.8 (7.7)	.03	27.6 (7.1)	25.9 (6.4)	.07
Ejection fraction	37 (23)	44 (22)	.09	38 (23)	39 (22)	.72
Creatinine, mg/dL	1.71 (1.69)	1.99 (1.50)	.45	1.70 (1.20)	1.89 (2.06)	.56
Bilirubin, mg/dL	0.8 (1.0)	1.1 (1.3)	.34	0.7 (0.5)	1.1 (1.5)	.11
Hemoglobin, g/dL	11.5 (2.6)	11.1 (2.4)	.48	11.8 (2.5)	11.0 (2.6)	.11
Hematocrit, %	34.2 (7.7)	33.6 (7.0)	.70	35.2 (7.1)	32.6 (7.8)	.08
White blood cells, 10 ³ / μ L	9.9 (6.6)	9.5 (4.2)	.78	10.1 (4.9)	9.4 (7.2)	.55
Operative	No. (%)	No. (%)		No. (%)	No. (%)	
Procedure						
Coronary artery bypass grafting	27 (17)	7 (16)	.99	18 (17)	16 (17)	.99
Valve	69 (44)	29 (66)	.01	48 (46)	50 (52)	.40
Aortic	45 (29)	13 (30)	.99	28 (27)	30 (31)	.53
Ventricular-assist device	51 (33)	4 (9)	.002	31 (30)	24 (25)	.53
Transplant	12 (8)	4 (9)	.76	9 (9)	7 (7)	.80
Other	4 (3)	2 (5)	.61	5 (5)	1 (1)	.22
Hypothermic circulatory arrest	19 (12)	9 (21)	.22	12 (11)	16 (17)	.31
No. procedures			.26			.31
1	113 (72)	29 (66)		74 (71)	68 (71)	
2	39 (25)	15 (34)		30 (29)	24 (25)	
3	5 (3)	0 (0)		1 (1)	4 (4)	
Return to operating room	13 (8)	0 (0)	.08	8 (8)	5 (5)	.57
Operative	Mean (SD)	Mean (SD)		Mean (SD)	Mean (SD)	
Cross-clamp, min	128 (70)	172 (91)	.006	132 (71)	149 (86)	.22
Perfusion, min	158 (87)	205 (100)	.003	162 (83)	176 (99)	.31
Operative	Median (IQR)	Median (IQR)		Median (IQR)	Median (IQR)	
Transfusion						
Red cell	6 (2-9)	5.5 (2-8)	.86	5 (2-8)	6.5 (3-10)	.04
Plasma	4 (0-9)	4 (1-8)	.76	4 (0-9)	4.5 (0-9)	.36
Platelet	2 (1-6)	3 (0-6)	.86	2 (0-5)	4 (1-8)	.05
Cryoprecipitate	0 (0-1)	0 (0-2)	.55	0 (0-1)	0 (0-2)	.08
Postoperative day 21	No. (%)	No. (%)		No. (%)	No. (%)	
Vasopressor	20 (27)	9 (32)	.63	18 (33)	11 (24)	.38
Ventilator support	23 (15)	19 (43)	<.001	25 (24)	17 (18)	.30
Renal replacement therapy	19 (12)	11 (25)	.05	20 (19)	10 (10)	.11
Transfusion						
Red cell	29 (40)	12 (43)	.82	25 (46)	16 (35)	.31
Plasma	18 (25)	4 (14)	.30	14 (26)	8 (17)	.35
Platelet	13 (18)	4 (14)	.77	8 (15)	9 (20)	.60
Cryoprecipitate	4 (6)	0 (0)	.57	3 (6)	1 (2)	.62
Postoperative pneumonia				23 (32)	37 (44)	.14
Postoperative	Mean (SD)	Mean (SD)		Mean (SD)	Mean (SD)	
Creatinine, mg/dL	1.63 (1.25)	2.09 (1.48)	.15	1.80 (1.45)	1.73 (1.16)	.79
Sodium, mmol/L	142 (6)	141 (5)	.40	141 (6)	142 (6)	.53
Chloride, mmol/L	107 (6)	105 (5)	.16	106 (6)	107 (6)	.66
Hemoglobin, g/dL	9.8 (3.0)	9.4 (1.3)	.47	9.4 (1.2)	10.0 (3.8)	.29
Hematocri, %	28.1 (4.5)	27.6 (4.0)	.53	27.3 (4.0)	29.1 (4.7)	.02
Bilirubin, mg/dL	1.6 (1.6)	2.6 (3.8)	.20	2.0 (2.5)	2.0 (3.0)	.95
Alanine transaminase, U/L	71 (66)	83 (109)	.56	87 (101)	56 (42)	.07
Alkaline phosphatase, U/L	146 (95)	134 (27)	.74	160 (95)	116 (66)	.11
White blood cells, 10 ³ / μ L	11.2 (4.6)	14.3 (5.2)	.006	12.2 (4.9)	12.2 (5.2)	.99

^aData not available for all variables for all patients; for continuous variables with data missing, available data used from total no. patients for survival at discharge, mortality at discharge, survival at follow-up, mortality at follow-up: age, weight, body mass index (157, 44, 105, 96, respectively); ejection fraction (149, 42, 99, 92, respectively); preop creatinine, bilirubin, hemoglobin, hematocrit, white blood cells (73, 28, 55, 46, respectively); cross-clamp time (90, 32, 66, 56, respectively); perfusion time (151, 42, 99, 94, respectively); day 21 creatinine (58, 26, 49, 35, respectively); day 21 sodium, chloride, white blood cells (65, 27, 53, 39, respectively); day 21 hemoglobin (65, 26, 52, 39, respectively); day 21 hematocrit (19, 11, 19, 11, respectively); day 21 bilirubin (45, 27, 45, 27, respectively); day 21 alanine transaminase, alkaline phosphatase (44, 27, 44, 27, respectively).

eAPPENDIX 4 Univariate Analysis of Factors Associated With Operative and Late Mortality for Patients With Intensive Care Unit Length of Stay ≥ 28 Days^a

	At discharge			At follow-up		
Variables	Survived (n = 1049)	Deceased (n = 125)	P value	Survived (n = 754)	Deceased (n = 420)	P value
Preoperative	No. (%)	No. (%)		No. (%)	No. (%)	
Sex, male	28 (54)	11 (39)	.25	21 (54)	18 (44)	.50
Race, White	45 (87)	26 (93)	.48	34 (87)	37 (90)	.73
Smoker	25 (48)	16 (57)	.49	17 (44)	24 (59)	.26
Diabetes mellitus	13 (25)	12 (43)	.13	13 (33)	12 (29)	.81
Renal failure	19 (37)	9 (32)	.81	13 (33)	15 (37)	.82
Dialysis	4 (8)	3 (11)	.69	2 (5)	5 (12)	.43
Hypertension	33 (64)	19 (68)	.81	22 (56)	30 (73)	.16
Cerebrovascular accident	5 (10)	5 (18)	.31	5 (13)	5 (12)	.99
Cerebrovascular disease	10 (19)	9 (32)	.27	8 (21)	11 (27)	.60
Infectious endocarditis	2 (4)	6 (21)	.02	4 (10)	4 (10)	.99
Chronic lung disease			.01			.44
Mild	5 (10)	4 (14)		5 (13)	4 (10)	
Moderate or severe	2 (4)	7 (25)		6 (15)	3 (7)	
Peripheral vascular disease	3 (6)	4 (14)	.23	3 (8)	4 (10)	.99
Myocardial infarction	16 (31)	7 (25)	.80	12 (31)	11 (27)	.81
Congestive heart failure	34 (65)	14 (50)	.23	22 (56)	26 (63)	.65
Cardiogenic shock	13 (25)	2 (7)	.07	10 (26)	5 (12)	.16
Resuscitation	1 (2)	1 (4)	.99	2 (5)	0 (0)	.23
Preoperative	Mean (SD)	Mean (SD)		Mean (SD)	Mean (SD)	
Age, y	62 (16)	63 (11)	.72	59 (16)	65 (12)	.05
Weight, kg	77.9 (28.0)	81.6 (17.8)	.53	84.7 (26.4)	74.0 (22.3)	.05
Body mass index	25.6 (6.6)	26.8 (5.5)	.39	27.3 (6.5)	24.9 (5.9)	.08
Ejection fraction	40 (23)	43 (23)	.59	39 (24)	43 (21)	.42
Creatinine, mg/dL	1.70 (1.16)	1.87 (1.23)	.65	1.76 (1.13)	1.78 (1.24)	.95
Bilirubin, mg/dL	0.6 (0.4)	1.0 (1.3)	.22	0.6 (0.5)	0.9 (1.1)	.33
Hemoglobin, g/dL	11.5 (2.0)	11.3 (2.3)	.79	11.5 (2.4)	11.3 (1.8)	.71
Hematocrit, %	34.1 (6.0)	33.8 (6.4)	.84	34.3 (6.6)	33.7 (5.7)	.74
White blood cells, 10 ³ /μL	8.6 (3.8)	9.2 (3.8)	.62	8.8 (2.7)	8.9 (4.6)	.92
Operative	No. (%)	No. (%)		No. (%)	No. (%)	
Procedures						
Coronary artery bypass grafting	11 (21)	4 (14)	.56	7 (18)	8 (20)	.99
Valve	20 (39)	19 (68)	.02	18 (46)	21 (52)	.66
Aortic	10 (19)	7 (25)	.58	8 (21)	9 (22)	.99
Ventricular-assist device	18 (37)	2 (7)	.007	11 (28)	9 (22)	.61
Transplant	7 (14)	3 (11)	.99	6 (15)	4 (10)	.51
Other	0 (0)	2 (7)	.12	2 (5)	0 (0)	.23
Hypothermic circulatory arrest	7 (13)	7 (25)	.23	4 (10)	10 (24)	.14
No. procedures			.45			.34
1	40 (77)	19 (68)		27 (69)	32 (78)	
2	11 (21)	9 (32)		12 (31)	8 (20)	
3	1 (2)	0 (0)		0 (0)	1 (2)	
Return to operating room	7 (14)	0 (0)	.09	5 (13)	2 (5)	.26
Operative	Mean (SD)	Mean (SD)		Mean (SD)	Mean (SD)	
Cross-clamp, min	126 (69)	184 (103)	.03	146 (88)	154 (91)	.76
Perfusion, min	148 (78)	208 (113)	.01	170 (95)	166 (96)	.84
Operative	Median (IQR)	Median (IQR)		Median (IQR)	Median (IQR)	
Transfusion						
Red cell	7 (4-9)	5 (2-8.8)	.20	5 (2-8)	8 (6-10)	.003
Plasma	4 (1-10)	4 (1-8)	.33	4 (0-9)	4 (2-10)	.23
Platelet	3 (2-7)	3 (0-4)	.25	2 (0-5)	3 (2-8)	.17
Cryoprecipitate	0 (0-2)	0 (0-1)	.32	0 (0-1)	0 (0-2)	.25
Postoperative	No. (%)	No. (%)		No. (%)	No. (%)	
Vasopressor	3 (11)	4 (22)	.42	3 (14)	4 (17)	.99
Ventilator support	9 (17)	14 (50)	.004	13 (33)	10 (24)	.46
Renal replacement therapy	8 (15)	7 (25)	.37	9 (23)	6 (15)	.40
Transfusion						
Red cell	14 (54)	7 (39)	.37	10 (48)	11 (48)	.99
Plasma	5 (19)	3 (17)	.99	5 (24)	3 (13)	.45
Platelet	4 (15)	3 (17)	.99	3 (14)	4 (17)	.99
Cryoprecipitate	1 (4)	0 (0)	.99	0 (0)	1 (4)	.99
Postoperative pneumonia				9 (45)	17 (53)	.78
Postoperative	Mean (SD)	Mean (SD)		Mean (SD)	Mean (SD)	
Creatinine, mg/dL	1.66 (1.14)	1.88 (1.05)	.58	1.73 (1.01)	1.83 (1.20)	.79
Sodium, mmol/L	141 (4)	141 (4)	.96	141 (4)	141 (4)	.58
Chloride, mmol/L	104 (4)	102 (4)	.30	103 (4)	103 (4)	.69
Hemoglobin g/dL	9.5 (1.3)	9.6 (1.2)	.88	9.6 (1.2)	9.5 (1.3)	.84
Hematocrit, %	27.9 (3.4)	27.3 (3.1)	.62	27.6 (3.4)	27.7 (3.1)	.98
Bilirubin, mg/dL	0.8 (0.5)	3.3 (5.4)	.15	2.9 (5.1)	0.8 (0.5)	.18
Alanine transaminase, U/L	49 (37)	94 (122)	.25	83 (116)	54 (35)	.42
Alkaline phosphatase, U/L	131 (72)	133 (54)	.92	139 (66)	122 (62)	.44
White blood cells, 10 ³ /μL	11.6 (4.2)	11.9 (3.4)	.79	11.8 (3.6)	11.7 (4.0)	.91

^aData not available for all variables for all patients; for continuous variables with data missing, available data used from total no. patients for survival at discharge, mortality at discharge, survival at follow-up, mortality at follow-up: age, weight, body mass index (52, 28, 39, 41, respectively); ejection fraction (51, 28, 39, 40, respectively); preop creatinine, bilirubin, hemoglobin, hematocrit, white blood cells (26, 18, 21, 23, respectively); cross-clamp time (28, 19, 26, 21, respectively); perfusion time (51, 26, 36, 41, respectively); day 28 creatinine, sodium, chloride, hemoglobin, hematocrit, white blood cells (20, 17, 19, 18, respectively); day 28 bilirubin, alanine transaminase, alkaline phosphatase (14, 12, 14, 12, respectively).