

Early Physician Follow-Up Cuts Readmissions

BY JANE ANDERSON

FROM JAMA

Heart failure patients discharged from hospitals with high levels of early physician evaluation are less likely to be readmitted to the hospital within 30 days, according to an analysis of records on more than 30,000 heart failure patients from 225 hospitals.

However, most heart failure patients

do not visit a physician within 7 days of discharge.

The analysis of data from the American Heart Association's Get With The Guidelines-Heart Failure (GWTG-HF) Registry linked to Medicare billing records, which looked at hospital-level rates of early outpatient follow-up after discharge during 2003-2006, found that the median rate of follow-up within 7 days of discharge was 38%.

"For patients with heart failure, the transition from inpatient to outpatient care can be an especially vulnerable period because of the age of the patients, complex medical regimens, the large number of comorbid conditions, and the multiple clinicians who may be involved," wrote Dr. Adrian F. Hernandez of Duke University, Durham, N.C., and his coauthors. "Our findings highlight a need for improvement and greater uni-

formity in coordination of care from inpatient to outpatient settings."

Overall, about 21% of heart failure patients were readmitted to the hospital within 30 days of discharge. Patients in hospitals with higher rates of early follow-up had a lower risk of readmission, the study found (JAMA 2010;303:1716-22).

After adjustment for case mix, admission laboratory results, provision of discharge instructions, and length of stay,

Effient® (prasugrel) tablets Brief Summary of Prescribing Information

BRIEF SUMMARY: Please see Full Prescribing Information for additional information about Effient.

WARNING: BLEEDING RISK
Effient can cause significant, sometimes fatal, bleeding [see Warnings and Precautions (5.1 and 5.2) and Adverse Reactions (6.1)].

Do not use Effient in patients with active pathological bleeding or a history of transient ischemic attack or stroke [see Contraindications (4.1 and 4.2)].

In patients ≥75 years of age, Effient is generally not recommended, because of the increased risk of fatal and intracranial bleeding and uncertain benefit, except in high-risk situations (patients with diabetes or a history of prior MI) where its effect appears to be greater and its use may be considered [see Use in Specific Populations (8.5)].

Do not start Effient in patients likely to undergo urgent coronary artery bypass graft surgery (CABG). When possible, discontinue Effient at least 7 days prior to any surgery.

Additional risk factors for bleeding include:

- body weight <60 kg
- propensity to bleed
- concomitant use of medications that increase the risk of bleeding (e.g., warfarin, heparin, fibrinolytic therapy, chronic use of non-steroidal anti-inflammatory drugs [NSAIDs])

Suspect bleeding in any patient who is hypotensive and has recently undergone coronary angiography, percutaneous coronary intervention (PCI), CABG, or other surgical procedures in the setting of Effient.

If possible, manage bleeding without discontinuing Effient. Discontinuing Effient, particularly in the first few weeks after acute coronary syndrome, increases the risk of subsequent cardiovascular events [see Warnings and Precautions (5.3)].

1 INDICATIONS AND USAGE

1.1 Acute Coronary Syndrome: Effient® is indicated to reduce the rate of thrombotic cardiovascular (CV) events (including stent thrombosis) in patients with acute coronary syndrome (ACS) who are to be managed with percutaneous coronary intervention (PCI) as follows:

- Patients with unstable angina (UA) or non-ST-elevation myocardial infarction (NSTEMI).
- Patients with ST-elevation myocardial infarction (STEMI) when managed with primary or delayed PCI.

Effient has been shown to reduce the rate of a combined endpoint of cardiovascular death, nonfatal myocardial infarction (MI), or nonfatal stroke compared to clopidogrel. The difference between treatments was driven predominantly by MI, with no difference on strokes and little difference on CV death [see Clinical Studies (14)]. It is generally recommended that antiplatelet therapy be administered promptly in the management of ACS because many cardiovascular events occur within hours of initial presentation. In the clinical trial that established the efficacy of Effient, Effient and the control drug were not administered to UA/NSTEMI patients until coronary anatomy was established. For the small fraction of patients that required urgent CABG after treatment with Effient, the risk of significant bleeding was substantial [see Warnings and Precautions (5.2)]. Because the large majority of patients are managed without CABG, however, treatment can be considered before determining coronary anatomy if need for CABG is considered unlikely. The advantages of earlier treatment with Effient must then be balanced against the increased rate of bleeding in patients who do need to undergo urgent CABG.

2 DOSAGE AND ADMINISTRATION

Initiate Effient treatment as a single 60 mg oral loading dose and then continue at 10 mg orally once daily. Patients taking Effient should also take aspirin (75 mg to 325 mg) daily [see Drug Interactions (7) and Clinical Pharmacology (12.3)]. Effient may be administered with or without food [see Clinical Pharmacology (12.3) and Clinical Studies (14)].

Dosing in Low Weight Patients: Compared to patients weighing ≥60 kg, patients weighing <60 kg have an increased exposure to the active metabolite of prasugrel and an increased risk of bleeding on a 10 mg once daily maintenance dose. Consider lowering the maintenance dose to 5 mg in patients <60 kg. The effectiveness and safety of the 5 mg dose have not been prospectively studied.

4 CONTRAINDICATIONS

4.1 Active Bleeding: Effient is contraindicated in patients with active pathological bleeding such as peptic ulcer or intracranial hemorrhage [see Warnings and Precautions (5.1) and Adverse Reactions (6.1)].

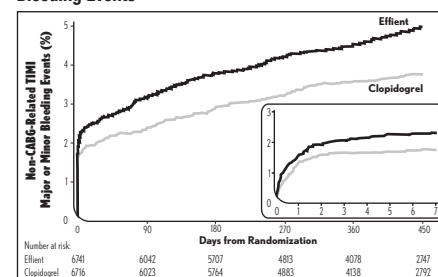
4.2 Prior Transient Ischemic Attack or Stroke: Effient is contraindicated in patients with a history of prior transient ischemic attack (TIA) or stroke. In TRITON-TIMI 38 (TRIAL to Assess Improvement in Therapeutic Outcomes by Optimizing

Platelet Inhibition with Prasugrel), patients with a history of TIA or ischemic stroke (>3 months prior to enrollment) had a higher rate of stroke on Effient (6.5%; of which 4.2% were thrombotic stroke and 2.3% were intracranial hemorrhage [ICH]) than on clopidogrel (1.2%; all thrombotic). In patients without such a history, the incidence of stroke was 0.9% (0.2% ICH) and 1.0% (0.3% ICH) with Effient and clopidogrel, respectively. Patients with a history of ischemic stroke within 3 months of screening and patients with a history of hemorrhagic stroke at any time were excluded from TRITON-TIMI 38. Patients who experience a stroke or TIA while on Effient generally should have therapy discontinued [see Adverse Reactions (6.1) and Clinical Studies (14)].

5 WARNINGS AND PRECAUTIONS

5.1 General Risk of Bleeding: Thienopyridines, including Effient, increase the risk of bleeding. With the dosing regimens used in TRITON-TIMI 38, TIMI (Thrombolysis in Myocardial Infarction) Major (clinically overt bleeding associated with a fall in hemoglobin ≥5 g/dL, or intracranial hemorrhage) and TIMI Minor (overt bleeding associated with a fall in hemoglobin of ≥3 g/dL but <5 g/dL) bleeding events were more common on Effient than on clopidogrel [see Adverse Reactions (6.1)]. The bleeding risk is highest initially, as shown in Figure 1 (events through 450 days; inset shows events through 7 days).

Figure 1: Non-CABG-Related TIMI Major or Minor Bleeding Events



Suspect bleeding in any patient who is hypotensive and has recently undergone coronary angiography, PCI, CABG, or other surgical procedures even if the patient does not have overt signs of bleeding.

Do not use Effient in patients with active bleeding, prior TIA or stroke [see Contraindications (4.1 and 4.2)].

Other risk factors for bleeding are:

- Age ≥75 years. Because of the risk of bleeding (including fatal bleeding) and uncertain effectiveness in patients ≥75 years of age, use of Effient is generally not recommended in these patients, except in high-risk situations (patients with diabetes or history of myocardial infarction) where its effect appears to be greater and its use may be considered [see Adverse Reactions (6.1), Use in Specific Populations (8.5), Clinical Pharmacology (12.3), and Clinical Trials (14)].
- CABG or other surgical procedure [see Warnings and Precautions (5.2)].
- Body weight <60 kg. Consider a lower (5 mg) maintenance dose [see Dosage and Administration (2), Adverse Reactions (6.1), Use in Specific Populations (8.6)].
- Propensity to bleed (e.g., recent trauma, recent surgery, recent or recurrent gastrointestinal (GI) bleeding, active peptic ulcer disease, or severe hepatic impairment) [see Adverse Reactions (6.1) and Use in Specific Populations (8.8)].
- Medications that increase the risk of bleeding (e.g., oral anticoagulants, chronic use of non-steroidal anti-inflammatory drugs [NSAIDs], and fibrinolytic agents). Aspirin and heparin were commonly used in TRITON-TIMI 38 [see Drug Interactions (7), Clinical Studies (14)].

Thienopyridines inhibit platelet aggregation for the lifetime of the platelet (7-10 days), so withholding a dose will not be useful in managing a bleeding event or the risk of bleeding associated with an invasive procedure. Because the half-life of prasugrel's active metabolite is short relative to the lifetime of the platelet, it may be possible to restore hemostasis by administering exogenous platelets; however, platelet transfusions within 6 hours of the loading dose or 4 hours of the maintenance dose may be less effective.

5.2 Coronary Artery Bypass Graft Surgery-Related Bleeding: The risk of bleeding is increased in patients receiving Effient who undergo CABG. If possible, Effient should be discontinued at least 7 days prior to CABG.

Of the 437 patients who underwent CABG during TRITON-TIMI 38, the rates of CABG-related TIMI Major or Minor bleeding were 14.1% in the Effient group and 4.5% in the clopidogrel group [see Adverse Reactions (6.1)]. The higher risk for bleeding events in patients treated with Effient persisted up to 7 days from the most recent dose of study drug. For patients receiving a thienopyridine within 3 days prior to CABG, the frequencies of TIMI Major or Minor bleeding were 26.7% (12 of 45 patients) in the Effient group, compared with

5.0% (3 of 60 patients) in the clopidogrel group. For patients who received their last dose of thienopyridine within 4 to 7 days prior to CABG, the frequencies decreased to 11.3% (9 of 80 patients) in the prasugrel group and 3.4% (3 of 89 patients) in the clopidogrel group.

Do not start Effient in patients likely to undergo urgent CABG. CABG-related bleeding may be treated with transfusion of blood products, including packed red blood cells and platelets; however, platelet transfusions within 6 hours of the loading dose or 4 hours of the maintenance dose may be less effective.

5.3 Discontinuation of Effient: Discontinue thienopyridines, including Effient, for active bleeding, elective surgery, stroke, or TIA. The optimal duration of thienopyridine therapy is unknown. In patients who are managed with PCI and stent placement, premature discontinuation of any antiplatelet medication, including thienopyridines, conveys an increased risk of stent thrombosis, myocardial infarction, and death. Patients who require premature discontinuation of a thienopyridine will be at increased risk for cardiac events. Lapses in therapy should be avoided, and if thienopyridines must be temporarily discontinued because of an adverse event(s), they should be restarted as soon as possible [see Contraindications (4.1 and 4.2) and Warnings and Precautions (5.1)].

5.4 Thrombotic Thrombocytopenic Purpura: Thrombotic thrombocytopenic purpura (TTP) has been reported with the use of other thienopyridines, sometimes after a brief exposure (<2 weeks). TTP is a serious condition that can be fatal and requires urgent treatment, including plasmapheresis (plasma exchange). TTP is characterized by thrombocytopenia, microangiopathic hemolytic anemia (schistocytes [fragment red blood cells] seen on peripheral smear), neurological findings, renal dysfunction, and fever.

6 ADVERSE REACTIONS

6.1 Clinical Trials Experience: The following serious adverse reactions are also discussed elsewhere in the labeling:

- Bleeding [see Boxed Warning and Warnings and Precautions (5.1, 5.2)]
- Thrombotic thrombocytopenic purpura [see Warnings and Precautions (5.4)]

Safety in patients with ACS undergoing PCI was evaluated in a clopidogrel-controlled study, TRITON-TIMI 38, in which 6741 patients were treated with Effient (60 mg loading dose and 10 mg once daily) for a median of 14.5 months (5802 patients were treated for over 6 months; 4136 patients were treated for more than 1 year). The population treated with Effient was 27 to 96 years of age, 25% female, and 92% Caucasian. All patients in the TRITON-TIMI 38 study were to receive aspirin. The dose of clopidogrel in this study was a 300 mg loading dose and 75 mg once daily.

Because clinical trials are conducted under widely varying conditions, adverse reaction rates observed in the clinical trials cannot be directly compared with the rates observed in other clinical trials of another drug and may not reflect the rates observed in practice.

Drug Discontinuation: The rate of study drug discontinuation because of adverse reactions was 7.2% for Effient and 6.3% for clopidogrel. Bleeding was the most common adverse reaction leading to study drug discontinuation for both drugs (2.5% for Effient and 1.4% for clopidogrel).

Bleeding: Bleeding Unrelated to CABG Surgery - In TRITON-TIMI 38, overall rates of TIMI Major or Minor bleeding adverse reactions unrelated to coronary artery bypass graft surgery (CABG) were significantly higher on Effient than on clopidogrel, as shown in Table 1.

Table 1: Non-CABG-Related Bleeding* (TRITON-TIMI 38)

	Effient (%) (N=6741)	Clopidogrel (%) (N=6716)	p-value
TIMI Major or Minor bleeding	4.5	3.4	p=0.002
TIMI Major bleeding ^a	2.2	1.7	p=0.029
Life-threatening	1.3	0.8	p=0.015
Fatal	0.3	0.1	
Symptomatic intracranial hemorrhage (ICH)	0.3	0.3	
Requiring inotropes	0.3	0.1	
Requiring surgical intervention	0.3	0.3	
Requiring transfusion (≥4 units)	0.7	0.5	
TIMI Minor bleeding ^b	2.4	1.9	p=0.022

* Patients may be counted in more than one row.

^a See 5.1 for definition.

Figure 1 demonstrates non-CABG related TIMI Major or Minor bleeding. The bleeding rate is highest initially, as shown in Figure 1 (inset: Days 0 to 7) [see Warnings and Precautions (5.1)]. Bleeding rates in patients with the risk factors of age ≥75 years and weight <60 kg are shown in Table 2.

