

Adverse Event	amlodipine		Placebo	
	M=% (N=1218)	F=% (N=512)	M=% (N=914)	F=% (N=336)
Edema	5.6	14.6	1.4	5.1
Flushing	1.5	4.5	0.3	0.9
Palpitations	1.4	3.3	0.9	0.9
Somnolence	1.3	1.6	0.8	0.3

The following events occurred in  $\leq 1\%$  but  $>0.1\%$  of patients treated with amlodipine in controlled clinical trials or under conditions of open trials or marketing experience where a causal relationship is uncertain; they are listed to alert the physician to a possible relationship: **Cardiovascular:** arrhythmia (including ventricular tachycardia and atrial fibrillation), bradycardia, chest pain, hypotension, peripheral ischemia, syncope, tachycardia, postural dizziness, postural hypotension, vasculitis. **Central and Peripheral Nervous System:** hypoaesthesia, neuropathy peripheral, paresthesia, tremor, vertigo. **Gastrointestinal:** anorexia, constipation, dyspepsia, dysphagia, diarrhea, flatulence, pancreatitis, vomiting, gingival hyperplasia. **General:** allergic reaction, asthenia, back pain, hot flushes, malaise, pain, rigors, weight gain, weight decrease. **Musculoskeletal System:** arthralgia, arthrosis, muscle cramps, myalgia. **Psychiatric:** sexual dysfunction (male and female), insomnia, nervousness, depression, abnormal dreams, anxiety, depersonalization. **Respiratory System:** dyspnea, epistaxis. **Skin and Appendages:** angioedema, erythema multiforme, pruritus, rash, rash erythematous, rash maculopapular. **Special Senses:** abnormal vision, conjunctivitis, diplopia, eye pain, tinnitus. **Urinary System:** micturition frequency, micturition disorder, nocturia. **Autonomic Nervous System:** dry mouth, sweating increased. **Metabolic and Nutritional:** hyperglycemia, thirst. **Hematologic:** leukopenia, purpura, thrombocytopenia. The following events occurred in  $\leq 0.1\%$  of patients treated with amlodipine in controlled clinical trials or under conditions of open trials or marketing experience: cardiac failure, pulse irregularity, extrasystoles, skin discoloration, urticaria, skin dryness, alopecia, dermatitis, muscle weakness, twitching, ataxia, hypertension, migraine, cold and clammy skin, apathy, agitation, amnesia, gastritis, increased appetite, loose stools, coughing, rhinitis, dysuria, polyuria, parosmia, taste perversion, abnormal visual accommodation, and xerophthalmia. Other reactions occurred sporadically and cannot be distinguished from medications or concurrent disease states such as myocardial infarction and angina. Amlodipine therapy has not been associated with clinically significant changes in routine laboratory tests. No clinically relevant changes were noted in serum potassium, serum glucose, total triglycerides, total cholesterol, HDL cholesterol, uric acid, blood urea nitrogen, or creatinine. The following postmarketing event has been reported infrequently with amlodipine treatment where a causal relationship is uncertain: gynecomastia. In postmarketing experience, jaundice and hepatic enzyme elevations (mostly consistent with cholestasis or hepatitis) in some cases severe enough to require hospitalization have been reported in association with use of amlodipine. Amlodipine has been used safely in patients with chronic obstructive pulmonary disease, well-compensated congestive heart failure, peripheral vascular disease, diabetes mellitus, and abnormal lipid profiles. **The Atorvastatin Component of CADUET:** Atorvastatin is generally well-tolerated. Adverse reactions have usually been mild and transient. In controlled clinical studies of 2502 patients,  $<2\%$  of patients were discontinued due to adverse experiences attributable to atorvastatin calcium. The most frequent adverse events thought to be related to atorvastatin calcium were constipation, flatulence, dyspepsia, and abdominal pain. Clinical Adverse Experiences: Adverse experiences reported in  $\geq 2\%$  of patients in placebo-controlled clinical studies of atorvastatin, regardless of causality assessment, are shown in Table 3.

Table 3. Adverse Events in Placebo-Controlled Studies (% of Patients)

Body System/ Adverse Event	atorvastatin				
	Placebo N=270	10 mg N=863	20 mg N=36	40 mg N=79	80 mg N=94
<b>BODY AS A WHOLE</b>					
Infection	10.0	10.3	2.8	10.1	7.4
Headache	7.0	5.4	16.7	2.5	6.4
Accidental Injury	3.7	4.2	0.0	1.3	3.2
Flu Syndrome	1.9	2.2	0.0	2.5	3.2
Abdominal Pain	0.7	2.8	0.0	3.8	2.1
Back Pain	3.0	2.8	0.0	3.8	1.1
Allergic Reaction	2.6	0.9	2.8	1.3	0.0
Asthenia	1.9	2.2	0.0	3.8	0.0
<b>DIGESTIVE SYSTEM</b>					
Constipation	1.8	2.1	0.0	2.5	1.1
Diarrhea	1.5	2.7	0.0	3.8	5.3
Dyspepsia	4.1	2.3	2.8	1.3	2.1
Flatulence	3.3	2.1	2.8	1.3	1.1
<b>RESPIRATORY SYSTEM</b>					
Sinusitis	2.6	2.8	0.0	2.5	6.4
Pharyngitis	1.5	2.5	0.0	1.3	2.1
<b>SKIN AND APPENDAGES</b>					
Rash	0.7	3.9	2.8	3.8	1.1
<b>MUSCULOSKELETAL SYSTEM</b>					
Arthralgia	1.5	2.0	0.0	5.1	0.0
Myalgia	1.1	3.2	5.6	1.3	0.0

**Anglo-Scandinavian Cardiac Outcomes Trial (ASCOT):** In ASCOT involving 10,305 participants treated with atorvastatin 10 mg daily (n=5,168) or placebo (n=5,137), the safety and tolerability profile of the group treated with atorvastatin was comparable to that of the group treated with placebo during a median of 3.3 years of follow-up. The following adverse events were reported, regardless of causality assessment, in patients treated with atorvastatin in clinical trials. The events in italics occurred in  $\geq 2\%$  of patients and the events in plain type occurred in  $<2\%$  of patients. **Body as a Whole:** Chest pain, face edema, fever, neck rigidity, malaise, photosensitivity reaction, generalized edema. **Digestive System:** Nausea, gastroenteritis, liver function tests abnormal, colitis, vomiting, gastritis, dry mouth, rectal hemorrhage, esophagitis, eructation, glossitis, mouth ulceration, anorexia, increased appetite, stomatitis, biliary pain, cheilitis, duodenal ulcer, dysphagia, enteritis, melena, gum hemorrhage, stomach ulcer, tenesmus, ulcerative stomatitis, hepatitis, pancreatitis, cholestatic jaundice. **Respiratory System:** Bronchitis, rhinitis, pneumonia, dyspnea, asthma, epistaxis. **Nervous System:** Insomnia, dizziness, paresthesia, somnolence, amnesia, abnormal dreams, libido decreased, emotional lability, incoordination, peripheral neuropathy, torticollis, facial paralysis, hyperkinesia, depression, hypesthesia, hypertonia. **Musculoskeletal System:** Arthritis, leg cramps, bursitis, tenosynovitis, myositis, tendon contracture, myositis. **Skin and Appendages:** Pruritus, contact dermatitis, alopecia, dry skin, sweating, acne, urticaria, eczema, seborrhea, skin ulcer. **Urogenital System:** Urinary tract infection, urinary frequency, cystitis, hematuria, impotence, dysuria, kidney calculus, nocturia, epididymitis, fibrocystic breast, vaginal hemorrhage, albuminuria, breast enlargement, metrorrhagia, nephritis, urinary incontinence, urinary retention, urinary urgency, abnormal ejaculation, uterine hemorrhage. **Special Senses:** Amblyopia, tinnitus, dry eyes, refraction disorder, eye hemorrhage, deafness, glaucoma, parosmia, taste loss, taste perversion. **Cardiovascular System:** Palpitation, vasodilatation, syncope, migraine, postural hypotension, phlebitis, arrhythmia, angina pectoris, hypertension. **Metabolic and Nutritional Disorders:** Peripheral edema, hyperglycemia, creatine phosphokinase increased, gout, weight gain, hypoglycemia. **Hemic and Lymphatic System:** Echinocystosis, anemia, lymphadenopathy, thrombocytopenia, petechia. **Postintroduction Reports with Atorvastatin:** Adverse events associated with atorvastatin therapy reported since market introduction, that are not listed above, regardless of causality assessment, include the following: anaphylaxis, angioneurotic edema, bullous rashes (including erythema multiforme, Stevens-Johnson syndrome, and toxic epidermal necrolysis), and rhabdomyolysis. **Pediatric Patients (ages 10-17 years):** In a 26-week controlled study in boys and postmenarcheal girls (n=140), the safety and tolerability profile of atorvastatin 10 to 20 mg daily was generally similar to that of placebo (see **PRECAUTIONS, Pediatric Use**).

**OVERDOSAGE:** There is no information on overdosage with CADUET in humans. **Information on Amlodipine:** Single oral doses of amlodipine maleate equivalent to 40 mg amlodipine/kg and 100 mg amlodipine/kg in mice and rats, respectively, caused deaths. Single oral amlodipine maleate doses equivalent to 4 or more mg amlodipine/kg in dogs (11 or more times the maximum recommended clinical dose on a mg/m<sup>2</sup> basis) caused a marked peripheral vasodilation and hypotension. Overdosage might be expected to cause excessive peripheral vasodilation with marked hypotension and possibly a reflex tachycardia. In humans, experience with intentional overdosage of amlodipine is limited. Reports of intentional overdosage include a patient who ingested 250 mg and was asymptomatic and was not hospitalized; another (120 mg) was hospitalized, underwent gastric lavage and remained normotensive; the third (105 mg) was hospitalized and had hypotension (90/50 mmHg) which normalized following plasma expansion. A patient who took 70 mg amlodipine and an unknown quantity of benzodiazepine in a suicide attempt developed shock which was refractory to treatment and died the following day with abnormally high benzodiazepine plasma concentration. A case of accidental drug overdose has been documented in a 19-month-old male who ingested 30 mg amlodipine (about 2 mg/kg). During the emergency room presentation, vital signs were stable with no evidence of hypotension, but a heart rate of 180 bpm. Ipecac was administered 3.5 hours after ingestion and on subsequent observation (overnight) no sequelae were noted. If massive overdose should occur, active cardiac and respiratory monitoring should be instituted. Frequent blood pressure measurements are essential. Should hypotension occur, cardiovascular support including elevation of the extremities and the judicious administration of fluids should be initiated. If hypotension remains unresponsive to these conservative measures, administration of vasopressors (such as phenylephrine) should be considered with attention to circulating volume and urine output. Intravenous calcium gluconate may help to reverse the effects of calcium entry blockade. As amlodipine is highly protein bound, hemodialysis is not likely to be of benefit. **Information on Atorvastatin:** There is no specific treatment for atorvastatin overdosage. In the event of an overdose, the patient should be treated symptomatically, and supportive measures instituted as required. Due to extensive drug binding to plasma proteins, hemodialysis is not expected to significantly enhance atorvastatin clearance.

\*Based on patient weight of 50 kg.

\*\*These events occurred in less than 1% in placebo-controlled trials, but the incidence of these side effects was between 1% and 2% in all multiple dose studies.

Rx only

Manufactured by:  
Pfizer Ireland Pharmaceuticals  
Dublin, Ireland

© 2004 Pfizer Ireland Pharmaceuticals

Distributed by:



**Pfizer Labs**

Division of Pfizer Inc., NY, NY 10017

Rev. 1 October 2004

# Smaller Lumens Explain Women's TPA Response

BY SHARON WORCESTER

Southeast Bureau

KISSIMMEE, FLA. — Differences in vessel size may explain why women have higher recanalization rates than men as well as better final outcomes following intravenous thrombolysis for acute ischemic stroke, Dr. David S. Liebeskind reported at the 31st International Stroke Conference.

These differences have been demonstrated in previous studies and a number of possible pathophysiologic explanations have been offered. Intravenous thrombolysis was evaluated in 100 men and 100 women based on factors such as anatomy and flow physiology to evaluate the possibility that vessel size contributes to the differences, or more specifically, that "angiarchitectural differences predispose women to recanalize more efficiently due to favorable clot geometry," said Dr. Liebeskind.

The cross-sectional lumen areas of the proximal middle cerebral, supraclinoid internal carotid, and distal basilar arteries were measured in the participants using 3-D CT angiograms. Weight and height data were used to calculate tissue plasminogen activator (TPA) dose, and patient data were used to model clot volume and ratio of exposed surface area to total clot volume.

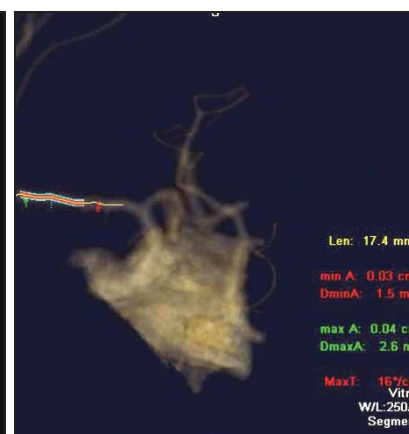
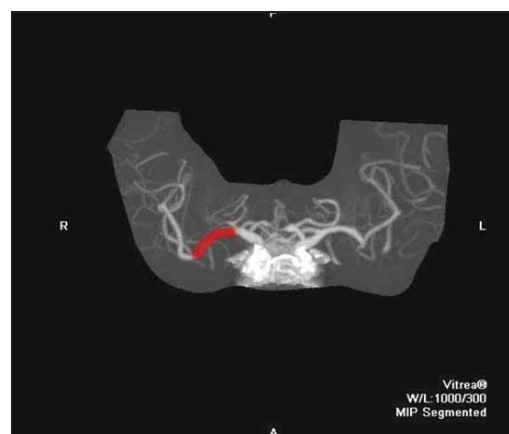
Intracranial arteries are significantly smaller in women than in men, said Dr. Liebeskind of the University of California, Los Angeles. The proximal middle cerebral artery (MCA) in women vs. men averaged 0.049 vs. 0.052 cm<sup>2</sup>, distal internal carotid artery (ICA) was 0.085 vs. .099 cm<sup>2</sup>, and distal basilar was 0.059 vs. 0.073 cm<sup>2</sup>. All differences were statistically significant.

Similar statistically significant differences were noted in terms of clot volume (proximal MCA: 0.078 vs. 0.089 cm<sup>3</sup>; distal ICA: 0.079 vs. 0.109 cm<sup>3</sup>; distal basilar: 0.066 vs. 0.096 cm<sup>3</sup>), and in the ratio of exposed surface area to target clot volume, which was significantly greater in women (proximal MCA: 0.697 vs. 0.659 cm<sup>-1</sup>; distal ICA: 1.156 vs. 1.023 cm<sup>-1</sup>; distal basilar: 1.039 vs. 0.855 cm<sup>-1</sup>), he said.

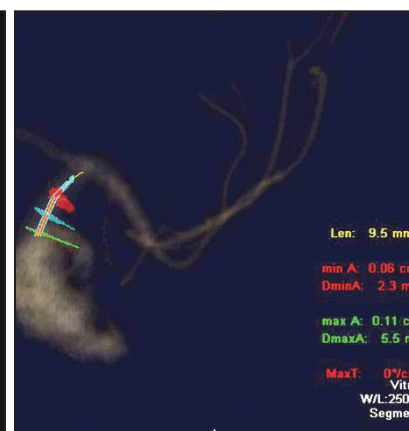
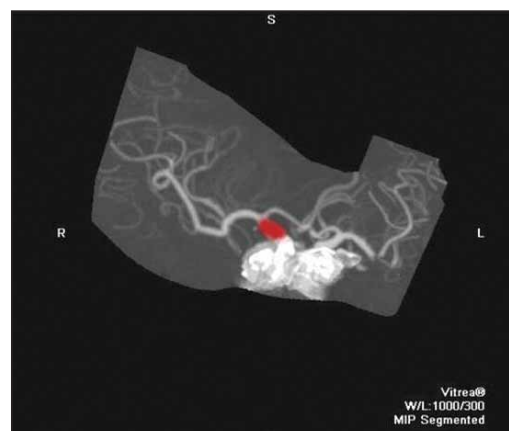
Women were more likely to have actual body weight above ideal body weight and greater differences between actual and ideal body weight, compared with men. This means an increased TPA-to-surface area ratio, creating discordance between TPA dosage (based on weight) and vessel size, resulting in relatively higher TPA dosing in women, compared with men.

The "theoretical thrombolysis" used in this study suggests that the smaller vessel size and lesser clot volume seen in women, along with relatively higher doses of TPA, contribute to their improved responsiveness to intravenous thrombolysis, Dr. Liebeskind said at the conference, which was sponsored by the American Stroke Association. Increases in radius or length of the patent channel that may form within the clot further accentuate the differences seen in surface area-to-clot volume ratio, he added.

Although the study is limited by its theoretical nature and simplified anatomical characterizations without regard to potentially critical pathophysiology, the findings suggest that adjusting the dosing of intravenous TPA to body frame size could optimize recanalization in both men and women, he concluded.



At left, CT angiography shows a thrombus (red) in the middle cerebral artery. At right, volume-rendered CT angi shows areas of proximal and distal lumens and vessel length.



A thrombus (red) in the terminal ICA is shown at left. Areas of the proximal and distal lumens and vessel length in volume-rendered CT angi are shown at right.