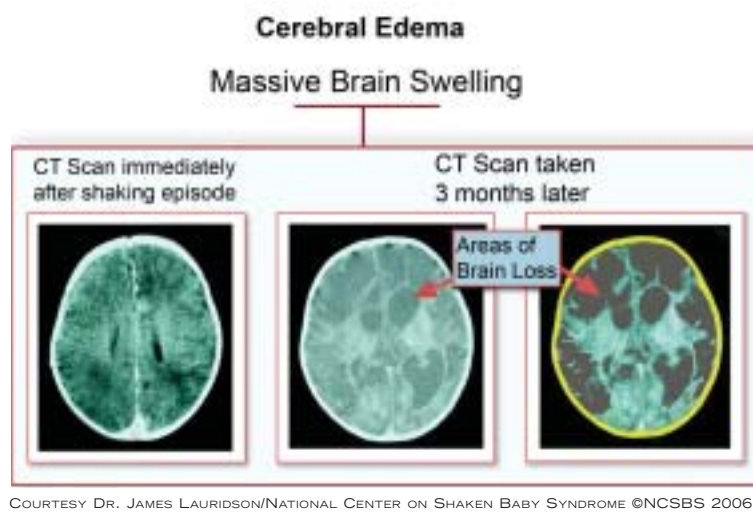


Images of cerebral edema in a shaken baby's brain: Misinterpretation of a CT scan or radiograph was found to cause a delay in diagnosis, ranging from 1 to 174 days, in a JAMA study.



COURTESY DR. JAMES LAURIDSON/NATIONAL CENTER ON SHAKEN BABY SYNDROME ©NCSBS 2006

# Abusive Head Trauma Easily Missed in the ED

BY FRAN LOWRY  
Orlando Bureau

NEW ORLEANS — Abusive head trauma is misdiagnosed in almost a third of children who are brought to the emergency department, Dr. Denis R. Pauzé said at the annual meeting of the American College of Emergency Physicians.

A missed diagnosis of abusive head trauma (AHT), also known as inflicted head trauma or shaken baby syndrome, can have tragic consequences, he said. Most infant homicides are caused by AHT, with the highest incidence occurring in babies less than 6 months old, said Dr. Pauzé of Inova Fairfax Hospital, Falls Church, Va.

“Failure to diagnose these infants and children leaves them at high risk for repeat abuse, which can lead to learning disabilities, permanent brain damage, or death. Just 5-20 seconds of shaking can kill,” Dr. Pauzé said. But making the diagnosis can be difficult. A child who has been shaken



‘We ... must have a high index of suspicion in order to diagnose inflicted head trauma.’

DR. PAUZÉ

often presents with nonspecific symptoms, such as poor feeding, vomiting, diarrhea, irritability, and fever. “We therefore must have a high index of suspicion in order to diagnose inflicted head trauma,” he said.

An article published in the *Journal of the American Medical Association* (1999; 281:621-6) is “must reading” for emergency department physicians, he said.

In a chart review, the researchers studied the characteristics of unrecognized AHT in children less than 3 years old. They found that nearly one-third of abused children who presented after AHT had their initial diagnosis missed. The average delay in diagnosis was 7 days.

The most common erroneous diagnoses made were gastroenteritis, influenza, accidental head injury, rule-out sepsis, increasing head size, otitis media, seizure disorder, reflux, and apnea. Misinterpretation of the CT scan or radiograph also caused a delay in diagnosis, which ranged from 1 to 174 days.

On the horizon to help emergency physicians make the right diagnosis in a timely manner are traumatic brain markers. Many organs, including the liver, pancreas, kidney, and heart, have serum biomarkers that act as guides to organ injury. The hope is that a biomarker for brain injury will become a bedside test for AHT in the future.

Until then, a complete and thorough history and physical exam are needed to diagnose AHT, Dr. Pauzé said.

Conflicting histories, delay in seeking medical care, or repetitive injuries should make physicians suspicious. Other red flags include injuries that are not consistent with the history given or with the developmental age of the infant or child.

A head-to-toe physical exam must be done, including checking for macrocephaly and inspecting for scalp, facial, or neck bruises. Examine the ribs and extremities for signs of tenderness or deformity and, if possible, perform a funduscopic exam for retinal hemorrhages. ■

## ARICEPT® (Donepezil Hydrochloride Tablets) ARICEPT® ODT (Donepezil Hydrochloride) Orally Disintegrating Tablets

**Brief Summary**—see package insert for full prescribing information. **INDICATIONS AND USAGE** ARICEPT® is indicated for the treatment of mild to moderate dementia of the Alzheimer's type. **CONTRAINDICATIONS** ARICEPT® is contraindicated in patients with known hypersensitivity to donepezil hydrochloride or to piperidine derivatives. **WARNINGS Anesthesia:** ARICEPT®, as a cholinesterase inhibitor, is likely to exaggerate succinylcholine-type muscle relaxation during anesthesia. **Cardiovascular Conditions:** Because of their pharmacological action, cholinesterase inhibitors may have vagotonic effects on the sinoatrial and atrioventricular nodes. This effect may manifest as bradycardia or heart block in patients both with and without known underlying cardiac conduction abnormalities. Syncope episodes have been reported in association with the use of ARICEPT®. **Gastrointestinal Conditions:** Through their primary action, cholinesterase inhibitors may be expected to increase gastric acid secretion due to increased cholinergic activity. Therefore, patients should be monitored closely for symptoms of active or occult gastrointestinal bleeding, especially those at increased risk for developing ulcers, e.g., those with a history of ulcer disease or those receiving concurrent nonsteroidal anti-inflammatory drugs (NSAIDs). Clinical studies of ARICEPT® have shown no increase, relative to placebo, in the incidence of either peptic ulcer disease or gastrointestinal bleeding. ARICEPT®, as a predictable consequence of its pharmacological properties, has been shown to produce diarrhea, nausea and vomiting. These effects, when they occur, appear more frequently with the 10 mg/day dose than with the 5 mg/day dose. In most cases, these effects have been mild and transient, sometimes lasting one to three weeks, and have resolved during continued use of ARICEPT®. **Genitourinary:** Although not observed in clinical trials of ARICEPT®, cholinomimetics may cause bladder outflow obstruction. **Neurological Conditions:** Seizures: Cholinomimetics are believed to have some potential to cause generalized convulsions. However, seizure activity also may be a manifestation of Alzheimer's Disease. **Pulmonary Conditions:** Because of their cholinomimetic actions, cholinesterase inhibitors should be prescribed with care to patients with a history of asthma or obstructive pulmonary disease. **PRECAUTIONS Drug-Drug Interactions** (see Clinical Pharmacology; Clinical Pharmacokinetics; Drug-Drug Interactions) **Effect of ARICEPT® on the Metabolism of Other Drugs:** No *in vivo* clinical trials have investigated the effect of ARICEPT® on the clearance of drugs metabolized by CYP3A4 (e.g., cisapride, terfenadine) or by CYP2D6 (e.g., imipramine). However, *in vitro* studies show a low rate of binding to these enzymes (mean  $K_d$  about 50-130  $\mu$ M), that, given the therapeutic plasma concentrations of donepezil (164 nM), indicates little likelihood of interference. Whether ARICEPT® has any potential for enzyme induction is not known. Formal pharmacokinetic studies evaluated the potential of ARICEPT® for interaction with theophylline, cimetidine, warfarin, digoxin and ketoconazole. No effects of ARICEPT® on the pharmacokinetics of these drugs were observed. **Effect of Other Drugs on the Metabolism of ARICEPT®:** Ketoconazole and quinidine, inhibitors of CYP3A4 and CYP2D6, respectively, inhibit donepezil metabolism *in vitro*. Whether there is a clinical effect of quinidine is not known. In a 7-day crossover study in 18 healthy volunteers, ketoconazole (200 mg q.d.) increased mean donepezil (5 mg q.d.) concentrations ( $AUC_{0-24}$  and  $C_{max}$ ) by 36%. The clinical relevance of this increase in concentration is unknown. Inducers of CYP2D6 and CYP3A4 (e.g., phenytoin, carbamazepine, dexamethasone, ritampin, and phenobarbital) could increase the rate of elimination of ARICEPT®. Formal pharmacokinetic studies demonstrated that the metabolism of ARICEPT® is not significantly affected by concurrent administration of digoxin or cimetidine. **Use with Anticholinergics:** Because of their mechanism of action, cholinesterase inhibitors have the potential to interfere with the activity of anticholinergic medications. **Use with Cholinomimetics and Other Cholinesterase Inhibitors:** A synergistic effect may be expected when cholinesterase inhibitors are given concurrently with succinylcholine, similar neuromuscular blocking agents or cholinergic agonists such as bethanechol. **Carcinogenesis, Mutagenesis, Impairment of Fertility** No evidence of a carcinogenic potential was obtained in an 88-week carcinogenicity study of donepezil hydrochloride conducted in CD-1 mice at doses up to 180 mg/kg/day (approximately 90 times the maximum recommended human dose on a mg/m<sup>2</sup> basis), or in a 104-week carcinogenicity study in Sprague-Dawley rats at doses up to 30 mg/kg/day (approximately 30 times the maximum recommended human dose on a mg/m<sup>2</sup> basis). Donepezil was not mutagenic in the Ames reverse mutation assay in bacteria, or in a mouse lymphoma forward mutation assay *in vitro*. In the chromosome aberration test in cultures of Chinese hamster lung (CHL) cells, some clastogenic effects were observed. Donepezil was not clastogenic in the *in vivo* mouse micronucleus test and was not genotoxic in an *in vivo* unscheduled DNA synthesis assay in rats. Donepezil had no effect on fertility in rats at doses up to 10 mg/kg/day (approximately 8 times the maximum recommended human dose on a mg/m<sup>2</sup> basis). **Pregnancy Pregnancy Category C:** Teratology studies conducted in pregnant rats at doses up to 16 mg/kg/day (approximately 13 times the maximum recommended human dose on a mg/m<sup>2</sup> basis) and in pregnant rabbits at doses up to 10 mg/kg/day (approximately 16 times the maximum recommended human dose on a mg/m<sup>2</sup> basis) did not disclose any evidence for a teratogenic potential of donepezil. However, in a study in which pregnant rats were given up to 10 mg/kg/day (approximately 8 times the maximum recommended human dose on a mg/m<sup>2</sup> basis) from day 17 of gestation through day 20 postpartum, there was a slight increase in stillbirths and a slight decrease in pup survival through day 4 postpartum at this dose; the next lower dose tested was 3 mg/kg/day. There are no adequate or well-controlled studies in pregnant women. ARICEPT® should be used during pregnancy only if the potential benefit justifies the potential risk to the fetus. **Nursing Mothers** It is not known whether donepezil is excreted in human breast milk. ARICEPT® has no indication for use in nursing mothers. **Pediatric Use** There are no adequate and well-controlled trials to document the safety and efficacy of ARICEPT® in any illness occurring in children. **Geriatric Use** Alzheimer's disease is a disorder occurring primarily in individuals over 55 years of age. The mean age of the patients enrolled in the clinical studies with ARICEPT® was 73 years; 80% of these patients were between 65 and 84 years old and 49% of the patients were 75 or above the age of 75. The efficacy and safety data presented in the clinical trials section were obtained from these patients. There were no clinically significant differences in most adverse events reported by patient groups  $\geq 65$  years old and  $< 65$  years old. **ADVERSE REACTIONS Adverse Events Leading to Discontinuation** The rates of discontinuation from controlled clinical trials of ARICEPT® due to adverse events for the ARICEPT® 5 mg/day treatment groups were comparable to those of placebo-treatment groups at approximately 5%. The rate of discontinuation of patients who received 7-day escalations from 5 mg/day to 10 mg/day, was higher at 13%. The most common adverse events leading to discontinuation, defined as those occurring in at least 2% of patients and at twice the incidence seen in placebo patients, are shown in Table 1.

Table 1. Most Frequent Adverse Events Leading to Withdrawal from Controlled Clinical Trials by Dose Group

Dose Group	Placebo (n=315)	5 mg/day ARICEPT® (n=311)	10 mg/day ARICEPT® (n=269)
<b>Patients Randomized</b>	355	350	315
<b>Event/% Discontinuing</b>			
Nausea	1%	1%	3%
Diarrhea	0%	<1%	3%
Vomiting	<1%	<1%	2%

**Most Frequent Adverse Clinical Events Seen in Association with the Use of ARICEPT®** The most common adverse events, defined as those occurring at a frequency of at least 5% in patients receiving 10 mg/day and twice the placebo rate, are largely predicted by ARICEPT®'s cholinomimetic effects. These include nausea, diarrhea, insomnia, vomiting, muscle cramp, fatigue and anorexia. These adverse events were often of mild intensity and transient, resolving during continued ARICEPT® treatment without the need for dose modification. There is evidence to suggest that the frequency of these common adverse events may be affected by the rate of titration. An open-label study was conducted with 269 patients who received placebo in the 15 and 30-week studies. These patients were titrated to a dose of 10 mg/day over a 6-week period. The rates of common adverse events were lower than those seen in patients titrated to 10 mg/day over one week in the controlled clinical trials and were comparable to those seen in patients on 5 mg/day. See Table 2 for a comparison of the most common adverse events following one and six week titration regimens.

Table 2. Comparison of Rates of Adverse Events in Patients Titrated to 10 mg/day Over 1 and 6 Weeks

Adverse Event	No titration		One week titration		Six week titration	
	Placebo (n=315)	5 mg/day (n=311)	10 mg/day (n=315)	10 mg/day (n=269)	10 mg/day (n=269)	10 mg/day (n=269)
Nausea	6%	5%	19%	6%	6%	6%
Diarrhea	5%	8%	15%	9%	9%	9%
Insomnia	6%	6%	14%	6%	6%	6%
Fatigue	3%	4%	8%	3%	3%	3%
Vomiting	3%	3%	8%	5%	5%	5%
Muscle cramps	2%	6%	8%	3%	3%	3%
Anorexia	2%	3%	7%	3%	3%	3%

**Adverse Events Reported in Controlled Trials** The events cited reflect experience gained under closely monitored conditions of clinical trials in a highly selected patient population. In actual clinical practice or in other clinical trials, these frequency estimates may not apply, as the conditions of use, reporting behavior, and the kinds of patients treated may differ. Table 3 lists treatment emergent signs and symptoms that were reported in at least 2% of patients in placebo-controlled trials who received ARICEPT® and for which the rate of occurrence was greater for ARICEPT® assigned than placebo assigned patients. In general, adverse events occurred more frequently in female patients and with advancing age.

Table 3. Adverse Events Reported in Controlled Clinical Trials in at Least 2% of Patients Receiving ARICEPT® and at a Higher Frequency than Placebo-Treated Patients

Body System/Adverse Event	Placebo (n=355)	ARICEPT® (n=747)
<b>Percent of Patients with any Adverse Event</b>	72	74
<b>Body as a Whole</b>		
Headache	9	10
Pain, various locations	8	9
Accident	6	7
Fatigue	3	5
<b>Cardiovascular System</b>		
Syncope	1	2
<b>Digestive System</b>		
Nausea	6	11
Diarrhea	5	10
Vomiting	3	5
Anorexia	2	4
<b>Hemic and Lymphatic System</b>		
Echymosis	3	4
<b>Metabolic and Nutritional Systems</b>		
Weight Decrease	1	3
<b>Musculoskeletal System</b>		
Muscle Cramps	2	6
Arthritis	1	2
<b>Nervous System</b>		
Insomnia	6	9
Dizziness	6	8
Depression	<1	3
Abnormal Dreams	0	3
Somnolence	<1	2
<b>Urogenital System</b>		
Frequent Urination	1	2

**Other Adverse Events Observed During Clinical Trials** ARICEPT® has been administered to over 1700 individuals during clinical trials worldwide. Approximately 1200 of these patients have been treated for at least 3 months and more than 1000 patients have been treated for at least 6 months. Controlled and uncontrolled trials in the United States included approximately 900 patients. In regards to the highest dose of 10 mg/day, this population includes 650 patients treated for 3 months, 475 patients treated for 6 months and 116 patients treated for over 1 year. The range of patient exposure is from 1 to 1214 days. Treatment emergent signs and symptoms that occurred during 3 controlled clinical trials and two open-label trials in the United States were recorded as adverse events by the clinical investigators using terminology of their own choosing. To provide an overall estimate of the proportion of individuals having similar types of events, the events were grouped into a smaller number of standardized categories using a modified COSTART dictionary and event frequencies were calculated across all studies. These categories are used in the listing below. The frequencies represent the proportion of 900 patients from these trials who experienced that event while receiving ARICEPT®. All adverse events occurring at least twice are included, except for those already listed in Tables 2 or 3. COSTART terms too general to be informative, or events less likely to be drug caused, events are classified by body system and listed using the following definitions: **frequent adverse events**—those occurring in at least 1/100 patients; **infrequent adverse events**—those occurring in 1/100 to 1/1000 patients. These adverse events are not necessarily related to ARICEPT® treatment and in most cases were observed at a similar frequency in placebo-treated patients in the controlled studies. No important additional adverse events were seen in studies conducted outside the United States. **Body as a Whole:** Frequent: influenza, chest pain, toothache; Infrequent: fever, edema face, periorbital edema, hemic facial, abscess, cellulitis, chills, generalized coldness, head fullness, listlessness. **Cardiovascular System:** Frequent: hypertension, vasodilation, atrial fibrillation, hot flashes, hypotension; Infrequent: angina pectoris, postural hypotension, myocardial infarction, AV block (first degree), congestive heart failure, arteritis, bradycardia, peripheral vascular disease, supraventricular tachycardia, deep vein thrombosis. **Digestive System:** Frequent: fecal incontinence, gastrointestinal bleeding, bloating, epigastric pain; Infrequent: eructation, gingivitis, increased appetite, flatulence, periorbital abscess, cholelithiasis, diverticulitis, drooling, dry mouth, fever, sore, gastritis, irritable colon, tongue edema, epigastric distress, gastroenteritis, increased transaminases, hemorrhoids, ileus, increased thirst, jaundice, melena, polydipsia, duodenal ulcer, stomach ulcer. **Endocrine System:** Infrequent: diabetes mellitus, goiter. **Hemic and Lymphatic System:** Infrequent: anemia, thrombocytopenia, thrombocytopenia, eosinophilia, erythrocytopenia. **Metabolic and Nutritional Disorders:** Frequent: dehydration; Infrequent: gout, hypokalemia, increased creatine kinase, hyperglycemia, weight increase, increased lactate dehydrogenase. **Musculoskeletal System:** Frequent: bone fracture; Infrequent: muscle weakness, muscle fasciculation. **Nervous System:** Frequent: delusions, tremor, irritability, paresthesia, aggression, vertigo, ataxia, increased libido, restlessness, abnormal crying, nervousness, aphasia; Infrequent: cerebrovascular accident, intracranial hemorrhage, transient ischemic attack, emotional lability, neuralgia, coldness (localized), muscle spasm, dysphoria, gait abnormality, hypertension, hypokinesia, neurodermatitis, numbness (localized), paranoia, dysarthria, dysphasia, hostility, decreased libido, melanholia, emotional withdrawal, nystagmus, pacing. **Respiratory System:** Frequent: dyspnea, sore throat, bronchitis; Infrequent: epistaxis, post nasal drip, pneumonia, hyperventilation, pulmonary congestion, wheezing, hypoxia, pharyngitis, pleurisy, pulmonary collapse, sleep apnea, snoring. **Skin and Appendages:** Frequent: pruritus, diaphoresis, urticaria; Infrequent: dermatitis, erythema, skin discoloration, hyperkeratosis, alopecia, fungal dermatitis, herpes zoster, hirsutism, skin striae, night sweats, skin ulcer. **Special Senses:** Frequent: cataract, eye irritation, vision blurred; Infrequent: dry eyes, glaucoma, earache, tinnitus, blepharitis, decreased hearing, retinal hemorrhage, otitis externa, otitis media, bad taste, conjunctival hemorrhage, ear buzzing, motion sickness, spots before eyes. **Urogenital System:** Frequent: urinary incontinence, nocturia; Infrequent: dysuria, hematuria, urinary urgency, metrorrhagia, cystitis, enuresis, prostate hypertrophy, pyelonephritis, inability to empty bladder, breast fibroadenosis, fibrocystic breast, mastitis, pyuria, renal failure, vaginitis. **Postintroduction Reports** Voluntary reports of adverse events temporally associated with ARICEPT® that have been received since market introduction that are not listed above, and that there is inadequate data to determine the causal relationship with the drug include the following: abdominal pain, agitation, cholecystitis, confusion, convulsions, hallucinations, heart block (all types), hemolytic anemia, hepatitis, hyponatremia, neuroleptic malignant syndrome, pancreatitis, and rash. **OVERDOSAGE Because strategies for the management of overdose are continually evolving, it is advisable to contact a Poison Control Center to determine the latest recommendations for the management of an overdose of any drug.** In any case of overdose, general supportive measures should be utilized. Overdose with cholinesterase inhibitors can result in cholinergic crisis characterized by severe nausea, vomiting, salivation, sweating, bradycardia, hypotension, respiratory depression, collapse and convulsions. Increasing muscle weakness is a possibility and may result in death if respiratory muscles are involved. Tertiary anticholinergics such as atropine may be used as an antidote for ARICEPT® overdose. Intravenous atropine sulfate titrated to effect is recommended: an initial dose of 1.0 to 2.0 mg IV with subsequent doses based upon clinical response. Atypical responses in blood pressure and heart rate have been reported with other cholinomimetics when co-administered with quaternary anticholinergics such as glycopyrrolate. It is not known whether ARICEPT® and/or its metabolites can be removed by dialysis (hemodialysis, peritoneal dialysis, or hemofiltration). Dose-related signs of toxicity in animals included reduced spontaneous movement, prone position, staggering gait, lacrimation, clonic convulsions, depressed respiration, salivation, miosis, tremors, fasciculation and lower body surface temperature. **DOSAGE AND ADMINISTRATION** The dosages of ARICEPT® shown to be effective in controlled clinical trials are 5 mg and 10 mg administered once per day. The higher dose of 10 mg did not provide a statistically significantly greater clinical benefit than 5 mg. There is a suggestion, however, based upon order of group mean scores and dose trend analyses of data from these clinical trials, that a daily dose of 10 mg of ARICEPT® might provide additional benefit for some patients. Accordingly, whether or not to employ a dose of 10 mg is a matter of prescriber and patient preference. Evidence from the controlled trials indicates that the 10 mg dose, with a one week titration, is likely to be associated with a higher incidence of cholinergic adverse events than the 5 mg dose. In open label trials using a 6 week titration, the frequency of these same adverse events was similar between the 5 mg and 10 mg dose groups. Therefore, because steady state is not achieved for 15 days and because the incidence of untoward effects may be influenced by the rate of dose escalation, treatment with a dose of 10 mg should not be contemplated until patients have been on a daily dose of 5 mg for 4 to 6 weeks. ARICEPT®/ARICEPT® ODT should be taken in the evening, just prior to retiring. ARICEPT®/ARICEPT® ODT can be taken with or without food. Allow ARICEPT® ODT tablet to dissolve on the tongue and follow with water.

Eisai Inc. Teaneck, NJ 07666  
Pfiizer Inc. New York, NY 10107  
ARICEPT® is a registered trademark of Eisai Co., Ltd.

200337 Revised February 2005