

**TENY M. JOHN, MD**

Assistant Professor, Infectious Disease, Infection Control and Employee Health, University of Texas MD Anderson Cancer Center, Houston, TX

**ALAN J. TAEGE, MD**

Department of Infectious Disease, Cleveland Clinic; Assistant Professor, Cleveland Clinic Lerner College of Medicine of Case Western Reserve University, Cleveland, OH

# Appropriate laboratory testing in Lyme disease

## ABSTRACT

Testing for Lyme disease is challenging and if done incorrectly can lead to unnecessary treatment. To interpret serologic test results, first assess the patient's pretest probability of infection based on the probability of exposure and clinical findings. Two-tiered testing remains the gold standard in diagnosing Lyme disease, although new guidelines may be published soon.

## KEY POINTS

Lyme disease, the most common tick-borne infection in North America, is a complex multisystem bacterial disease caused by *Borrelia burgdorferi*.

Lyme disease preferably affects the skin, joints, and nervous system and presents with typical and atypical features. Certain clinical features are diagnostic. Its diagnosis is mainly clinical and epidemiologic and, when doubtful, is supported by serologic testing.

Standard 2-tiered testing is the diagnostic testing method of choice—enzyme-linked immunoassay followed by Western blot. Interpretation of the bands depends on the duration of infection.

When interpreting the test results, be aware of false-positives and the reasons for them.

**L**YME DISEASE is a complex multisystem bacterial infection affecting the skin, joints, heart, and nervous system. The full spectrum of disease was first recognized and the disease was named in the 1970s during an outbreak of arthritis in children in the town of Lyme, Connecticut.<sup>1</sup>

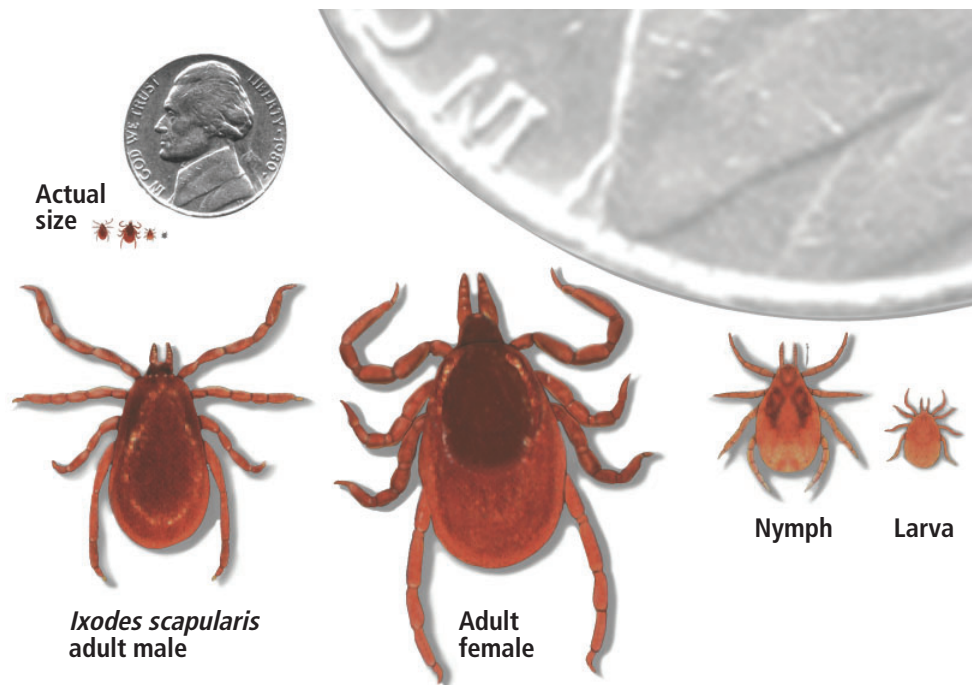
This review describes the epidemiology and pathogenesis of Lyme disease, the advantages and disadvantages of current diagnostic methods, and diagnostic algorithms.

## ■ THE MOST COMMON TICK-BORNE INFECTION IN NORTH AMERICA

Lyme disease is the most common tick-borne infection in North America.<sup>2,3</sup> In the United States, more than 30,000 cases are reported annually. In fact, in 2017, the number of cases was about 42,000, a 16% increase from the previous year, according to the US Centers for Disease Control and Prevention (CDC).

The infection is caused by *Borrelia burgdorferi*, a particularly arthritogenic spirochete transmitted by *Ixodes scapularis* (the black-legged deer tick, **Figure 1**) and *Ixodes pacificus* (the Western black-legged tick). Although the infection can occur at any time of the year, its peak incidence is in May to late September, coinciding with increased outdoor recreational activity in areas where ticks live.<sup>3,4</sup> The typical tick habitat consists of deciduous woodland with sufficient humidity provided by a good layer of decaying vegetation. However, people can contract Lyme disease in their own backyard.<sup>3</sup>

Most cases of Lyme disease are seen in the northeastern United States, mainly in suburban and rural areas.<sup>2,3</sup> Other areas affected include the midwestern states of Minnesota, Wisconsin, and Michigan, as well as northern



**Figure 1.** *Ixodes scapularis* is the vector of Lyme disease in the eastern United States. Infected nymphs account for most cases.

From Sigal LH. Myths and facts about Lyme disease. *Cleve Clin J Med* 1997; 64(4):203–209. doi:10.3949/ccjm.64.4.203

**A rash in the first few hours after tick contact is not erythema migrans**

California.<sup>4</sup> Fourteen states and the District of Columbia report a high average incidence (> 10 cases per 100,000 persons) (Table 1).<sup>2</sup>

**■ FIRST COMES IgM, THEN IgG**

The pathogenesis and the different stages of infection should inform laboratory testing in Lyme disease.

It is estimated that only 5% of infected ticks that bite people actually transmit their spirochetes to the human host.<sup>5</sup> However, once infected, the patient’s innate immune system mounts a response that results in the classic erythema migrans rash at the bite site. A rash develops in only about 85% of patients who are infected and can appear at any time between 3 and 30 days, but most commonly after 7 days. Hence, a rash occurring within the first few hours of tick contact is not erythema migrans and does not indicate infection, but rather an early reaction to tick salivary antigens.<sup>5</sup>

Antibody levels remain below the detection limits of currently available serologic tests in the first 7 days after exposure. Immunoglobulin M (IgM) antibody titers peak

between 8 and 14 days after tick contact, but IgM antibodies may never develop if the patient is started on early appropriate antimicrobial therapy.<sup>5</sup>

If the infection is not treated, the spirochete may disseminate through the blood from the bite site to different tissues.<sup>3</sup> Both cell-mediated and antibody-mediated immunity swing into action to kill the spirochetes at this stage. The IgM antibody response occurs in 1 to 2 weeks, followed by a robust IgG response in 2 to 4 weeks.<sup>6</sup>

Because IgM can also cross-react with antigens other than those associated with *B burgdorferi*, the IgM test is less specific than the IgG test for Lyme disease.

Once a patient is exposed and mounts an antibody-mediated response to the spirochete, the antibody profile may persist for months to years, even after successful antibiotic treatment and cure of the disease.<sup>5</sup>

Despite the immune system’s robust series of defenses, untreated *B burgdorferi* infection can persist, as the organism has a bag of tricks to evade destruction. It can decrease its expression of specific immunogenic surface-ex-

posed proteins, change its antigenic properties through recombination, and bind to the patient's extracellular matrix proteins to facilitate further dissemination.<sup>3</sup>

Certain host-genetic factors also play a role in the pathogenesis of Lyme disease, such as the *HLA-DR4* allele, which has been associated with antibiotic-refractory Lyme-related arthritis.<sup>3</sup>

### ■ LYME DISEASE EVOLVES THROUGH STAGES

Lyme disease evolves through stages broadly classified as early and late infection, with significant variability in its presentation.<sup>7</sup>

#### Early infection

Early disease is further subdivided into “localized” infection (stage 1), characterized by a single erythema migrans lesion and local lymphadenopathy, and “disseminated” infection (stage 2), associated with multiple erythema migrans lesions distant from the bite site, facial nerve palsy, radiculoneuritis, meningitis, carditis, or migratory arthritis or arthralgia.<sup>8</sup>

Highly specific physical findings include erythema migrans, cranial nerve palsy, high-grade or progressive conduction block, and recurrent migratory polyarthritis. Less specific symptoms and signs of Lyme disease include arthralgia, myalgia, neck stiffness, palpitations, and myocarditis.<sup>5</sup>

Erythema migrans lesions are evident in at least 85% of patients with early disease.<sup>9</sup> If they are not apparent on physical examination, they may be located at hidden sites and may be atypical in appearance or transient.<sup>5</sup>

If treatment is not started in the initial stage of the disease, 60% of infected patients may develop disseminated infection.<sup>5</sup> Progressive, untreated infection can manifest with Lyme arthritis and neuroborreliosis.<sup>7</sup>

Noncutaneous manifestations are less common now than in the past due to increased awareness of the disease and early initiation of treatment.<sup>10</sup>

#### Late infection

Manifestations of late (stage 3) infection include oligoarthritis (affecting any joint but often the knee) and neuroborreliosis. Clinical

TABLE 1

### US states with the highest average incidence of Lyme disease, 2015–2017

State	Confirmed cases per 100,000 persons
1 Maine	89.2
2 Vermont	86.7
3 Pennsylvania	66.7
4 Rhode Island	53.4
5 New Hampshire	51.9
6 Connecticut	41.8
7 New Jersey	40.5
8 Delaware	40.0
9 Wisconsin	26.6
10 Minnesota	23.4
11 Maryland	20.6
12 Massachusetts	16.6
13 New York	15.8
14 Virginia	12.3
15 Washington, DC	10.1

Data from reference 2.

**IgM reaches a peak in 1–2 weeks; IgG in 2–4 weeks**

signs and symptoms of Lyme disease may take months to resolve even after appropriate antimicrobial therapy is completed. This should not be interpreted as ongoing, persistent infection, but as related to host immune-mediated activity.<sup>5</sup>

### ■ INTERPRET LABORATORY RESULTS BASED ON PRETEST PROBABILITY

The usefulness of a laboratory test depends on the individual patient's pretest probability of infection, which in turn depends on the patient's epidemiologic risk of exposure and clinical features of Lyme disease. Patients with a high pretest probability—eg, a history of a tick bite followed by the classic erythema migrans rash—do not need testing and can start antimicrobial therapy right away.<sup>11</sup>

#### Serologic tests are the gold standard

Prompt diagnosis is important, as early Lyme disease is easily treatable without any future sequelae.<sup>11</sup>

TABLE 2

**Diagnostic testing methods in Lyme disease**

**Direct methods**

*Borrelia* culture  
Polymerase chain reaction

**Indirect methods**

Immunofluorescent assay  
Enzyme-linked immunosorbent assay  
Western blot

Tests for Lyme disease can be divided into direct methods, which detect the spirochete itself by culture or by polymerase chain reaction (PCR), and indirect methods, which detect antibodies (Table 2). Direct tests lack sensitivity for Lyme disease; hence, serologic tests remain the gold standard. Currently recommended is a standard 2-tier testing strategy using an enzyme-linked immunosorbent assay (ELISA) followed by Western blot for confirmation.

**■ DIRECT METHODS**

**Culture lacks sensitivity**

A number of factors limit the sensitivity of direct culture for diagnosing Lyme disease. *B burgdorferi* does not grow easily in culture, requiring special media, low temperatures, and long periods of incubation. Only a relatively few spirochetes are present in human tissues and body fluids to begin with, and bacterial counts are further reduced with duration and dissemination of infection.<sup>5</sup> All of these limit the possibility of detecting this organism.

**Polymerase chain reaction may help in some situations**

Molecular assays are not part of the standard evaluation and should be used only in conjunction with serologic testing.<sup>7</sup> These tests have high specificity but lack consistent sensitivity.

That said, PCR testing may be useful:

- In early infection, before antibody responses develop
- In reinfection, when serologic tests are not reliable because the antibodies persist for many years after an infection in many patients

- In endemic areas where serologic testing has high false-positive rates due to high baseline population seropositivity for anti-*Borrelia* antibodies caused by subclinical infection.<sup>3</sup>

PCR assays that target plasmid-borne genes encoding outer surface proteins A and C (*OspA* and *OspC*) and *VisE* (variable major protein-like sequence, expressed) are more sensitive than those that detect chromosomal 16s ribosomal ribonucleic acid (rRNA) genes, as plasmid-rich “blebs” are shed in larger concentrations than chromosomal DNA during active infection.<sup>7</sup> However, these plasmid-contained genes persist in body tissues and fluids even after the infection is cleared, and their detection may not necessarily correlate with ongoing disease.<sup>8</sup> Detection of chromosomal 16s rRNA genes is a better predictor of true organism viability.

The sensitivity of PCR for borrelial DNA depends on the type of sample. If a skin biopsy sample is taken of the leading edge of an erythema migrans lesion, the sensitivity is 69% and the specificity is 100%. In patients with Lyme arthritis, PCR of the synovial fluid has a sensitivity of up to 80%. However, the sensitivity of PCR of the cerebrospinal fluid of patients with neurologic manifestations of Lyme disease is only 19%.<sup>7</sup> PCR of other clinical samples, including blood and urine, is not recommended, as spirochetes are primarily confined to tissues, and very few are present in these body fluids.<sup>3,12</sup>

The disadvantage of PCR is that a positive result does not always mean active infection, as the DNA of the dead microbe persists for several months even after successful treatment.<sup>8</sup>

**■ INDIRECT METHODS**

**Enzyme-linked immunosorbent assay**

ELISAs detect anti-*Borrelia* antibodies. Early-generation ELISAs, still used in many laboratories, use whole-cell extracts of *B burgdorferi*. Examples are the Vidas Lyme screen (Biomérieux, biomerieux-usa.com) and the Wampole *B burgdorferi* IgG/M EIA II assay (Alere, www.alere.com). Newer ELISAs use recombinant proteins.<sup>13</sup>

**The antibody response to *B burgdorferi* takes at least 1 week to develop**

TABLE 3

### Causes of false-positive enzyme-linked immunosorbent assay testing for Lyme disease

#### Infections

Bacterial infection  
 Infective endocarditis  
 Other borrelial disease (eg, relapsing fever)  
 Other spirochetal infection (eg, syphilis, leptospirosis)

#### Viral infection

Epstein-Barr virus (polyclonal antibody production)

#### Parasitic infection

Malaria (polyclonal antibody production)

#### Noninfectious causes

Autoimmune conditions  
 Systemic lupus erythematosus  
 Rheumatoid arthritis

Three major targets for ELISA antibodies are flagellin (Fla), outer surface protein C (OspC), and VisE, especially the invariable region 6 (IR6). Among these, VisE-IR6 is the most conserved region in *B burgdorferi*.

Early-generation assays have a sensitivity of 89% and specificity of 72%.<sup>11</sup> However, the patient's serum may have antibodies that cross-react with unrelated bacterial antigens, leading to false-positive results (Table 3). Whole-cell sonicate assays are not recommended as an independent test and must be confirmed with Western blot testing when assay results are indeterminate or positive.<sup>11</sup>

Newer-generation ELISAs detect antibodies targeting recombinant proteins of VisE, especially a synthetic peptide C6, within IR6.<sup>13</sup> VisE-IR6 is the most conserved region of the *B burgdorferi* complex, and its detection is a highly specific finding, supporting the diagnosis of Lyme disease. Antibodies against VisE-IR6 antigen are the earliest to develop.<sup>5</sup> An example of a newer-generation serologic test is the VisE C6 Lyme EIA kit, approved as a first-tier test by the US Food and Drug Administration in 2001. This test has a specificity of 99%,<sup>14,15</sup> and its specificity is further increased when used in conjunction with Western blot (99.5%).<sup>15</sup> The advantage of the C6 antibody test is that it is more sensitive than 2-tier test-

TABLE 4

### Interpretation of the Western blot test in the diagnosis of Lyme disease

Antibody	Antigen (molecular mass)	Positive test
Immuno-globulin M	OspC (24 kDa) <sup>a</sup>	2 of 3 bands
	BmpA (39 kDa)	
	Fla (41 kDa)	
Immuno-globulin G	OspC (18, 21 kDa) <sup>b</sup>	5 of 10 bands
	BmpA (28, 30, 39 kDa)	
	Fla (41, 45, 58, 66, 93 kDa)	

<sup>a</sup>The apparent molecular mass of OspC depends on the strain of *Borrelia burgdorferi* being tested. The 24 and 21 kDa proteins are the same.

Based on information in reference 16.

ing during early infection (sensitivity 29%–74% vs 17%–40% in early localized infection, and 56%–90% vs 27%–78% in early disseminated infection).<sup>6</sup>

During early infection, older and newer ELISAs are less sensitive because of the limited number of antigens expressed at this stage.<sup>13</sup> All patients suspected of having early Lyme disease who are seronegative at initial testing should have follow-up testing to look for seroconversion.<sup>13</sup>

#### Western blot

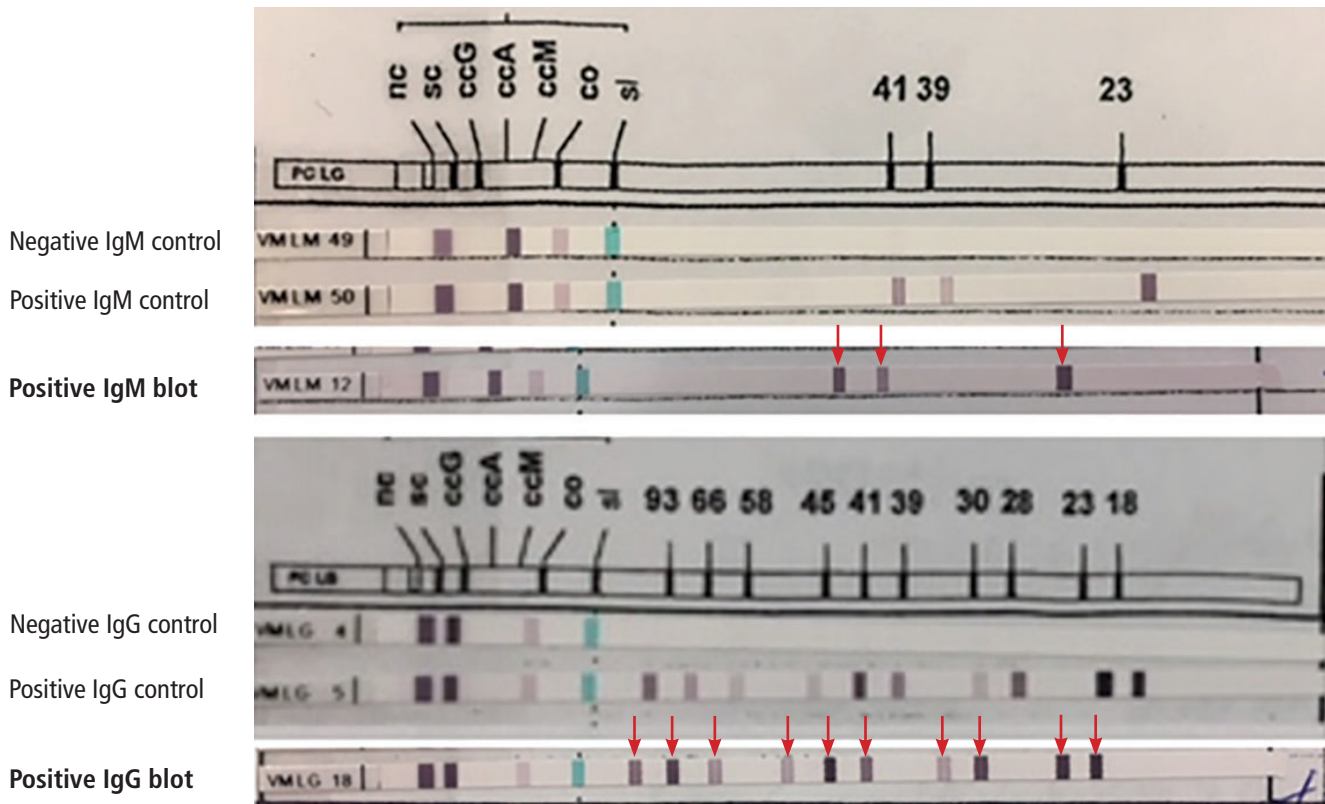
Western blot (immunoblot) testing identifies IgM and IgG antibodies against specific *B burgdorferi* antigens. It is considered positive if it detects at least 2 of a possible 3 specific IgM bands in the first 4 weeks of disease or at least 5 of 10 specific IgG bands after 4 weeks of disease (Table 4 and Figure 2).<sup>16</sup>

The nature of the bands indicates the duration of infection: Western blot bands against 23-kD OspC and 41-kD FlaB are seen in early localized infection, whereas bands against all 3 *B burgdorferi* proteins will be seen after several weeks of disease.<sup>17</sup> The IgM result should be interpreted carefully, as only 2 bands are required for the test to be positive, and IgM binds to antigen less specifically than IgG.<sup>12</sup>

#### Interpreting the IgM Western blot test: The '1-month rule'

If clinical symptoms and signs of Lyme disease have been present for more than 1 month,

**Background rates of seropositivity in endemic areas can reach 4%**



**Figure 2.** Positive Western blot test (*Borrelia* B31 ViraStripe [Viramed Diagnostics]) in a patient who presented with rash and arthritis. This test uses purified specific antigens of strain B31 of *Borrelia burgdorferi sensu stricto*. Note that the patient has 3 of 3 IgM bands and 10 of 10 IgG bands (arrows).

IgM reactivity alone should not be used to support the diagnosis, in view of the likelihood of a false-positive test result in this situation.<sup>18</sup> This is called the “1-month rule” in the diagnosis of Lyme disease.<sup>13</sup>

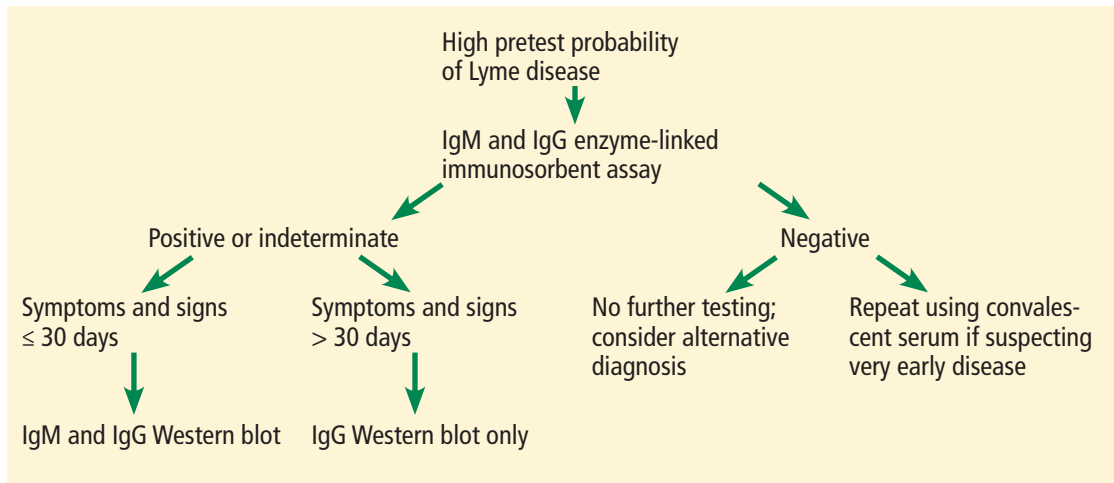
In early localized infection, Western blot is only half as sensitive as ELISA testing. Since the overall sensitivity of a 2-step algorithm is equal to that of its least sensitive component, 2-tiered testing is not useful in early disease.<sup>13</sup>

Although currently considered the most specific test for confirmation of Lyme disease, Western blot has limitations. It is technically and interpretively complex and is thus not universally available.<sup>13</sup> The blots are scored by visual examination, compromising the reproducibility of the test, although densitometric blot analysis techniques and automated scanning and scoring attempt to address some of these limitations.<sup>13</sup> Like the ELISA, Western blot can have false-positive results in healthy individuals without tick exposure, as nonspecific IgM immunoblots develop faint bands.

This is because of cross-reaction between *B burgdorferi* antigens and antigens from other microorganisms. Around 50% of healthy adults show low-level serum IgG reactivity against the FlaB antigen, leading to false-positive results as well. In cases in which the Western blot result is indeterminate, other etiologies must be considered.

False-positive IgM Western blots are a significant problem. In a 5-year retrospective study done at 63 US Air Force healthcare facilities, 113 (53.3%) of 212 IgM Western blots were falsely positive.<sup>19</sup> A false-positive test was defined as one that failed to meet seropositivity (a first-tier test omitted or negative, > 30 days of symptoms with negative IgG blot), lack of exposure including residing in areas without documented tick habitats, patients having atypical or no symptoms, and negative serology within 30 days of a positive test.

In a similar study done in a highly endemic area, 50 (27.5%) of 182 patients had a false-positive test.<sup>20</sup> Physicians need to be careful



**Figure 3.** Standard 2-tier testing for Lyme disease. Ig = immunoglobulin.

when interpreting IgM Western blots. It is always important to consider locale, epidemiology, and symptoms when interpreting the test.

### Limitations of serologic tests for Lyme disease

Currently available serologic tests have inherent limitations:

- Antibodies against *B burgdorferi* take at least 1 week to develop
- The background rate of seropositivity in endemic areas can be up to 4%, affecting the utility of a positive test result
- Serologic tests cannot be used as tests of cure because antibodies can persist for months to years even after appropriate antimicrobial therapy and cure of disease; thus, a positive serologic result could represent active infection or remote exposure<sup>21</sup>
- Antibodies can cross-react with related bacteria, including other borrelial or treponemal spirochetes
- False-positive serologic test results can also occur in association with other medical conditions such as polyclonal gammopathies and systemic lupus erythematosus.<sup>12</sup>

## RECOMMENDATIONS FOR TESTING

### Standard 2-tier testing

The CDC released recommendations for diagnosing Lyme disease after a second national conference of serologic diagnosis of Lyme disease in October 1994.<sup>18</sup> The 2-tiered testing method, involving a sensitive ELISA followed

by the Western blot to confirm positive and indeterminate ELISA results, was suggested as the gold standard for diagnosis (Figure 3). Of note, negative ELISA results do not require further testing.<sup>11</sup>

The sensitivity of 2-tiered testing depends on the stage of the disease. Unfortunately, this method has a wide range of sensitivity (17% to 78%) in stage 1 disease. In the same stage, the sensitivity increases from 14.1% in patients with a single erythema migrans lesion and early localized infection to 65.4% in those with multiple lesions. The algorithm has excellent sensitivity in late stage 3 infection (96% to 100%).<sup>5</sup>

### A 2-step ELISA algorithm

A 2-step ELISA algorithm (without the Western blot) that includes the whole-cell sonicate assay followed by the VisE C6 peptide assay actually showed higher sensitivity and comparable specificity compared with 2-tiered testing in early localized disease (sensitivity 61%–74% vs 29%–48%, respectively; specificity 99.5% for both methods).<sup>22</sup> This higher sensitivity was even more pronounced in early disseminated infection (sensitivity 100% vs 40%, respectively). By late infection, the sensitivities of both testing strategies reached 100%. Compared with the Western blot, the 2-step ELISA algorithm was simpler to execute in a reproducible fashion.<sup>5</sup>

The Infectious Diseases Society of America is revising its current guidelines, with an update expected late this year, which may

**Serologic tests cannot be used as a test of cure because antibodies can persist for months to years**

**TABLE 5**

**Recommended tests in different stages of infection**

Stage of illness	Clinical features	Primary testing recommended	Additional testing
<b>Stage 1</b>	<b>Early localized disease</b> ( $< 4$ weeks) Erythema migrans	No serologic testing	
<b>Stage 2</b>	<b>Early disseminated disease</b> Lymphocytic meningitis Facial palsy Radiculoneuropathy or carditis	Two-tiered testing  If initial test is negative, use acute and convalescent phase serology	
<b>Stage 3</b>	<b>Late Lyme disease</b> ( $> 4$ weeks)		
	Lyme arthritis	Two-tiered testing	Synovial fluid polymerase chain reaction (PCR) if no improvement after 2 months of oral antibiotics
	Lyme neuroborreliosis	Cerebrospinal fluid (CSF) antibodies and 2-tiered testing	CSF PCR or CSF culture

shift the recommendation from 2-tiered testing to the 2-step ELISA algorithm.

**Multiplex testing**

To overcome the intrinsic problems of protein-based assays, a multiplexed, array-based assay for the diagnosis of tick-borne infections called Tick-Borne Disease Serochip (TBD-Serochip) was established using recombinant antigens that identify key immunodominant epitopes.<sup>8</sup> More studies are needed to establish the validity and usefulness of these tests in clinical practice.

**Who should not be tested?**

The American College of Physicians<sup>6</sup> recommends against testing in patients:

- Presenting with nonspecific symptoms (eg, headache, myalgia, fatigue, arthralgia) without objective signs of Lyme disease
- With low pretest probability of infection based on epidemiologic exposures and clinical features
- Living in Lyme-endemic areas with no history of tick exposure<sup>6</sup>
- Presenting less than 1 week after tick exposure<sup>5</sup>
- Seeking a test of cure for treated Lyme disease.

**Antibodies can cross-react with other bacteria, causing false-positive results**

**DIAGNOSIS IN SPECIAL SITUATIONS**

**Early Lyme disease**

The classic erythema migrans lesion on physical examination of a patient with suspected Lyme disease is diagnostic and does not require laboratory confirmation.<sup>10</sup>

In ambiguous cases, 2-tiered testing of a serum sample during the acute presentation and again 4 to 6 weeks later can be useful. In patients who remain seronegative on paired serum samples despite symptoms lasting longer than 6 weeks and no antibiotic treatment in the interim, the diagnosis of Lyme disease is unlikely, and another diagnosis should be sought.<sup>3</sup>

Antimicrobial therapy may block the serologic response; hence, negative serologic testing in patients started on empiric antibiotics should not rule out Lyme disease.<sup>6</sup>

PCR or bacterial culture testing is not recommended in the evaluation of suspected early Lyme disease.

**Central nervous system Lyme disease**

Central nervous system Lyme disease is diagnosed by 2-tiered testing using peripheral blood samples because all patients with this infectious manifestation should have mounted an adequate IgG response in the blood.<sup>11</sup>



B cells migrate to and proliferate inside the central nervous system, leading to intrathecal production of anti-*Borrelia* antibodies. An index of cerebrospinal fluid to serum antibody greater than 1 is thus also indicative of neuroborreliosis.<sup>12</sup> Thus, performing lumbar puncture to detect intrathecal production of antibodies may support the diagnosis of central nervous system Lyme disease; however, it is not necessary.<sup>11</sup>

Antibodies persist in the central nervous system for many years after appropriate antimicrobial treatment.

### Lyme arthritis

Articular involvement in Lyme disease is characterized by a robust humoral response

such that a negative IgG serologic test virtually rules out Lyme arthritis.<sup>23</sup> PCR testing of synovial fluid for borrelial DNA has a sensitivity of 80% but may become falsely negative after 1 to 2 months of antibiotic treatment.<sup>24,25</sup> In an algorithm suggested by Puius et al,<sup>23</sup> PCR testing of synovial fluid should be done in patients who have minimal to no response after 2 months of appropriate oral antimicrobial therapy to determine whether intravenous antibiotics are merited.

**Table 5** summarizes the tests of choice in different clinical stages of infection. ■

**ACKNOWLEDGMENT:** The authors would like to acknowledge Anita Modi, MD, and Ceena N. Jacob, MD, for reviewing the manuscript and providing valuable suggestions, and Belinda Yen-Lieberman, PhD, for contributing pictures of the Western blot test results.

### REFERENCES

1. Steere AC, Malawista SE, Snyderman DR, et al. Lyme arthritis: an epidemic of oligoarticular arthritis in children and adults in three Connecticut communities. *Arthritis Rheum* 1977; 20(1):7–17. doi:10.1002/art.1780200102
2. Centers for Disease Control and Prevention (CDC). Lyme disease: recent surveillance data. <https://www.cdc.gov/lyme/datasurveillance/recent-surveillance-data.html>. Accessed August 12, 2019.
3. Stanek G, Wormser GP, Gray J, Strle F. Lyme borreliosis. *Lancet* 2012; 379(9814):461–473. doi:10.1016/S0140-6736(11)60103-7
4. Arvikar SL, Steere AC. Diagnosis and treatment of Lyme arthritis. *Infect Dis Clin North Am* 2015; 29(2):269–280. doi:10.1016/j.idc.2015.02.004
5. Schriefer ME. Lyme disease diagnosis: serology. *Clin Lab Med* 2015; 35(4):797–814. doi:10.1016/j.cll.2015.08.001
6. Hu LT. Lyme disease. *Ann Intern Med* 2016; 164(9):ITC65–ITC80. doi:10.7326/AITC201605030
7. Alby K, Capraro GA. Alternatives to serologic testing for diagnosis of Lyme disease. *Clin Lab Med* 2015; 35(4):815–825. doi:10.1016/j.cll.2015.07.005
8. Dumler JS. Molecular diagnosis of Lyme disease: review and meta-analysis. *Mol Diagn* 2001; 6(1):1–11. doi:10.1054/modi.2001.21898
9. Wormser GP, McKenna D, Carlin J, et al. Brief communication: hematogenous dissemination in early Lyme disease. *Ann Intern Med* 2005; 142(9):751–755. doi:10.7326/0003-4819-142-9-200505030-00011
10. Wormser GP, Dattwyler RJ, Shapiro ED, et al. The clinical assessment, treatment, and prevention of Lyme disease, human granulocytic anaplasmosis, and babesiosis: clinical practice guidelines by the Infectious Diseases Society of America. *Clin Infect Dis* 2006; 43(9):1089–1134. doi:10.1086/508667
11. Guidelines for laboratory evaluation in the diagnosis of Lyme disease. American College of Physicians. *Ann Intern Med* 1997; 127(12):1106–1108. doi:10.7326/0003-4819-127-12-199712150-00010
12. Halperin JJ. Lyme disease: a multisystem infection that affects the nervous system. *Continuum (Minneapolis)* 2012; 18(6 Infectious Disease):1338–1350. doi:10.1212/01.CON.0000423850.24900.3a
13. Branda JA, Body BA, Boyle J, et al. Advances in serodiagnostic testing for Lyme disease are at hand. *Clin Infect Dis* 2018; 66(7):1133–1139. doi:10.1093/cid/cix943
14. Immunetics. Immunetics® C6 Lyme ELISA™ Kit. <http://www.oxfordimmunotec.com/international/wp-content/uploads/sites/3/CF-E601-096A-C6-Pkg-Insrt.pdf>. Accessed August 12, 2019.
15. Civelek M, Lusic AJ. Systems genetics approaches to understand complex traits. *Nat Rev Genet* 2014; 15(1):34–48. doi:10.1038/nrg3575
16. Centers for Disease Control and Prevention (CDC). Recommendations for test performance and interpretation from the Second National Conference on Serologic Diagnosis of Lyme Disease. *MMWR Morb Mortal Wkly Rep* 1995; 44(31):590–591. PMID:7623762
17. Steere AC, Mchugh G, Damle N, Sikand VK. Prospective study of serologic tests for Lyme disease. *Clin Infect Dis* 2008; 47(2):188–195. doi:10.1086/589242
18. Centers for Disease Control and Prevention. Recommendations for test performance and interpretation from the Second National Conference on Serologic Diagnosis of Lyme Disease. *JAMA* 1995; 274(12):937. PMID:7674514
19. Webber BJ, Burganowski RP, Colton L, Escobar JD, Pathak SR, Gambino-Shirley KJ. Lyme disease overdiagnosis in a large health-care system: a population-based, retrospective study. *Clin Microbiol Infect* 2019. doi:10.1016/j.cmi.2019.02.020. Epub ahead of print.
20. Seriburi V, Ndukwe N, Chang Z, Cox ME, Wormser GP. High frequency of false positive IgM immunoblots for *Borrelia burgdorferi* in clinical practice. *Clin Microbiol Infect* 2012; 18(12):1236–1240. doi:10.1111/j.1469-0691.2011.03749.x
21. Hilton E, DeVoti J, Benach JL, et al. Seroprevalence and seroconversion for tick-borne diseases in a high-risk population in the northeast United States. *Am J Med* 1999; 106(4):404–409. doi:10.1016/S0002-9343(99)00046-7
22. Branda JA, Linskey K, Kim YA, Steere AC, Ferraro MJ. Two-tiered antibody testing for Lyme disease with use of 2 enzyme immunoassays, a whole-cell sonicate enzyme immunoassay followed by a VlsE C6 peptide enzyme immunoassay. *Clin Infect Dis* 2011; 53(6):541–547. doi:10.1093/cid/cir464
23. Puius YA, Kalish RA. Lyme arthritis: pathogenesis, clinical presentation, and management. *Infect Dis Clin North Am* 2008; 22(2):289–300. doi:10.1016/j.idc.2007.12.014
24. Nocton JJ, Dressler F, Rutledge BJ, Rys PN, Persing DH, Steere AC. Detection of *Borrelia burgdorferi* DNA by polymerase chain reaction in synovial fluid from patients with Lyme arthritis. *N Engl J Med* 1994; 330(4):229–234. doi:10.1056/NEJM199401273300401
25. Liebling MR, Nishio MJ, Rodriguez A, Sigal LH, Jin T, Louie JS. The polymerase chain reaction for the detection of *Borrelia burgdorferi* in human body fluids. *Arthritis Rheum* 1993; 36(5):665–675. doi:10.1002/art.1780360514

**ADDRESS:** Alan J. Taega, MD, Department of Infectious Disease, G21, Cleveland Clinic, 9500 Euclid Avenue, Cleveland, OH; taega@ccf.org