

Penicillin allergy: A practical guide for clinicians

ABSTRACT

Penicillin allergy is the most commonly reported drug allergy in the United States. However, after undergoing a complete evaluation by a board-certified allergist, including skin testing, 90% of patients labeled as “penicillin-allergic” are able to tolerate penicillin. Clinical presentation is key in classifying reactions as either mediated by or not mediated by immunoglobulin E (IgE), and in determining which patients may benefit from penicillin skin testing, graded-dose challenge, or desensitization. Cross-reactivity between penicillin and other beta-lactams is less common than previously thought.

KEY POINTS

The prevalence of reported penicillin allergy is 10% in the general population. However, more than 90% of these patients are found not to be allergic to penicillin after skin testing.

In patients found to have penicillin allergy, the frequency of positive results on skin testing decreases by 10% per year of avoidance. Therefore, 80% to 100% of patients are expected to test negative for penicillin allergy by 10 years after their reaction.

Skin testing for penicillin allergy is only useful for type 1 IgE-mediated reactions. However, in properly selected patients, the negative predictive value of penicillin skin testing is nearly 97%.

The rate of cross-reactivity between penicillin and cephalosporins is approximately 3%.

MOST PATIENTS who report that they are allergic to penicillin can ultimately receive penicillin or a penicillin-type antibiotic again after an appropriate evaluation and, possibly, treatment. This course of action decreases the need for broad-spectrum antibiotics,¹⁻⁴ reduces health care costs, and prevents the development of multidrug-resistant pathogens.⁵

About 10% of the general population say that they are allergic to penicillin.^{1,6,7} Although the prevalence of life-threatening anaphylactic reactions to penicillin has been estimated to be between 0.02% and 0.04%,⁶ the most common reaction is a cutaneous eruption. Since anaphylactic reactions are mediated by immunoglobulin E (IgE), evaluation of patients with a history of penicillin allergy by penicillin skin testing is recommended to rule out IgE-mediated reactions.

This review outlines a practical approach to evaluating a suspected IgE-mediated reaction to penicillin, with key points in the history and diagnostic testing. We also review subsequent management and cross-reactivity with other beta-lactam-containing antibiotics.

EVALUATING ALLERGIC PATIENTS

Evaluation of patients with a history of penicillin allergy can be improved with an understanding of the classification of drug reactions, risk factors for allergy, and the pathophysiology of penicillin allergy.

Classification of drug reactions

Adverse drug reactions include all unintended pharmacologic effects of a drug and can be classified as predictable (type A) or unpredictable (type B). Predictable reactions are dose-dependent, are related to the known pharma-

TABLE 1

Gell and Coombs classification of hypersensitivity reactions

Type of reaction	Hypersensitivity	Mediated by	Time of onset	Examples
IgE-mediated	Type I	IgE antibodies	Within 1 hour	Anaphylaxis
Non-IgE-mediated	Type II	Cytotoxic	Hours to days	Hemolytic anemia
Non-IgE-mediated	Type III	Immune complex	7–21 days	Serum sickness
Non-IgE-mediated	Type IV	Cell-mediated	Days to weeks	Maculopapular rash Stevens-Johnson syndrome Toxic epidermal necrolysis

IgE = immunoglobulin E

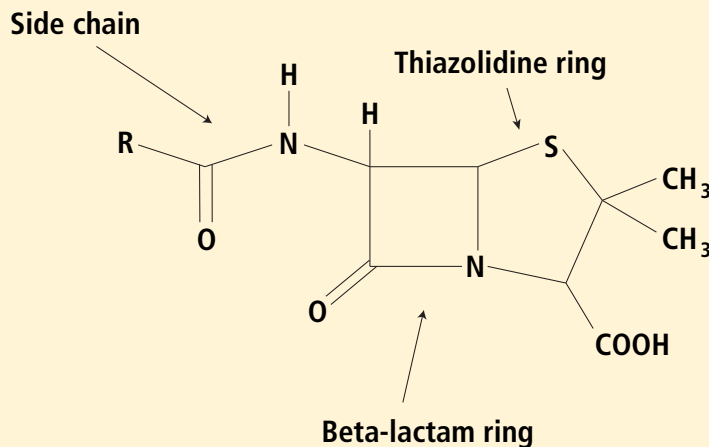


FIGURE 1. In a penicillin molecule, metabolites of the core ring structure, ie, the beta-lactam ring and the thiazolidine ring, can trigger immediate immunoglobulin E-mediated reactions. Reactions to the side chain may be responsible for cross-reactivity with other antibiotics.

colgic actions of the medication, and occur in otherwise healthy individuals. Unpredictable reactions are further classified into drug intolerance, drug idiosyncrasy, drug allergy, and pseudoallergic reactions.^{8,9}

Penicillin allergy can manifest as any hypersensitivity reaction of the Gell and Coombs classification (TABLE 1).⁹ Type I (immediate) and type IV (delayed) reactions are the most common types of reactions that occur with antibiotics and should be classified based on the onset of symptoms as immediate (within 1 hour) or delayed (days or weeks).⁸

Risk factors for IgE-mediated reaction

Risk factors for a hypersensitivity reaction include frequent or repetitive courses of penicillin¹⁰ and high-dose parenteral (rather than oral) administration.

Age and atopy are not risk factors for penicillin allergy.⁷ However, atopy increases the risk of a more severe anaphylactic reaction to penicillin, and anaphylactic reactions are most commonly reported between the ages of 20 and 49.⁶

Pathophysiology of penicillin allergy

All penicillins share a common core ring structure (beta-lactam and thiazolidine rings) but differ in their side chains (R group) (FIGURE 1).

Under physiologic conditions, the core ring structure is metabolized into major (penicilloyl) and minor (penicillin itself, penicilloate and penilloate) antigenic determinants that may trigger an immediate IgE-dependent response.⁹ In the United States, commercial forms of antigenic determinates for skin testing exist in the form of penicillin G (minor determinant) and penicilloyl-polylysine, better known as Prepen (major determinant).

Immediate-type reactions to similar antibiotics such as aminopenicillins and cephalosporins may be caused by IgE antibodies against the R-group side chain rather than the core penicillin major and minor determinants.¹¹

Questions to ask patients who have a history of penicillin allergy

Patients should be questioned closely about previous and current reactions to penicillin

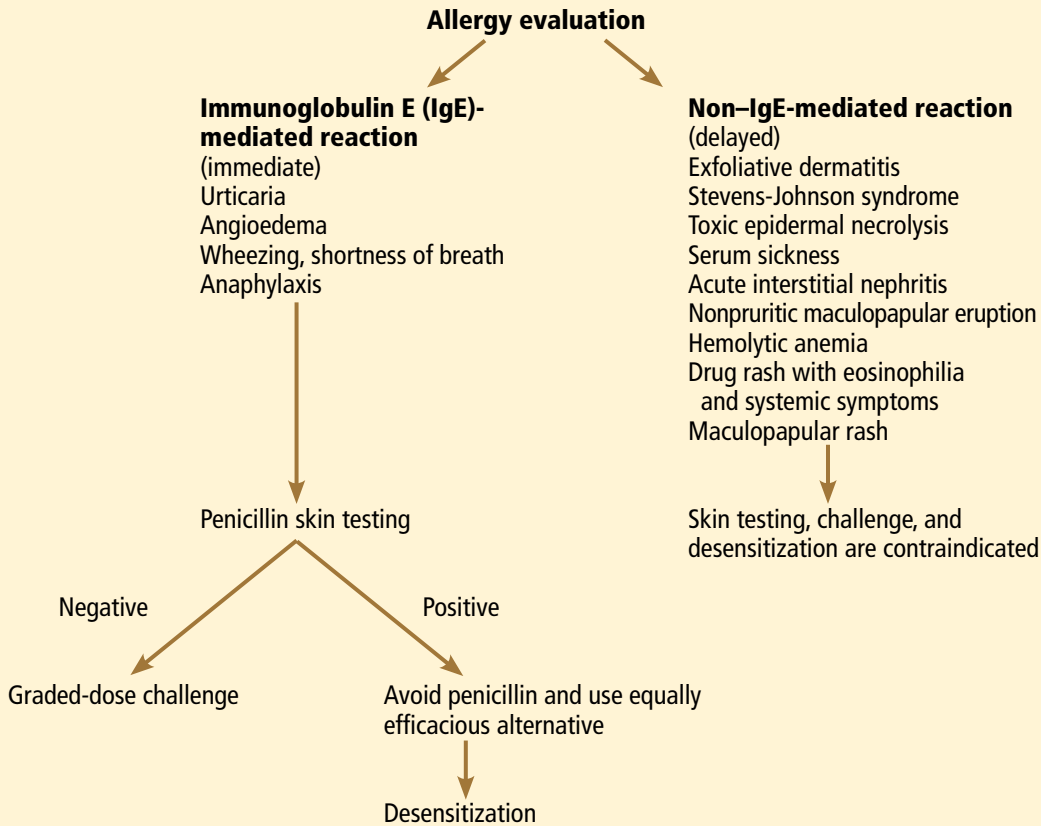


FIGURE 2. Clinical decision algorithm for penicillin allergy

Ask about previous and current reactions to penicillin

and should undergo skin-prick and intradermal testing, followed by graded-dose challenge or drug tolerance desensitization (FIGURE 2).

Questions to ask patients who have a history of penicillin allergy (TABLE 2)^{9,12} include the following:

Do you remember the details of the reaction? These include the route of administration, the time between the dose of penicillin and the appearance of symptoms, and how the reaction was managed.

Immediate reactions (ie, IgE-mediated, or Gell and Coombs type I) usually occur within the first hour after the first dose of the antibiotic, although they occasionally take up to 2 hours to occur, especially if the medication is taken orally and is taken with food. Symptoms consistent with IgE-mediated reactions include urticaria (most common), pruritus, angioedema, laryngeal edema, wheezing, shortness of breath, presyncope or

syncope, hypotension, and cardiorespiratory collapse.

In contrast, symptoms of a non-IgE-mediated reaction are delayed in onset, occurring after days of treatment. They include nonpruritic maculopapular eruptions, hemolytic anemia, serum sickness, Stevens-Johnson syndrome, drug rash with eosinophilia and systemic symptoms, acute interstitial nephritis, and toxic epidermal necrolysis.⁹

If the patient has had severe non-IgE-mediated reactions to penicillin (eg, Stevens-Johnson syndrome, toxic epidermal necrolysis, acute interstitial nephritis, hemolytic anemia, or serum sickness) in the past, skin testing, graded-dose challenge, and desensitization are contraindicated.

How many years ago did the reaction occur? Most patients lose their sensitivity to penicillin over time.^{7,13–15} Nearly 50% of patients with IgE-mediated penicillin allergy lose their

TABLE 2

Questions to ask patients who have a history of penicillin allergy

- Do you remember the details of the reaction?
- How many years ago did the reaction occur?
- How was the reaction managed? What was the outcome?
- Why were you given penicillin?
- Have you tolerated other forms of penicillin since the reaction?

The skin-prick test is the only validated test for IgE-mediated reactions to penicillin

sensitivity within 5 years of the reaction,¹⁵ increasing to 80% or more by 10 years.¹³

How was the reaction managed? What was the outcome? Use of and positive response to epinephrine and histamine 1 receptor antagonists (antihistamines) with resolution or significant improvement of symptoms within a few hours may indicate an IgE-mediated reaction.

What was the indication for penicillin? Many cutaneous reactions are a result of an underlying viral or bacterial infection. For example, up to 90% of patients with Epstein-Barr virus infection develop a maculopapular rash when given penicillin.¹⁶

Have you tolerated other forms of penicillin since the reaction? Sometimes the patient has already tolerated other beta-lactams such as aminopenicillins, cephalosporins, and semisynthetic penicillins (piperacillin-tazobactam). Patients who tolerate other beta-lactams without adverse reactions are not allergic to beta-lactams.

Diagnostic tests

Skin testing. The only validated test for diagnosing IgE-mediated reactions caused by penicillin is the immediate hypersensitivity skin test,⁹ which should be performed by a board-certified allergist. The test consists of skin-prick and intradermal testing with the major determinant (penicilloyl-polylysine), the minor determinant (penicillin G), a negative control (normal saline), and a positive control (histamine). Minor-determinant mix is not commercially available in the United States.

Results of skin-prick testing are read 15 minutes after application. A positive response is a wheal at least 3 mm larger in diameter (with equivalent erythema) than the negative control done simultaneously. Intradermal testing is only done after a negative skin-prick test. If the allergic reaction was severe (ie, anaphylaxis), skin testing should be done at least 4 to 6 weeks after the reaction.

A history of severe non-IgE-mediated reaction to penicillin is a contraindication to skin-prick testing for penicillin allergy. The positive predictive value of penicillin skin testing is 50%, and the negative predictive value is 97%.^{3,7,9,13}

Commercial in vitro testing (serum-specific IgE assays) for IgE-mediated hypersensitivity to penicillin is inferior to skin testing in terms of the negative predictive value and is not a suitable substitute for penicillin skin testing.

MANAGING PENICILLIN ALLERGY

If skin testing is positive, use another antibiotic, or refer for desensitization

If penicillin skin testing is positive (FIGURE 2), use another antibiotic that is equally efficacious. Patients who absolutely need a beta-lactam may undergo drug desensitization, performed by a board-certified allergist.

During desensitization, patients receive progressively higher doses of the drug every 15 to 20 minutes subcutaneously or intravenously, or every 20 to 30 minutes orally, until a full therapeutic dose is tolerated. Most protocols begin with a dose ranging from 1/10,000 to 1/1,000 of the final dose, depending on the severity of the allergic reaction.^{9,17}

Using modern protocols, the success rate for tolerance induction is extremely high (75% to 100% in patients with cystic fibrosis, a group with a high rate of drug allergy¹⁸⁻²⁰).

Drug desensitization is contraindicated in patients with non-IgE-mediated reactions.

If skin testing is negative, refer for graded-dose challenge

If skin testing is negative (FIGURE 2), graded-dose challenge is recommended. This procedure must be done by a board-certified allergist. If the original reaction was life-threatening, graded-dose challenge may entail giving 1/100

of the therapeutic dose. Then, if no reaction occurs during a brief observation period (usually 30 minutes), a full dose is given. However, many patients can start with 1/10 or even a full dose of the drug, especially if the original reaction was limited to the skin and the penicillin skin test is negative.

Graded-dose challenge is contraindicated if the original reaction was a severe non-IgE-mediated reaction.

■ UNDERSTANDING CROSS-REACTIVITY OF PENICILLIN

Penicillin is the only antibiotic for which skin testing is reliable and validated. If a drug that cross-reacts with penicillin is needed, it is important to know the rate of cross-reactivity (TABLE 3). The rate of cross-reactivity between penicillin and aminopenicillins (amoxicillin and ampicillin) is less than 1.3% in the United States.^{10,21} However, the cross-reactivity rate among aminopenicillins and cephalosporins is between 10% to 40%. For that reason, patients with prior reactions to aminopenicillins should avoid cephalosporins that share identical R-chain side groups with aminopenicillins.^{9,22}

The rate of cross-reactivity between penicillin and cephalosporins was reported as 10% 40 years ago.^{23,24} But this was with early, first-generation cephalosporins that may have been contaminated with penicillin. The cross-reactivity rate with cephalosporins today is 3%.²⁵ In general, first- and second-generation cephalosporins cause more allergic reactions than

TABLE 3

Cross-reactivity of penicillin with other beta-lactam antibiotics

Beta-lactam antibiotic	Cross-reactivity rate
Aminopenicillins	< 2%
Cephalosporins	3%
Monobactams ^a	0%
Carbapenems	< 1%

^aAvoid aztreonam if the patient has had a previous reaction to ceftazidime.

third- and fourth-generation cephalosporins.²⁶

Patients with a history of penicillin allergy who require a cephalosporin should still undergo penicillin skin testing. Skin testing with cephalosporins has not been validated. However, skin testing with nonirritating concentrations of cephalosporins⁹ may be done to elucidate IgE reactions.

In a study by Romano et al,²⁷ 110 patients who had positive results on penicillin skin testing completed graded-dose challenge with the carbapenem antibiotic imipenem. The rate of cross-reactivity between penicillin and imipenem was less than 1%.

Monobactam antibiotics do not cross-react with other beta-lactams, except ceftazidime with aztreonam. This is probably because of similarities in their chemical structure. ■

During desensitization, patients receive progressively higher doses up to a full therapeutic dose

■ REFERENCES

1. Park M, Markus P, Matesic D, Li JT. Safety and effectiveness of a preoperative allergy clinic in decreasing vancomycin use in patients with a history of penicillin allergy. *Ann Allergy Asthma Immunol* 2006; 97:681–687.
2. Arroliga ME, Radojicic C, Gordon SM, et al. A prospective observational study of the effect of penicillin skin testing on antibiotic use in the intensive care unit. *Infect Control Hosp Epidemiol* 2003; 24:347–350.
3. del Real GA, Rose ME, Ramirez-Atamoros MT, et al. Penicillin skin testing in patients with a history of beta-lactam allergy. *Ann Allergy Asthma Immunol* 2007; 98:355–359.
4. Nadarajah K, Green GR, Naglak M. Clinical outcomes of penicillin skin testing. *Ann Allergy Asthma Immunol* 2005; 95:541–545.
5. Harris AD, Sauberman L, Kabbash L, Greineder DK, Samore MH. Penicillin skin testing: a way to optimize antibiotic utilization. *Am J Med* 1999; 107:166–168.
6. Idsoe O, Guthe T, Willcox RR, de Weck AL. Nature and extent of penicillin side-reactions, with particular reference to fatalities from anaphylactic shock. *Bull World Health Organ* 1968; 38:159–188.
7. Gadde J, Spence M, Wheeler B, Adkinson NF Jr. Clinical experience with penicillin skin testing in a large inner-city STD clinic. *JAMA* 1993; 270:2456–2463.
8. Johansson SG, Bieber T, Dahl R, et al. Revised nomenclature for allergy for global use: report of the Nomenclature Review Committee of the World Allergy Organization, October 2003. *J Allergy Clin Immunol* 2004; 113:832–836.
9. Joint Task Force on Practice Parameters; American Academy of Allergy, Asthma and Immunology; American College of Allergy, Asthma and Immunology; Joint Council of Allergy, Asthma and Immunology. Drug allergy: an updated practice parameter. *Ann Allergy Asthma Immunol* 2010; 105:259–273.
10. Park MA, Matesic D, Markus PJ, Li JT. Female sex as a risk factor for penicillin allergy. *Ann Allergy Asthma Immunol* 2007; 99:54–58.
11. Moreno E, Macias E, Davila I, Laffond E, Ruiz A, Lorente F. Hypersensitivity reactions to cephalosporins. Expert

PENICILLIN ALLERGY

- Opin Drug Saf 2008; 7:295–304.
12. **Salkind AR, Cuddy PG, Foxworth JW.** The rational clinical examination. Is this patient allergic to penicillin? An evidence-based analysis of the likelihood of penicillin allergy. *JAMA* 2001; 285:2498–2505.
 13. **Sullivan TJ, Wedner HJ, Shatz GS, Yecies LD, Parker CW.** Skin testing to detect penicillin allergy. *J Allergy Clin Immunol* 1981; 68:171–180.
 14. **Macy E, Schatz M, Lin C, Poon KY.** The falling rate of positive penicillin skin tests from 1995 to 2007. *Perm J* 2009; 13:12–18.
 15. **Blanca M, Torres MJ, Garcia JJ, et al.** Natural evolution of skin test sensitivity in patients allergic to beta-lactam antibiotics. *J Allergy Clin Immunol* 1999; 103:918–924.
 16. **Patel BM.** Skin rash with infectious mononucleosis and ampicillin. *Pediatrics* 1967; 40:910–911.
 17. **Liu A, Fanning L, Chong H, et al.** Desensitization regimens for drug allergy: state of the art in the 21st century. *Clin Exp Allergy* 2011; 41:1679–1688.
 18. **Burrows JA, Toon M, Bell SC.** Antibiotic desensitization in adults with cystic fibrosis. *Respirology* 2003; 8:359–364.
 19. **Turvey SE, Cronin B, Arnold AD, Dioun AF.** Antibiotic desensitization for the allergic patient: 5 years of experience and practice. *Ann Allergy Asthma Immunol* 2004; 92:426–432.
 20. **Legere HJ 3rd, Palis RI, Rodriguez Bouza T, Uluer AZ, Castells MC.** A safe protocol for rapid desensitization in patients with cystic fibrosis and antibiotic hypersensitivity. *J Cyst Fibros* 2009; 8:418–424.
 21. **Lin E, Saxon A, Riedl M.** Penicillin allergy: value of including amoxicillin as a determinant in penicillin skin testing. *Int Arch Allergy Immunol* 2010; 152:313–318.
 22. **Dickson SD, Salazar KC.** Diagnosis and management of immediate hypersensitivity reactions to cephalosporins. *Clin Rev Allergy Immunol* 2013; 45:131–142.
 23. **Dash CH.** Penicillin allergy and the cephalosporins. *J Antimicrob Chemother* 1975; 1(suppl 3):107–118.
 24. **Petz LD.** Immunologic cross-reactivity between penicillins and cephalosporins: a review. *J Infect Dis* 1978; 137(suppl):S74–S79.
 25. **American Academy of Allergy Asthma & Immunology.** Cephalosporin administration to patients with a history of penicillin allergy. www.aaaai.org/Aaaaai/media/MediaLibrary/PDF%20Documents/Practice%20and%20Parameters/Cephalosporin-administration-2009.pdf. Accessed April 2, 2015.
 26. **Fonacier L, Hirschberg R, Gerson S.** Adverse drug reactions to cephalosporins in hospitalized patients with a history of penicillin allergy. *Allergy Asthma Proc* 2005; 26:135–141.
 27. **Romano A, Viola M, Gueant-Rodriguez RM, Gaeta F, Pettinato R, Gueant JL.** Imipenem in patients with immediate hypersensitivity to penicillins. *N Engl J Med* 2006; 354:2835–2837.

.....
ADDRESS: Alexei Gonzalez-Estrada, MD, Department of Allergy and Clinical Immunology, Respiratory Institute, A90, Cleveland Clinic, 9500 Euclid Avenue, Cleveland, OH 44195; e-mail: gonzala5@ccf.org

 **Cleveland Clinic**
Endocrinology and
Metabolism Institute

20th Annual

Diabetes Day

Diabetes Through the Ages

Friday, May 29, 2015

InterContinental Hotel and Bank of America
Conference Center
Cleveland, OH

Join Us at Diabetes Day

Diabetes Day: Diabetes Through the Ages is a CME-certified educational symposium presented by the Cleveland Clinic Department of Endocrinology, Diabetes and Metabolism and Center for Continuing Education to provide up-to-date reviews of advances in management strategies for patients with diabetes. Key topic areas include the pathobiology of diabetes complications, new oral agents, diabetes control, and current guideline recommendations.

This activity has been approved for
AMA PRA Category 1 Credits™.



Register Today!
ccfcme.org/AttendDiabetesDay