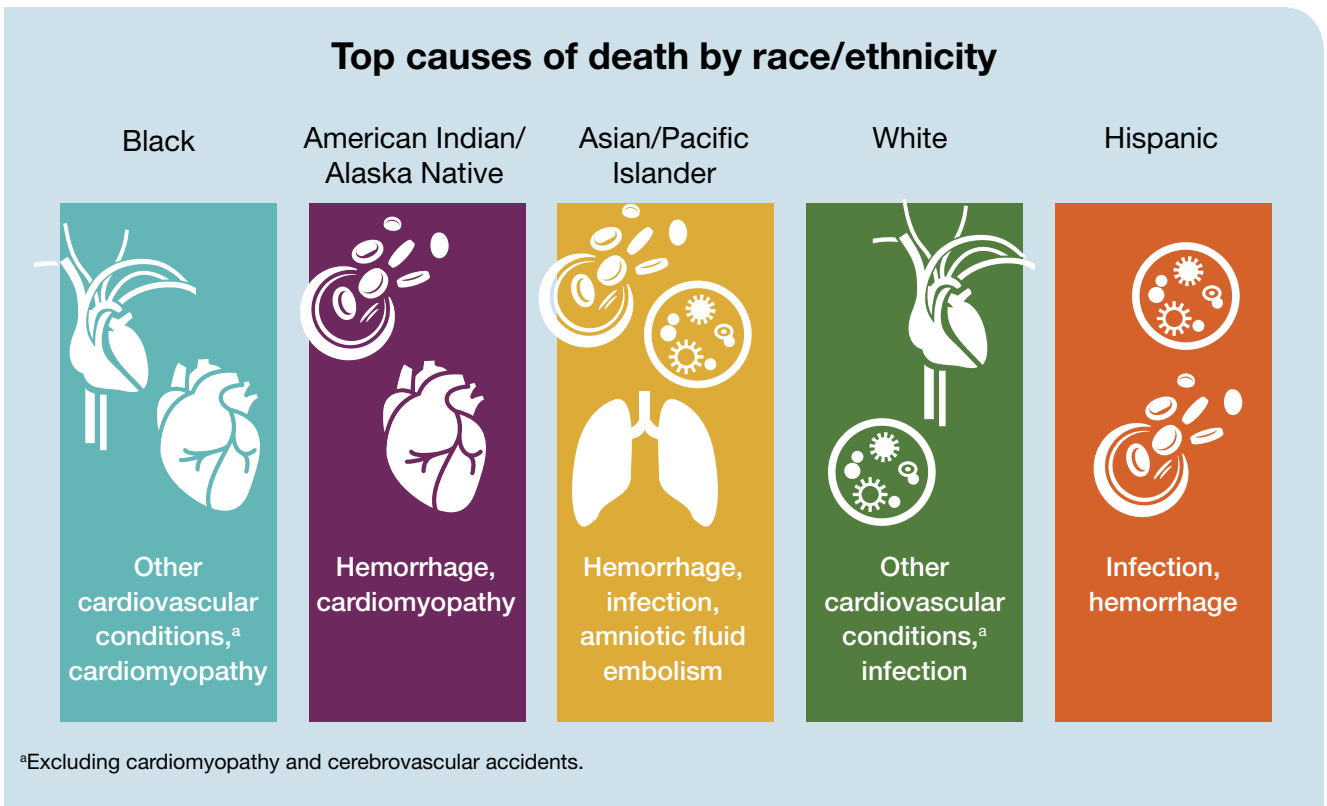
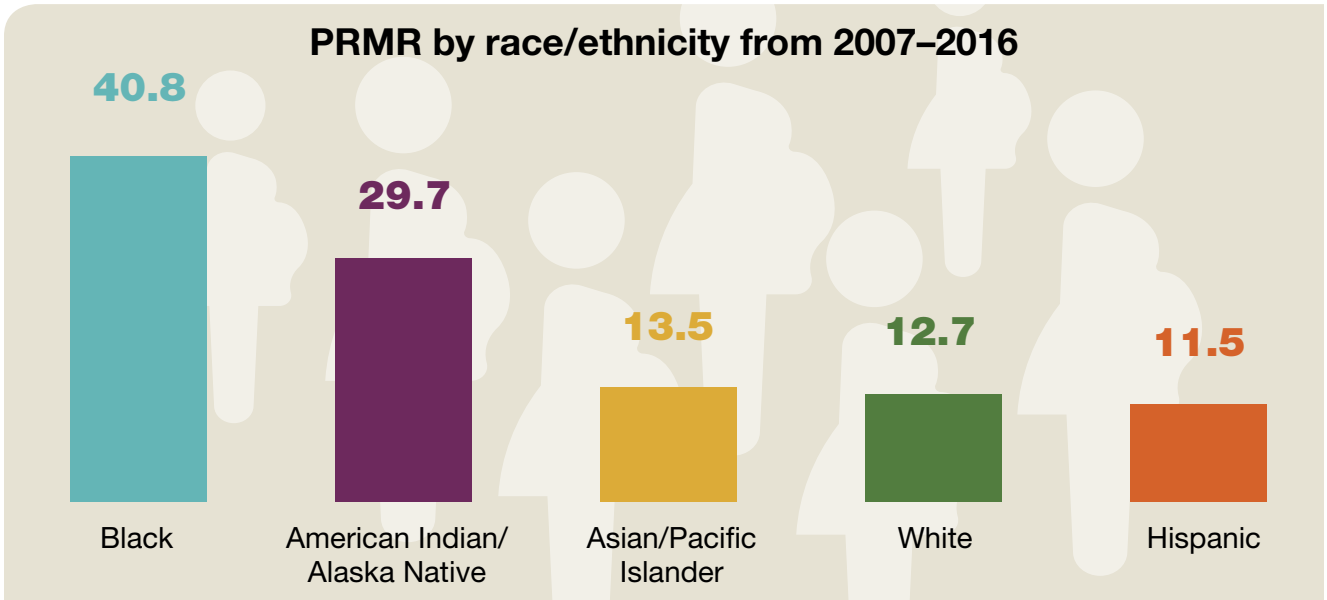


Racial disparities in pregnancy-related death

The pregnancy-related mortality ratio (PRMR)—the pregnancy-related deaths per 100,000 live births—increased from 15.0 in 2007 to 17.0 in 2016; it averaged 16.7 over that timeframe (a total of 6,765 deaths). Significant disparities in pregnancy-related deaths exist. The black:white disparity in PRMR is highest among those aged 30–34 years of age.



Source: Petersen EE, Davis NL, Goodman D, et al. Racial/ethnic disparities in pregnancy-related deaths—United States, 2007–2016. *MMWR Morb Mortal Wkly Rep.* 2019;68:762-765.