

## ORIGINAL RESEARCH

# Adjustment of Cerebrospinal Fluid Protein for Red Blood Cells in Neonates and Young Infants

Elizabeth M. Hines, BA<sup>1</sup>, Lise E. Nigrovic, MD, MPH<sup>2,3</sup>, Mark I. Neuman, MD, MPH<sup>2,3</sup>, Samir S. Shah, MD, MSCE<sup>4,5</sup>

<sup>1</sup>Division of Infectious Diseases, The Children's Hospital of Philadelphia, Philadelphia, Pennsylvania; <sup>2</sup>Division of Emergency Medicine, Children's Hospital Boston, Boston, Massachusetts; <sup>3</sup>Department of Pediatrics, Harvard Medical School, Boston, Massachusetts; <sup>4</sup>Divisions of Infectious Diseases and Hospital Medicine, Cincinnati Children's Hospital Medical Center, Cincinnati, Ohio; <sup>5</sup>Department of Pediatrics, University of Cincinnati College of Medicine, Cincinnati, Ohio.

**OBJECTIVE:** To determine the relationship between cerebrospinal fluid (CSF) red blood cell (RBC) count and CSF protein in neonates and young infants undergoing lumbar puncture.

**DESIGN:** Cross-sectional study.

**SETTING:** Urban tertiary care children's hospital.

**PATIENTS:** Infants 56 days of age and younger who had a lumbar puncture in the emergency department between January 1, 2005 and July 31, 2009 were eligible for inclusion. Infants with missing laboratory data, exceedingly high CSF red blood cell counts, or conditions known to elevate CSF protein were excluded.

**MEASUREMENTS:** Linear regression was used to determine the association between CSF RBC and CSF protein.

**RESULTS:** Of 1986 infants, 56 days of age or younger, who underwent lumbar puncture in the emergency department

during the study period, 1241 (62.5%) met inclusion criteria. The median age was 34 days (interquartile range: 19–46 days); 45% of patients were male. The median CSF RBC count was 40 cells/mm<sup>3</sup> (interquartile range: 2–1080 cells/mm<sup>3</sup>); 11.8% of patients had a CSF RBC >10,000 cells/mm<sup>3</sup>. CSF protein increased by 1.9 mg/dL (95% confidence interval: 1.7–2.1 mg/dL) per 1000 CSF RBCs for all included patients. Restricting analysis to patients without pleocytosis yielded comparable results, as did subanalyses by age and delivery type.

**CONCLUSIONS:** We found that CSF protein concentrations increased by approximately 2 mg/dL for every 1000 CSF RBCs. These data may assist clinicians in interpreting CSF protein concentrations in infants 56 days of age and younger in the context of traumatic lumbar punctures. *Journal of Hospital Medicine* 2012;7:325–328. © 2012 Society of Hospital Medicine

Traumatic lumbar puncture (LP) occurs when peripheral blood is introduced into the cerebrospinal fluid (CSF) as a result of needle trauma, which causes bleeding into the subarachnoid space. Traumatic LPs occur in up to 30% of LPs performed in children.<sup>1,2</sup> In addition to affecting the CSF white blood cell count, the presence of CSF red blood cells (RBCs) is associated with higher CSF protein concentrations due to the higher protein concentration in plasma compared with CSF and to the release of protein from lysed red blood cells. CSF protein concentration has been used in clinical decision rules for the prediction of bacterial meningitis in children.<sup>3</sup> Elevated protein levels are difficult to interpret in cases of traumatic LP, and a diagnosis of bacterial meningitis may be more difficult to exclude on the basis of CSF test results.<sup>4</sup>

The interpretation of CSF protein levels is further complicated in the youngest infants due to both the changing composition of the CSF as well as the higher rates of traumatic LPs.<sup>5</sup> Therefore, studies establishing a correction factor, adjusting observed CSF protein levels for the presence of CSF RBCs, that included predominantly older children may not be generalizable to neonates and young infants.<sup>6</sup> We sought to determine the relationship between CSF RBC count and CSF protein in infants ≤56 days of age who underwent LP in the emergency department (ED).

## METHODS

### Study Design, Setting, and Participants

This cross-sectional study was performed at The Children's Hospital of Philadelphia (Philadelphia, PA), an urban, tertiary care children's hospital. The Committees for the Protection of Human Subjects approved this study with a waiver of informed consent.

Infants 56 days of age and younger were eligible for inclusion if they had an LP performed as part of their ED evaluation between January 1, 2005 and July 31, 2009. At The Children's Hospital of Philadelphia, infants 56 days and younger routinely receive LPs for evaluation of fever.<sup>7–9</sup> Patients undergoing LP in the ED were identified using computerized order entry records as previously described.<sup>5,10</sup>

**\*Address for correspondence and reprint requests:** Samir S. Shah, MD, Division of Hospital Medicine, Cincinnati Children's Hospital Medical Center, 3333 Burnet Ave, ML 9016, Cincinnati, OH 45229; Telephone: 513-636-6222; Fax: 513-636-4402; E-mail: Samir.shah@cchmc.org

Additional Supporting Information may be found in the online version of this article.

**Received:** August 11, 2011; **Revised:** December 21, 2011; **Accepted:** January 8, 2011

2012 Society of Hospital Medicine DOI 10.1002/jhm.1920

Published online in Wiley Online Library (Wileyonlinelibrary.com).

We excluded patients with conditions known to elevate CSF protein, including: serious bacterial infection (bacterial meningitis, urinary tract infection, bacteremia, pneumonia, septic arthritis, and bacterial gastroenteritis),<sup>11</sup> presence of a ventricular shunt, aseptic meningitis (positive CSF enteroviral polymerase chain reaction or CSF herpes simplex virus polymerase chain reaction), congenital infections (eg, syphilis), seizure prior to presentation, and elevated bilirubin (if serum bilirubin was obtained). Due to the fact that grossly bloody CSF samples are difficult to interpret, we excluded those with a CSF RBC count  $>150,000$  cells/mm<sup>3</sup>, a cutoff representing the 99th percentile of CSF RBC values in the cohort after applying other exclusion criteria.

### Study Definitions

Bacterial meningitis was defined as either the isolation of a known bacterial pathogen from the CSF or, in patients who received antibiotics prior to evaluation, the combination of CSF pleocytosis and bacteria reported on CSF Gram stain. Bacteremia was defined as the isolation of a known bacterial pathogen from blood cultures excluding commensal skin flora. Urinary tract infection was defined as growth of a single known pathogen meeting 1 of 3 criteria: (1)  $\geq 1000$  colony-forming units per mL for urine cultures obtained by suprapubic aspiration, (2)  $\geq 50,000$  colony-forming units per mL from a catheterized specimen, or (3)  $\geq 10,000$  colony-forming units per mL from a catheterized specimen in association with a positive urinalysis.<sup>12-14</sup>

### Statistical Analysis

Data analysis was performed using STATA version 12 (Stata Corp, College Station, TX). Linear regression was used to determine the association between CSF RBC and CSF protein. We analyzed the following groups of children: 1) all eligible patients; 2) children  $\leq 28$  days versus children  $>28$  days; 3) vaginal versus cesarean delivery; and 4) patients without CSF pleocytosis. In the primary subanalysis, CSF pleocytosis was defined as CSF white blood cells (WBCs)  $>19$  cells/mm<sup>3</sup> for infants  $\leq 28$  days of age and CSF WBCs  $>9$  cells/mm<sup>3</sup> for infants  $\geq 29$  days of age, using reference values established by Kestenbaum et al.<sup>10</sup> Alternate definitions of CSF pleocytosis were also examined using reference values proposed by Byington et al<sup>15</sup> (age  $\leq 28$  days,  $>18$  cells/mm<sup>3</sup>; age  $>29$  days,  $>8.5$  cells/mm<sup>3</sup>) and Chadwick et al<sup>16</sup> (age 0-7 days,  $>26$  cells/mm<sup>3</sup>; age 8-28 days,  $>9$  cells/mm<sup>3</sup>; age 29-49 days,  $>8$  cells/mm<sup>3</sup>; and age 50-56 days,  $>7$  cells/mm<sup>3</sup>). We did not correct CSF WBCs for the RBC count because prior studies suggest that such correction factors do not provide any advantage over uncorrected values.<sup>17</sup> Finally, linear regression analysis was repeated while including subjects with  $>150,000$  RBC/mm<sup>3</sup> to determine the effect of including those patients on the association of CSF RBC count and protein con-

centrations. Subjects with grossly bloody CSF specimens, defined a priori as a CSF RBC  $>1,000,000$ /mm<sup>3</sup>, were excluded from this subanalysis.

### RESULTS

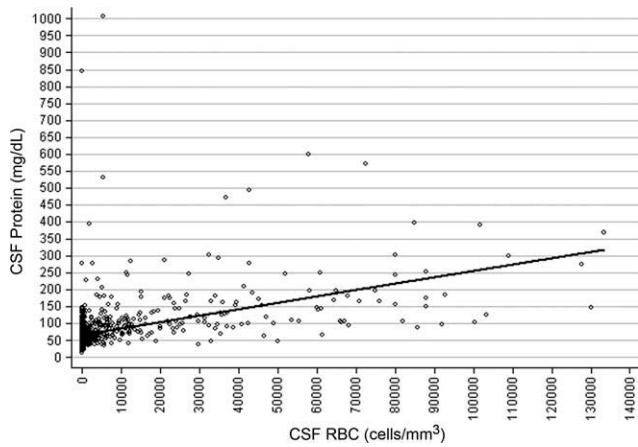
There were 1986 infants, 56 days of age or younger, who underwent LP in the ED during the study period. Patients were excluded for the following reasons: missing medical record number ( $n = 16$ ); missing CSF WBC, CSF RBC, or CSF protein values ( $n = 290$ ); conditions known to elevate CSF protein concentrations ( $n = 426$ , as follows: presence of a ventricular shunt device [ $n = 48$ ], serious bacterial infection [ $n = 149$ ], congenital infection [ $n = 2$ ], positive CSF polymerase chain reaction [PCR] test for either enterovirus or herpes simplex virus [ $n = 97$ ], seizure prior to presentation [ $n = 98$ ], or elevated serum bilirubin [ $n = 32$ ]). An additional 13 patients with a CSF RBC count  $>150,000$  cells/mm<sup>3</sup> were also excluded.

For the remaining 1241 study infants, the median age was 34 days (interquartile range: 19 days-46 days) and 554 patients (45%) were male. The median CSF RBC count was 40 cells/mm<sup>3</sup> (interquartile range: 2-1080 cells/mm<sup>3</sup>); 11.8% of patients had a CSF RBC count  $>10,000$  cells/mm<sup>3</sup>.

CSF protein increased linearly with increasing CSF RBCs (Figure 1). The increase in the CSF protein concentration of 1.9 mg/dL per 1000 CSF RBCs for all patients was similar between different age groups and delivery types (Table 1). Restricting analysis to those patients without pleocytosis also yielded comparable results; applying 2 other definitions of pleocytosis did not change the magnitude of the association (Table 1).

In a subanalysis, we then included subjects with a CSF RBC count  $>150,000$ /mm<sup>3</sup>; one extreme outlier with a CSF RBC equal to 3,160,000/mm<sup>3</sup> remained excluded. Inclusion of more traumatic samples lessened the overall correction factor. The CSF protein increased by 1.22 mg/dL (95% confidence interval: 1.14-1.29 mg/dL) per 1000 RBC/mm<sup>3</sup> increase in the CSF. In the subset without CSF pleocytosis, the CSF protein increased by 1.44 mg/dL (95% confidence interval: 1.33-1.57 mg/dL) per 1000 RBC/mm<sup>3</sup>.

Three children had high CSF protein values ( $>500$  mg/dL) despite the relative paucity of CSF RBCs. Two of these infants had respiratory syncytial virus bronchiolitis; neither infant had signs or symptoms of neurological illness. While details of the labor and delivery were not available, the CSF sample for one of these infants was reported to have xanthochromia, and the other infant was reported to have had a traumatic LP with a CSF sample that subsequently cleared. The third infant had fever without a specific source identified, but had a birth history of vaginal delivery and prolonged labor. The CSF sample from LP for this patient was reported as grossly bloody by the performing clinicians and by the Clinical Microbiology Laboratory, despite a CSF red blood cell count of only 5500 cells/mm<sup>3</sup>.



**FIG. 1.** Scatter plot of cerebrospinal fluid (CSF) red blood cell (RBC) (cells/mm<sup>3</sup>) versus CSF protein level (mg/dL; n = 1241).

## DISCUSSION

In a large cohort of infants  $\leq 56$  days of age, CSF protein increased by approximately 2 mg/dL for every 1000 cell/mm<sup>3</sup> increase in CSF RBCs. This correction factor is higher than previously reported correction factors from studies including older infants and children.<sup>6,18</sup> Some of this difference may be explained by the presence of old blood related to the trauma of labor and delivery. Previous work has demonstrated that the presence of xanthochromia, another RBC breakdown product, in the CSF of young infants was associated with maternal labor and elevated CSF protein.<sup>19</sup> Consistent with this hypothesis, the correction factor was nominally higher in those infants born by vaginal delivery compared with those born by cesarean section.

Several infants in our study had high CSF protein levels despite a paucity of CSF RBCs. By convention at our institution, the protein and glucose values are determined from the second tube, and the WBCs and RBCs are determined from the third tube. However, we could not determine the order in which the specimens for protein and RBCs were collected for individual specimens. Additionally, it is possible that delayed clearance of blood from a traumatic LP would cause the

CSF protein level to be high, as measured in the second tube, but lead to few RBCs in the third tube. These circumstances could explain the discrepancy between CSF protein and CSF RBCs counts for some patients.

The CSF protein adjustment factor for infants  $\leq 56$  days of age in our study was almost twice the correction of 1.1 mg/dL for every 1000 RBC increase reported by Nigrovic et al among infants  $\leq 90$  days of age.<sup>6</sup> There are differences in the design of the 2 studies. We excluded subjects with exceedingly large numbers of CSF RBCs and restricted inclusion to those 56 days of age or younger. When subjects with  $>150,000$  RBCs/mm<sup>3</sup> were included, the correction decreased to a value comparable to that reported by Nigrovic et al.<sup>6</sup> Therefore, it is possible that inclusion of subjects with grossly bloody specimens in prior studies skewed the association between CSF protein and CSF RBCs. The number of subjects in our cohort with  $>150,000$  CSF RBCs was too small to calculate a relevant correction factor for infants with exceedingly high CSF RBC counts.

The results of this study should be considered in the context of several limitations. Details regarding labor and delivery were not available. We suspect that old blood related to the trauma of birth provides partial explanation for the higher correction factor in neonates and young infants compared with older children. However, differences in CSF blood-brain barrier permeability may also contribute to these differences, independent of the CSF RBC count. Additionally, though the study population included a large number of neonates and young infants, a relatively small proportion of subjects had high CSF RBC counts. Therefore, our results may not be generalizable to those with exceedingly high CSF RBCs. Finally, available clinical prediction rules to identify patients with CSF pleocytosis, who are at very low risk for bacterial meningitis, include CSF protein as a predictor.<sup>3,20,21</sup> Although CSF protein in children with traumatic LPs may need adjustment prior to application of the clinical prediction rule, further study is needed before implementing this approach.

In conclusion, we found that CSF protein concentrations increased by approximately 2 mg/dL for every 1000 CSF RBCs. Correction of CSF protein for those with extremely high CSF RBCs may not be appropriate, as conventional linear models do not apply. These data may assist clinicians in interpreting CSF protein concentrations in infants 56 days of age and younger in the context of traumatic LPs.

Disclosure: Nothing to report.

**TABLE 1.** Association Between Cerebrospinal Fluid Protein and Red Blood Cell Count

Patient Group	No. of Patients	Change in CSF protein (mg/dL) per 1000 RBCs (95% CI)
All eligible	1241	1.9 (1.7-2.1)
No CSF pleocytosis*	1085	2.0 (1.7-2.4)
Age		
Age $\leq 28$ days	481	1.9 (1.5-2.3)
Age $>28$ days	760	1.9 (1.7-2.1)
Mode of delivery†		
Vaginal	741	1.9 (1.7-2.2)
Cesarean	366	1.7 (1.4-2.0)

Abbreviations: CI, confidence interval; CSF, cerebrospinal fluid; RBCs, red blood cells.

\*  $\beta$ -Coefficient for the subgroup without pleocytosis as defined by Byington et al<sup>15</sup> was 2.2 (95% CI: 1.9-2.5);  $\beta$ -coefficient for the subgroup without pleocytosis as defined by Chadwick et al<sup>16</sup> was 2.3 (95% CI: 2.0-2.7). † Data addressing mode of delivery was missing for 134 included patients.

## References

- Baxter AL, Fisher RG, Burke BL, Goldblatt SS, Isaacman DJ, Lawson ML. Local anesthetic and stylet styles: factors associated with resident lumbar puncture success. *Pediatrics*. 2006;117:876-881.
- Nigrovic LE, Kuppermann N, Neuman MI. Risk factors for traumatic or unsuccessful lumbar punctures in children. *Ann Emerg Med*. 2007;49:762-771.

3. Nigrovic LE, Kuppermann N, Macias CG, et al. Clinical prediction rule for identifying children with cerebrospinal fluid pleocytosis at very low risk of bacterial meningitis. *JAMA*. 2007;297:52–60.
4. Mazor SS, McNulty JE, Roosevelt GE. Interpretation of traumatic lumbar punctures: who can go home? *Pediatrics*. 2003;111:525–528.
5. Shah SS, Ebberson J, Kestenbaum LA, Hodinka RL, Zorc JJ. Age-specific reference values for cerebrospinal fluid protein concentration in neonates and young infants. *J Hosp Med*. 2011;6:22–27.
6. Nigrovic LE, Shah SS, Neuman MI. Correction of cerebrospinal fluid protein for the presence of red blood cells in children with a traumatic lumbar puncture. *J Pediatr*. 2011;159:158–159.
7. Baker MD, Avner JR, Bell LM. Failure of infant observation scales in detecting serious illness in febrile, 4- to 8-week-old infants. *Pediatrics*. 1990;85:1040–1043.
8. Baker MD, Bell LM. Unpredictability of serious bacterial illness in febrile infants from birth to 1 month of age. *Arch Pediatr Adolesc Med*. 1999;153:508–511.
9. Baker MD, Bell LM, Avner JR. Outpatient management without antibiotics of fever in selected infants. *N Engl J Med*. 1993;329:1437–1441.
10. Kestenbaum LA, Ebberson J, Zorc JJ, Hodinka RL, Shah SS. Defining cerebrospinal fluid white blood cell count reference values in neonates and young infants. *Pediatrics*. 2010;125:257–264.
11. Shah SS, Zorc JJ, Levine DA, Platt SL, Kuppermann N. Sterile cerebrospinal fluid pleocytosis in young infants with urinary tract infections. *J Pediatr*. 2008;153:290–292.
12. Zorc JJ, Levine DA, Platt SL, et al. Clinical and demographic factors associated with urinary tract infection in young febrile infants. *Pediatrics*. 2005;116:644–648.
13. Shaw KN, Gorelick M, McGowan KL, Yakscoe NM, Schwartz JS. Prevalence of urinary tract infection in febrile young children in the emergency department. *Pediatrics*. 1998;102:e16.
14. Hoberman A, Chao HP, Keller DM, Hickey R, Davis HW, Ellis D. Prevalence of urinary tract infection in febrile infants. *J Pediatr*. 1993;123:17–23.
15. Byington CL, Kendrick J, Sheng X. Normative cerebrospinal fluid profiles in febrile infants. *J Pediatr*. 2011;158:130–134.
16. Chadwick SL, Wilson JW, Levin JE, Martin JM. Cerebrospinal fluid characteristics of infants who present to the emergency department with fever: establishing normal values by week of age. *Pediatr Infect Dis J*. 2011;30:e63–e67.
17. Bonsu BK, Harper MB. Corrections for leukocytes and percent of neutrophils do not match observations in blood-contaminated cerebrospinal fluid and have no value over uncorrected cells for diagnosis. *Pediatr Infect Dis J*. 2006;25:8–11.
18. Bonadio WA, Smith DS, Goddard S, Burroughs J, Khaja G. Distinguishing cerebrospinal fluid abnormalities in children with bacterial meningitis and traumatic lumbar puncture. *J Infect Dis*. 1990;162:251–254.
19. Nigrovic LE, Trivedi M, Edlow JA, Neuman MI. Cerebrospinal fluid xanthochromia in newborns is related to maternal labor before delivery. *Pediatrics*. 2007;120:e1212–e1216.
20. Bonsu BK, Harper MB. Accuracy and test characteristics of ancillary tests of cerebrospinal fluid for predicting acute bacterial meningitis in children with low white blood cell counts in cerebrospinal fluid. *Acad Emerg Med*. 2005;12:303–309.
21. Bonsu BK, Ortega HW, Marcon MJ, Harper MB. A decision rule for predicting bacterial meningitis in children with cerebrospinal fluid pleocytosis when gram stain is negative or unavailable. *Acad Emerg Med*. 2008;15:437–444.